

Wi-Fi KIT USER MANUAL

NOTE:

Carrier will not be liable for any issues and problems caused by Internet, Wi-Fi Router and Smart mobile. Please contact the original provider to get further help.



**CA001U-APP(G3)
16122000A26161
20160216**

CONTENTS

1	DECLARATION OF CONFORMITY.....	1
2	SPECIFICATION.....	1
3	PRECAUTIONS	1
4	INSTALLATION.....	2
5	CONFIGURATION.....	4
6	APP OPERATION.	15

CAUTIONS

- This device complies with Part 15 of the FCC Rules and RSS 210 of Industry & Science Canada. Operation is subject to the following two conditions: (1) this device may not cause harmful interference, and (2) this device must accept any interference received, including interference that may cause undesired operation.
- Only operate the device in accordance with the instructions supplied. This device complies with FCC and IC radiation exposure limits set forth for an uncontrolled environment. In order to avoid the possibility of exceeding the FCC and IC radio frequency exposure limits, human proximity to the antenna shall not be less than 20cm (8 inches) during normal operation.
- Changes or modifications not expressly approved by the party responsible for compliance could void the user's authority to operate the equipment.

1 DECLARATION OF CONFORMITY

Hereby, we declare that this AC is in compliance with the essential requirements and other relevant provisions of Directive 1999/5/EC. The declaration of conformity may be consulted with sales agent.

2 SPECIFICATION

Model: OSK102

Standard: IEEE 802.11b/g/n

Antenna Type: External omnidirectional Antenna.

Frequency:Wi-Fi: 2.4G

Maximum Transmitted Power: 15dBm Max

Dimension:55x24x8(mm)

Operation Temperature:0°C~45°C/32°F~113°F.

Operation Humidity:10%~85%

Power Input: DC 5V/300mA

3 PRECAUTIONS

- Applicable system :iOS, Android.
(Suggest: iOS 7.0 or later Android 4.0 or later)
Please check the service website for more applicable devices.
- Disclaimer: Due to the special situation existed during App use, we explicitly claim as bellow:
Not all of the Android and iOS systems are compatible with the APP. We will not be responsible for any issue as a result of the incompatibility
- SMART KIT wireless safety strategy.
Smart kit only support WPA-PSK/WPA2-PSK encryption and none encryption .
WPA-PSK/WPA2-PSK encryption is recommended.

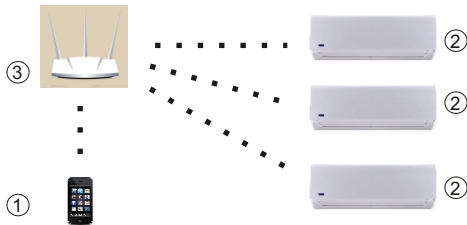
- Smart Phone camera needs to be 5 million pixels or above to make sure scan QR code well.
- Due to different network situation, sometimes, request time-out could be happened, thus, it is necessary to do network configuration again.
- Due to different network situation, sometimes, control process may return time out. If this situation occurs, do not feel confused, the display on board and APP may not be the same.

4 INSTALLATION

1. Internet work

Wi-Fi router, smart mobile, smart air conditioner are needed for this function.

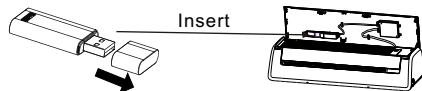
- 1) Smart Phone
- 2) Smart Air conditioner
- 3) Wi-Fi Router



2

2. Smart kit installation

- ① Remove the protective cap of the smart kit



- ② Open the front panel and insert the smart kit into the Wi-Fi adapter.
- ③ Attach the QR code packed with SMART KIT to the side panel of the machine, ensure it is convenient to be scanned by the mobile phone.



3. APP installation

- ① **Iphone:**

Scan QR Code or go to App Store and search for 'Carrier air conditioner' app and download it.

- ② **Android system:**

Scan QR Code or go to Google play, search for 'Carrier air conditioner' app and download it.



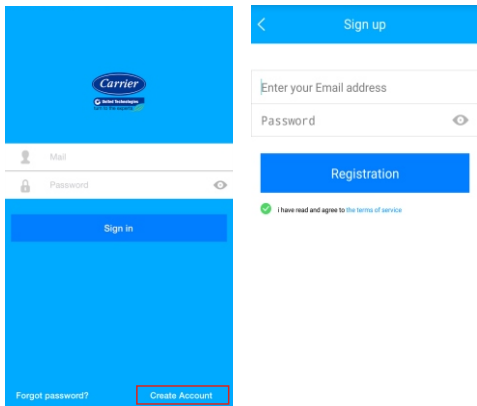
Carrier Air Conditioner
Century Carrier Residential Air-c...

3

5 CONFIGURATION

1. User Registration on APP

- Please ensure the mobile device has connected to Wi-Fi router. And the router has already connected to internet before registration and network configuration.



- ① Click "Create Account "
- ② Enter an available email address and create a password, then click Registration.
Note: The password is only for this APP, not for email system.

4

CAUTION:

- It is better to log in email box and active registration account by clicking link in case forget the password.
- Make sure the mobile connect to the Wi-Fi network.
- Make sure the mobile Wi-Fi function works well and can be connected to Wi-Fi network automatically.
- If the smart kit failed to connect to the router, please confirm the encryption setting of router should be WPA

2. Set Air conditioner into AP mode

- ① Turn on the air conditioner, press the 'LED' button on the remote controller for 7 times continuously.
- ② When the display show 'AP' and flash, it means that the smartkit has already entered the Wi-Fi network setting mode.



Kindly reminder:

- When the air conditioner entered into Wi-Fi network setting mode, the remote controller cannot control the AC before the Wi-Fi network setting finished.
- If there is no setting operation under Wi-Fi network setting mode, the air conditioner will quit this mode automatically 8 minutes later, then the user can control the AC with remote controller normally.

5

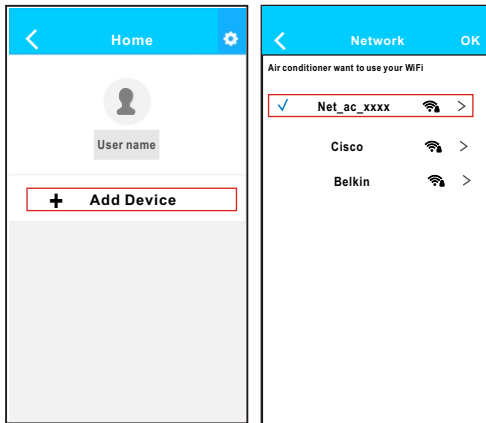
3. Add device to the account

Note: The configuration process is different for Android system and iOS system mobile.

First, open the APP, sign in with the registered account and password.

If the mobile is android system, please follow the process as below, if the mobile is Iphone, please go to page 8 and follow the process.

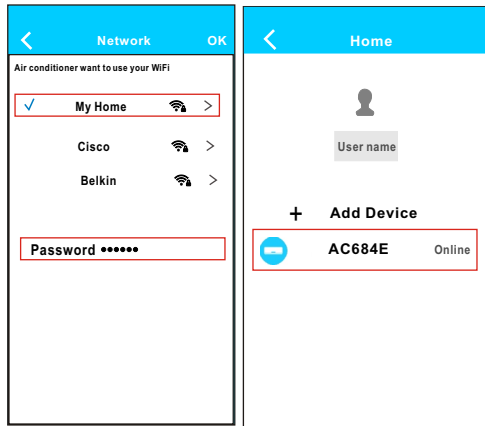
■ Network configuration for Android system mobile



① Press "+ Add Device"

② Select net_ac_xxxx and click OK.

6

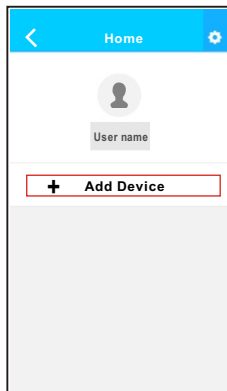


③ Select Wi-Fi network, for example MyHome, then enter the Wi-Fi password and click OK.

④ Configuration Success, then the device can be seen on the list.

7

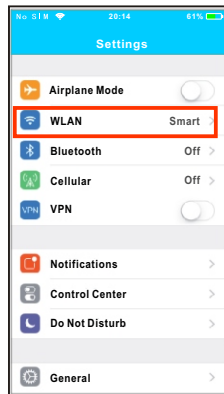
■ Network configuration for Iphone



① Press "+ Add Device "



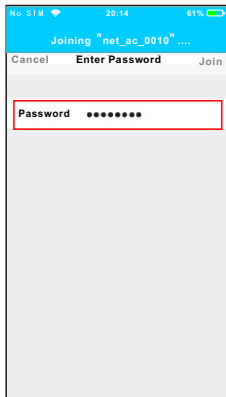
② Read the instruction above and press the "Home" button to return to the Iphone main interface.



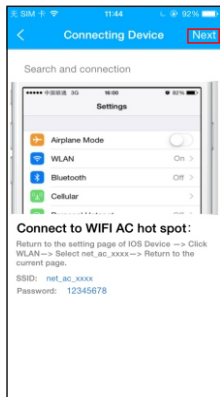
③ Click mobile settings to enter the setting page, select WLAN setting.



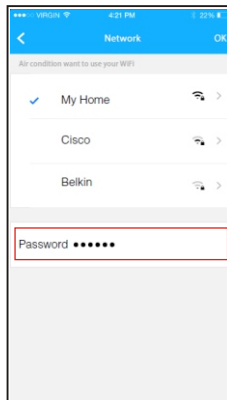
④ Choose net_ac_XXXX



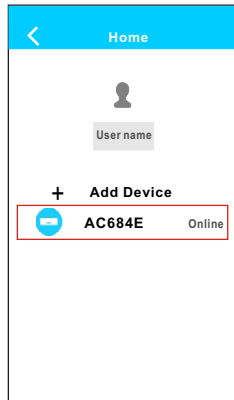
- ⑤ Type default password: 12345678 and click "Join "



- ⑥ Return to APP and click Next



- ⑦ Select Wi-Fi network, for example MyHome ,then enter the Wi-Fi password and click OK.



- ⑧ Configuration Success, the device can be seen on the list.

NOTE:

When finishing network configuration, APP will display success cue words on the screen.

Due to different Internet environment, it is possible that the device status still display "offline" and can not access to the operation interface.

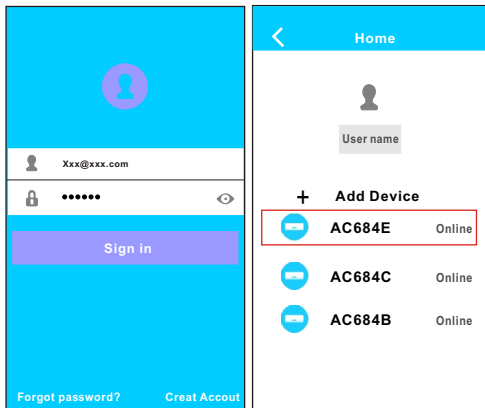
If this situation occurs, user should pull the device list down and refresh the status become "online",

If it does not work, turn off the AC turn on it again.

6 APP OPERATION

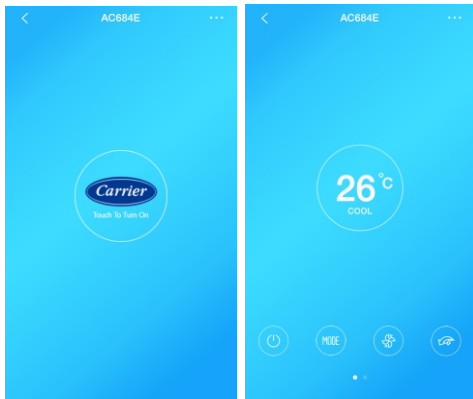
1. Sign in

Please ensure both mobile device and air conditioner are connected to the Internet before using app to control the air conditioner via internet, please follow the next steps:



① Enter user account and password, Click "Sign in "

② Select the target air conditioner to enter the main control interface.



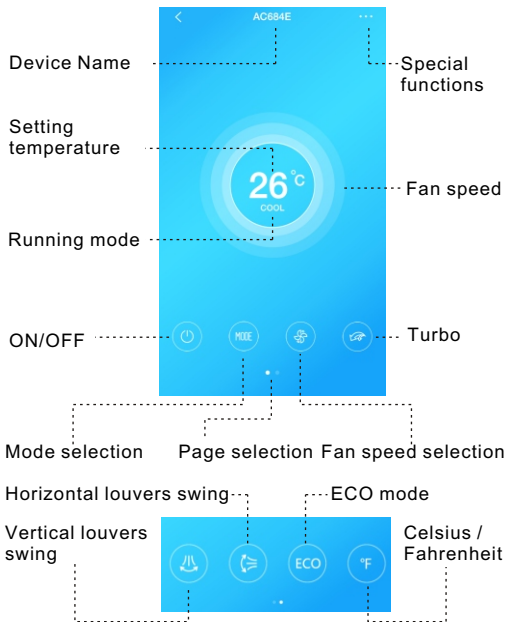
③ Touch the logo in the center to turn on the air conditioner.

④ Now, the air conditioner is available to be controlled by APP.

NOTE:

Not all the functions of the APP are available for every air conditioner. For example: ECO is only available for inverter model, vertical louver swing is only available for the models with vertical swing motor.

2. Main interface and functions



ON/OFF:

Press this button to turn on or turn off the unit.

Mode selection:

Press this button to change the running mode (COOL, HEAT, DRY, FAN, AUTO)

Fan speed selection:

Press this button to change the fan speed

High fan 3 layer aura

Med fan 2 layer aura

Low fan 1 layer aura

Turbo: *

Press this button to active turbo mode.

(Only available for cool running)

Vertical louvers swing: *

Press this button to active the vertical louvers swing.

Horizontal louvers swing:

Press this button to active the horizontal louvers swing.

ECO: *

Press this button to active ECO mode.

Celsius / Fahrenheit:

Press this button to change the temperature unit showing on the AC display.

Setting temperature:

Touch the screen near the temperature, slip up & down to change the temperature, do not loosen finger until the number reach to target.

* Model dependent

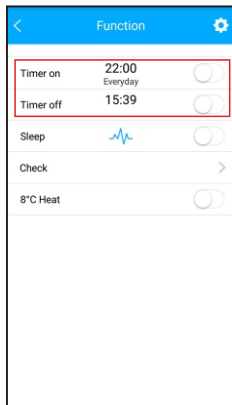
3. SPECIAL FUNCTIONS

Including: Timer on, Timer off, 8°C Heat, Sleep, Check.

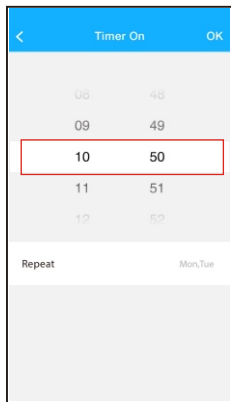
NOTE: The smart kit will check the software program in the air conditioner control parts, only show the available functions on the APP.

■ Timer on/ Timer off

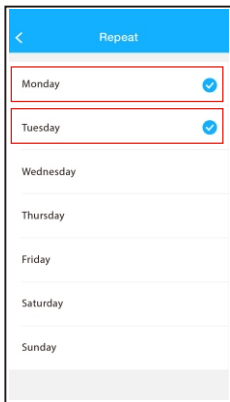
Weekly, user can make an appointment to turn on or turn off the AC on specific time. User can choose circulation to keep the AC under schedule control every week.



① Choose Timer on or Timer off



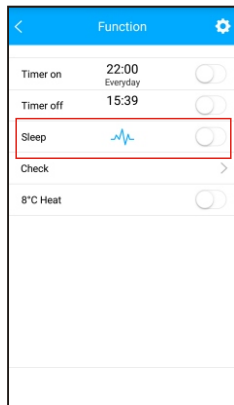
② Choose the setting time to turn on or turn off the air conditioner.



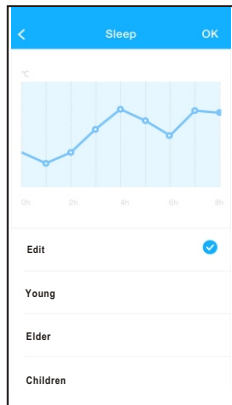
③ Choose the date, then confirm with "OK".

■ Sleep

This function can customize comfortable sleep by setting target temperature.



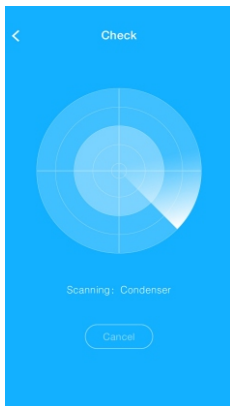
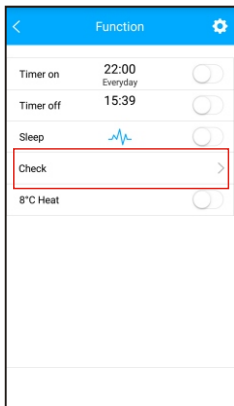
① Choose sleep function.



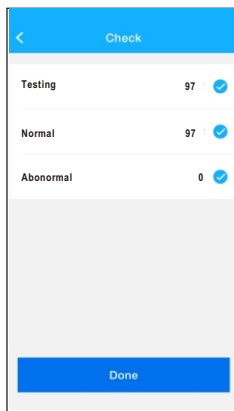
② Choose Edit, Young, Elder or Children mode. In Edit mode, user can choose the setting temperature within 8 hours. Finally confirm with "OK"

■ Check

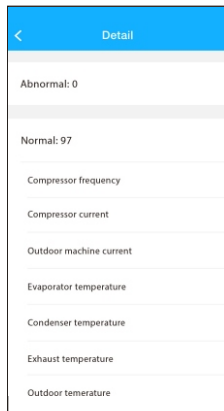
This function can simply check the AC running status. When finishing this procedure, it can show the normal items, abnormal items, and detail information.



- ① Choose check function. ② The air conditioner scan the running status.



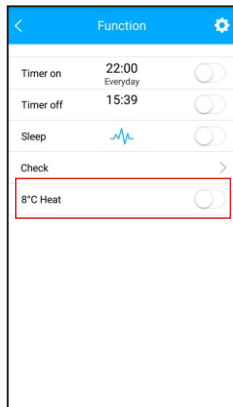
- ③ Finish check.



- ④ Press "Done", the APP will show the detail.

■ 8°C Heat

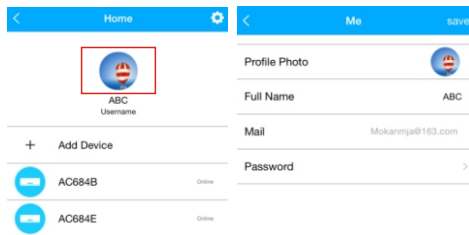
In this mode, the air conditioner will run under 8°C Heat. When people go outside, this function can protect the furniture from frost damage.



4. Change the information of device

User can modify their information and nominate the name for the devices.

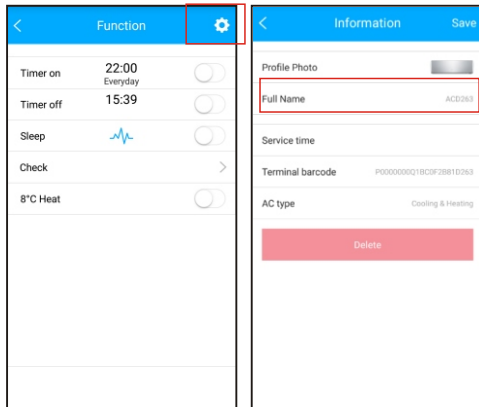
■ Modify user information



① Press the picture.

② Choose the information need to be changed, then press "Save".

■ Nominate the device



① Press the setting logo

② Nominate the device,
then press "Save".

Note: The APP may update the user interface
without notice.