

# Ceiling Convertible Type



FWE-E



Wireless Remote Controller BRC52A



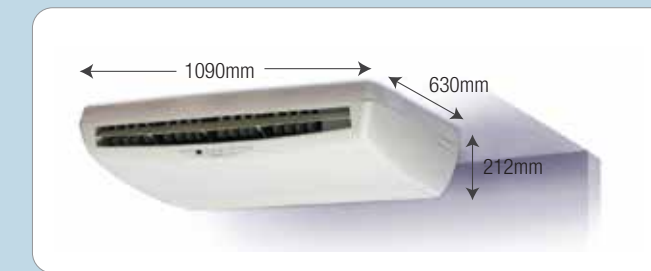
Wired Remote Controller BRC51A

- › Compact Design
- › Far Air Throw
- › Auto Air Swing
- › Service & Maintenance At Ease
- › Ceiling & Floor Installing Option
- › Versatile Installation
- › Room Temperature Sensing
- › Saranet Filter
- › Sleep Function For Cool And Heat Mode
- › Auto Restart With Last-State-Memory
- › Valve Or Valveless Control Options
- › Self Diagnosis Features
- › NIM-Able
- › Choices Of Wired Or Wireless Remote Controller

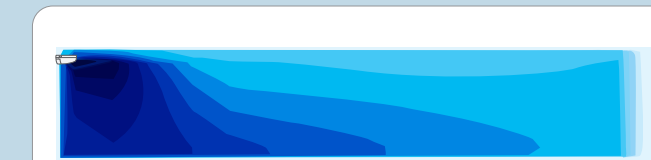


## Compact Design

Unit height as low as 212mm for installation at limited ceiling space.



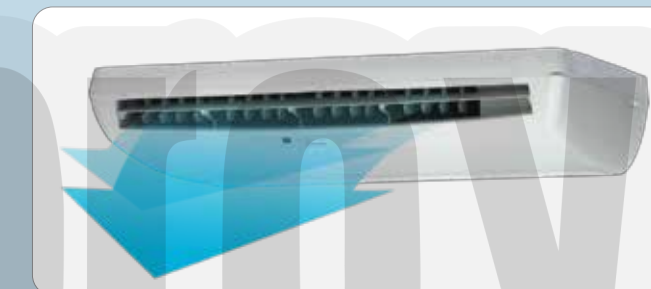
## Far Air Throw



Maximum air throw distance up to 16.5m.

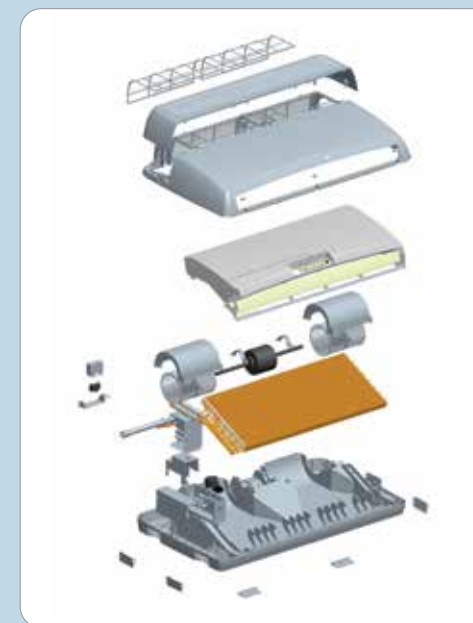
## Auto Air Swing

The motorized lower enables the air flow to be evenly distributed.



## Service & Maintenance at Ease

The washable filter can be easily accessed by just pulling down the intake grill. During servicing or repairing, only the bottom panel needs to be removed in order to access the parts like fan motor, blower, wiring connection, control box, piping connection and so on.



## Ceiling and Floor Installing Option

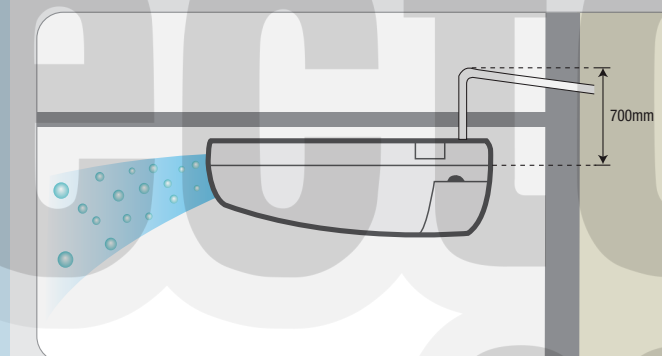
The unit is uniquely designed with possibility to be installed under or sitting on the floor to suit any interior design requirements.



\*Wall bracket is supplied as optional item.

## Versatile Installation

The unit is designed to work with high pressure head drain pump (optional). Thus offering flexibility for installation on condensate drain pipe. The drain pump comes with a high head and is incorporate with the float switch as safety protection. \* Drain pump kit supplied as optional item

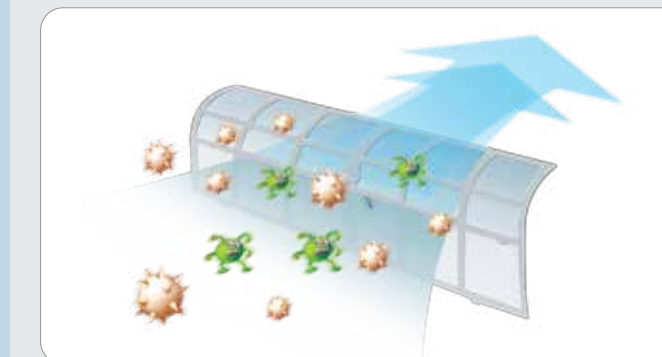


## Room Temperature Sensing

Able to sense the room temperature in order to perform more controls for comfort.

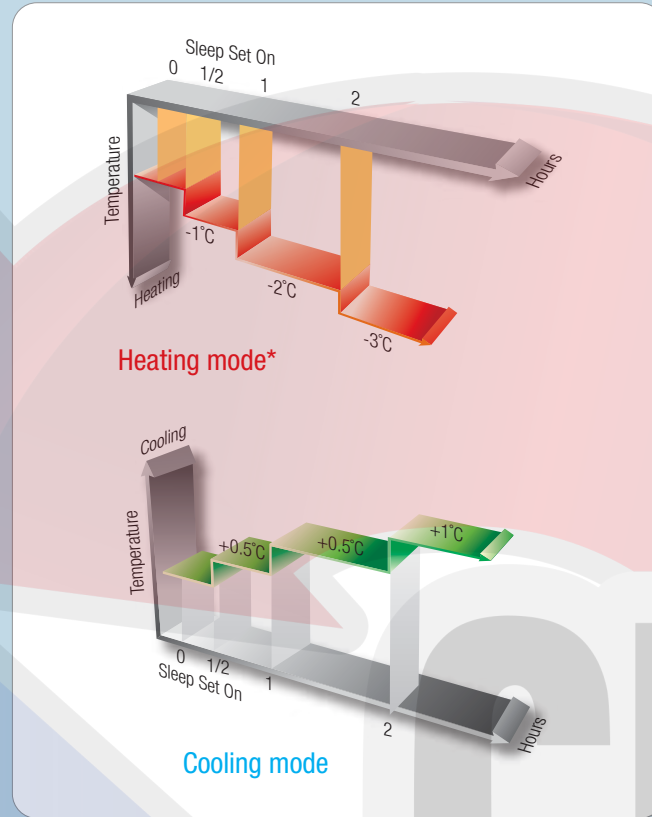
## Saranet Air Filter

The anti fungus air filter removes air-particles from the air.



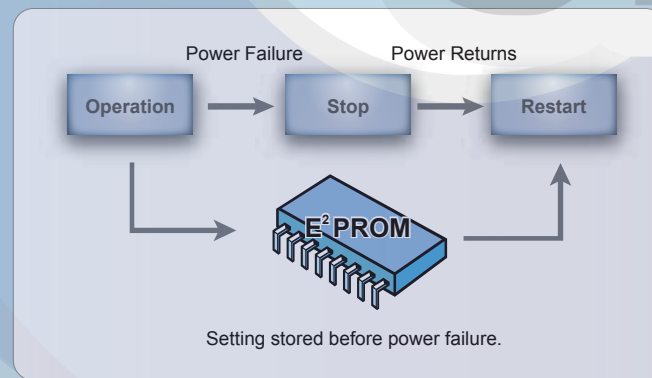
### Sleep Function For Cool And Heat Mode

Once activated, set temperature will be increased / decreased gradually according to normal sleeping temperature patterns to ensure a comfortable sleeping environment.



### Auto Restart with Last-State-Memory

In case of sudden power failure during operation, unit restarts automatically & unit will operate based on previous setting when power is resumed.



### Valve Or Valveless Control Options

The design is flexible enough to allow for either valve or valveless control installation.

### Self Diagnosis Features

This feature helps to detect any faults or malfunctioning in the system and provide user a warning by blinking of the LED lights.

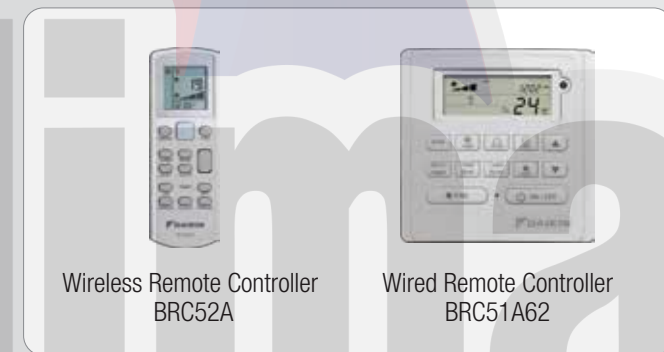
### NIM-Able

Able to communicate with the versatile NIM networking control module and offers the opportunity of one centralized control for a system of multiple indoor units in a building.

### Choices Of Wired Or Wireless Remote Controller

Compact and user friendly wireless BRC52A and wired BRC51A remote controller offer :

- Real Time Clock
- "Glow in the dark" ON/OFF Button
- Low, Medium, High fan speed options
- ON Timer Setting



### Specification for Ceiling Convertible Type ~ 50Hz

MODEL		FWE05E	FWE06E	FWE07E	FWE08E	FWE10E	FWE12E		
NOMINAL COOLING CAPACITY	Btu/h	15500	20300	21000	24800	33700	40000		
	W	4540	5950	6150	7270	9880	11720		
NOMINAL SENSIBLE COOLING CAPACITY	Btu/h	12700	15400	16150	COMING SOON				
	W	3720	4510	4730					
NOMINAL HEATING CAPACITY (ENTERING WATER TEMP. = 50 °C)	Btu/h	19500	25000	28000	34500	46300	51600		
	W	5720	7330	8210	10110	13570	15120		
NOMINAL TOTAL INPUT POWER	W	101	109	113					
NOMINAL RUNNING CURRENT	A	0.46	0.49	0.52					
POWER SOURCE	V/Ph/Hz	220-240 / 1 / 50							
REFRIGERANT TYPE		N/A							
CONTROL	AIR DISCHARGE OPERATION	AUTOMATIC LOUVER (UP & DOWN)							
		LCD WIRELESS MICRO-COMPUTER REMOTE CONTROL							
AIR FLOW	HIGH	CFM	520	580	620				
	MEDIUM	CFM	450	530	570				
	LOW	CFM	400	490	520				
NOMINAL WATER FLOW RATE	USGPM	3.43	4.49	4.67					
	Litres/min	13	17	17.68					
HEAD LOSS (COOLING)	kPa	27.4	48.1	57.1					
HEAD LOSS (HEATING) : 50 °C	kPa	24.2	42.1	50.2					
MAX. WORKING PRESSURE	kPa	1608							
SURFACE AIR VELOCITY	m/s	0.87	1.01	1.08					
SOUND PRESSURE LEVEL (H/M/L)	dB(A)	50 / 43 / 41	53 / 51 / 49	56 / 51 / 44					
UNIT DIMENSION	H X W X D mm	212 X 1090 X 630							
PACKING DIMENSION	H X W X D mm	297 X 1197 X 740							
UNIT WEIGHT	kg	27							
CONDENSATE DRAIN SIZE	mm	19.05							
PIPE CONNECTION	mm	12.7							
FAN	TYPE	BLOWER							
	DRIVE	DIRECT							
	FAN SPEED	HIGH	RPM	1192	1346	1380			
		MEDIUM	RPM	945	1238	1300			
LOW		RPM	871	1143	1200				
FAN MOTOR	TYPE	INDUCTION							
	INDEX OF PROTECTION (IP)	IP 22							
	INSULATION GRADE	B							
	RATED INPUT POWER	HIGH	W	101	109	113			
		MEDIUM	W	98	108	115			
		LOW	W	94	107	113			
	RATED RUNNING CURRENT	HIGH	A	0.46	0.49	0.52			
MEDIUM		A	0.43	0.47	0.51				
LOW		A	0.41	0.47	0.51				
STARTING CURRENT	A	5.2	10.3	24					
MOTOR OUTPUT	W	50	65	70					
POLES		4							
COIL	TUBE	MATERIAL	COPPER						
		DIAMETER	mm	6.35					
	FIN	MATERIAL	ALUMINUM						
		FACE AREA	m <sup>2</sup>	0.27					
		ROW		3					
WATER VOLUME	Litre	1.11							
AIR QUALITY FILTER	TYPE	WASHABLE SARANET FILTER							
	QUANTITY	pc	2						
CASING	COLOUR	WHITE							

NOTE:  
A) BASED ON EUROVENT CONDITIONS  
B) ADDITIONAL 10W IS REQUIRED FOR CONDENSATE DRAIN PUMP

MODE	COOLING	HEATING
ENTERING AIR TEMPERATURE	27°C DB / 19°C WB	20°C DB
ENTERING WATER TEMPERATURE	7°C	50°C (2 Pipes System) 70°C (4 Pipes System)
LEAVING WATER TEMPERATURE	12°C	45°C (2 Pipes System) 60°C (4 Pipes System)

ALL SPECIFICATIONS ARE SUBJECTED TO CHANGE BY THE MANUFACTURER WITHOUT PRIOR NOTICE.