



SAMSUNG

LIGHT COMMERCIAL PRODUCT CATALOG

TABLE OF CONTENTS

LIGHT COMMERCIAL

Standard Features	1
360 Cassette	
Features.....	3
Specifications	4
Wind-Free™* 4-Way Cassette	
Features.....	7
Specifications	8
Duct S	
Features.....	13
Specifications	14
Slim Duct	
Features.....	19
Specifications	20
Multi-Position Air Handler (MPAH)	
Features.....	23
Specifications	24
High Wall	
Features.....	29
Specifications	30
-40° Low Ambient Cooling	
Features.....	33
Specifications	34
Accessories	37
Control Options	40

STANDARD FEATURES

APPLIES TO ALL LIGHT COMMERCIAL MODELS



7-Day Programming*

Set the desired operation mode, temperature and fan speed to operate based on weekly schedules.



Auto Restart

When the system turns back on, after being turned off or after a power failure, all previous settings, including temperature, will be retained.



Compatible with DVM S Central Controls

No additional interface modules/adapters are required when connecting to Samsung NASA DVM S central controllers.



Energy Efficiency

All Samsung systems feature a high energy efficient Digital Inverter compressor. The system maintains the desired temperature without frequently shutting the compressor off and on, greatly reducing power consumption.



Fast Cooling and Heating

When you turn the system on, it will use the compressor's maximum capacity to quickly reach the desired temperature. (Excludes -40° Low Ambient Cooling)



FMC (Flat Micro-Channel Condenser Coil)

The Samsung outdoor unit's FMC (Flat Micro-Channel Condenser Coil) feature achieves higher efficiency compared to conventional fin and tube type. (Excludes Slim Duct and 12K High Wall)



Lightweight

The reduced weight of the Samsung indoor units makes it easier to handle during installation and maintenance. (Excludes Multi-Position Air Handler and -40° Low Ambient Cooling)

*With optional MWR-WE13N Premium Wired Controller on Wi-Fi adapter.

STANDARD FEATURES

APPLIES TO ALL LIGHT COMMERCIAL MODELS



Optional Wi-Fi Control Capabilities

Control and monitoring of the system can be done from anywhere with an internet connection.



Pre Filter

Samsung systems are equipped with a Pre Filter that traps dust particles, which helps keep the room clean and fresh. (Excludes Multi-Position Air Handler)



Quiet Mode

Select the quiet mode to lower the fan noise level. (Excludes Multi-Position Air Handler)



Twin Rotary BLDC Compressor

Samsung outdoor units utilize twin rotary BLDC compressors with highly stable moving parts, resulting in reduced torque variation as compared to a conventional single BLDC compressor. (Excludes 9K and 12K Slim Duct, and 12K High Wall)



Various Pipe Installation Options

The condensing unit provides four different ways to connect the piping. This feature provides great flexibility during installation, and gives a clean and organized look after the job is complete. (Excludes Slim Duct, 18K Multi-Position Air Handler, 12K and 18K High Wall, and -40° Low Ambient Cooling)



The AHRI Certified® mark indicates Samsung's participation in the AHRI Certification program. For verification of individual certified products, go to www.ahridirectory.org.



360 CASSETTE

AVAILABLE CAPACITIES (Btu/h) - 18,000 | 24,000 | 30,000 | 36,000 | 42,000 | 48,000



Open-type panel



Ceiling-type panel



Model Features

Circular Design

The innovative circular design blends harmoniously into any type of interior design.

Bladeless

Using internal booster fans, the direction of the airflow can be controlled without blades by creating low pressure areas near the air outlet.

Surround Airflow

360 degree airflow ensures optimal airflow to reduce hot and cold spots in a room.

Various Style Options

Offered in both black and white for open-type (circle) and ceiling-type (square) fascia panel options.

Standard Features**

7-Day Programming¹

Auto Restart

Compatible with DVM S Central Controls

Energy Efficient

Fast Cooling and Heating

FMC (Flat Micro-Channel
Condenser Coil)

Lightweight

Optional Wi-Fi Control Capabilities

Pre Filter

Quiet Mode

Twin Rotary BLDC Compressor

Various Pipe Installation Options

AHRI Certified

ETL Listed

Convenience Features:

- Ceiling Dust Prevention
- Easy Leveling
- Innovative Turbo Fan
- Drain Water Overflow Protection
- Electro-static, Washable, Pleated Filter
- Away Mode¹
- High Lift Drain Pump

Optional Controllers²

MWR-SH00N

MWR-SH10N

MWR-WE13N

AR-KH00U



WARRANTY

10 YEAR COMPRESSOR | 10 YEAR PARTS | 1 YEAR LIMITED LABOR

Product registration required.

Conditions apply.



*Requires MIM-H03UN Wi-Fi adapter (sold separately)

**See standard feature details on pages 1-2

¹Requires accessory controls (sold separately)

²The 360 Cassette does not include any controllers as standard. Controllers must be purchased separately; See controller details on page 40

360 CASSETTE

SPECIFICATIONS - 18,000 | 24,000

MODEL	INDOOR UNIT		AC018KN4DCH/AA	AC024KN4DCH/AA
	OUTDOOR UNIT		AC018JXADCH/AA	AC024JXADCH/AA
PERFORMANCE	CAPACITY	COOLING	18,000 Btu/h	24,000 Btu/h
		HEATING	20,000 Btu/h	27,000 Btu/h
	CAPACITY RANGE	COOLING	5,000 - 21,000 Btu/h	7,000 - 27,000 Btu/h
		HEATING	3,800 - 25,000 Btu/h	5,200 - 31,000 Btu/h
	SEER / EER		20.10 / 11.40	20.50 / 11.10
	COP		3.66	3.20
HSPF		10.0	10.0	
POWER	VOLTAGE	Ø / V / Hz	1 / 208-230 / 60	1 / 208-230 / 60
	MAX. BREAKER		15 A	20 A
	MIN. CIRCUIT AMPACITY		8.1 A	12.06 A
DIMENSIONS	W X H X D	INDOOR	37 1/4 X 11 X 37 1/4 in.	37 1/4 X 11 X 37 1/4 in.
		OUTDOOR	34 5/8 X 25 1/8 X 12 1/4 in.	37 X 39 11/16 X 13 in.
	WEIGHT	INDOOR	46.3 lbs.	46.3 lbs.
		OUTDOOR	99 lbs.	142 lbs.
SOUND PRESSURE LEVEL	INDOOR	L / M / H	29 / 32 / 35 dB(A)	29 / 33 / 36 dB(A)
	OUTDOOR	COOLING / HEATING (HIGH)	48 / 48 dB(A)	50 / 50 dB(A)
OPERATING TEMPERATURE	OUTDOOR	COOLING	(0*) 23 ≤ T ≤ 115°F	(0*) 23 ≤ T ≤ 115°F
		HEATING	-4 ≤ T ≤ 76°F	-4 ≤ T ≤ 76°F
PIPE CONNECTIONS	INDOOR & OUTDOOR	HIGH SIDE (FLARE)	1/4 in.	1/4 in.
		LOW SIDE (FLARE)	1/2 in.	5/8 in.
	MAX. LINE SET LENGTH		98 ft.	164 ft.
	MAX. VERTICAL SEPARATION		66 ft.	98 ft.
	CONDENSATE CONNECTION		1 1/4 in. OD, 1 in. ID	1 1/4 in. OD, 1 in. ID
REFRIGERANT	TYPE		R410A	R410A
	FACTORY CHARGE		45.86 oz.	74.08 oz.
	CHARGED FOR		25 ft.	25 ft.
COMPRESSOR	TYPE		Inverter Driven, Twin BLDC Rotary	Inverter Driven, Twin BLDC Rotary
EVAPORATOR FAN	TYPE		BLDC (1) With Turbo Type Fan (1)	BLDC (1) With Turbo Type Fan (1)
	AIR VOLUME	CFM (L / M / H)	480 / 547 / 646	480 / 547 / 646
CONDENSER FAN	MOTOR		BLDC With Axial Type Fan (1)	BLDC With Axial Type Fan (1)
	CFM (MAX.)		1,550	2,190
FASCIA PANEL (SOLD SEPARATELY)	CEILING TYPE (SQUARE)	WHITE	PC4NUDMAN	PC4NUDMAN
		BLACK	PC4NBDMAN	PC4NBDMAN
		L X W X H	39 3/8 X 39 3/8 X 2 5/8 in.	39 3/8 X 39 3/8 X 2 5/8 in.
	OPEN TYPE (CIRCLE)	WHITE	PC4NUNMAN	PC4NUNMAN
		BLACK	PC4NBNMAN	PC4NBNMAN
		L X W X H	41 5/16 X 3 11/16 in.	41 5/16 X 3 11/16 in.
WEIGHT		5.95 lbs.	5.95 lbs.	
ACCESSORIES	WIRED CONTROLLER	SIMPLIFIED	MWR-SHOON	MWR-SHOON
		SIMPLIFIED TOUCH CONTROLLER	MWR-SH10N	MWR-SH10N
		PREMIUM W/ SCHEDULING	MWR-WE13N	MWR-WE13N
	THERMOSTAT ADAPTER (24VAC)		TADPT2	TADPT2
	WIRELESS CONTROLLER		AR-KH00U	AR-KH00U
	WI-FI ADAPTER		MIM-H03UN	MIM-H03UN
	EXTERNAL TEMPERATURE SENSOR		MRW-TA	MRW-TA
	EXTERNAL CONTACT CONTROL		MIM-B14	MIM-B14
	CENTRAL CONTROL INTERFACE MODULE FOR CONNECTION TO DVM PLUS CONTROLS (NON-NASA)		MIM-N01	MIM-N01
	WALL BRACKET (FOR OUTDOOR UNIT)		CKN-250	CKN-250
	WIND BAFFLE/GUARD	FRONT	WBF-4M	WBF-2M
		BACK	WBB-6M	WBB-3M
	LINE SETS - INSULATED AND FLARED, INTERCONNECT CABLES INCLUDED		25' - ILS2507	25' - ILS2509
			50' - ILS5007	50' - ILS5009



Product registration required. Conditions apply.



The AHRI Certified® mark indicates Samsung's participation in the AHRI Certification program. For verification of individual certified products, go to www.ahridirectory.org.



*With Wind Baffles

Samsung HVAC maintains a policy of ongoing development, specifications are subject to change without notice.

Intertek

360 CASSETTE

SPECIFICATIONS - 30,000 | 36,000

MODEL	INDOOR UNIT		AC030KN4DCH/AA	AC036KN4DCH/AA
	OUTDOOR UNIT		AC030JXADCH/AA	AC036JXADCH/AA
PERFORMANCE	CAPACITY	COOLING	30,000 Btu/h	36,000 Btu/h
		HEATING	32,000 Btu/h	40,000 Btu/h
	CAPACITY RANGE	COOLING	9,300 - 35,000 Btu/h	14,000 - 41,000 Btu/h
		HEATING	9,000 - 38,000 Btu/h	11,500 - 48,000 Btu/h
	SEER / EER		19.20 / 10.40	20.70 / 12.00
	COP		3.06	3.40
HSPF		9.9	9.7	
POWER	VOLTAGE	ø / V / Hz	1 / 208-230 / 60	1 / 208-230 / 60
	MAX. BREAKER		30 A	35 A
	MIN. CIRCUIT AMPACITY		19.7 A	22.08 A
DIMENSIONS	W X H X D	INDOOR	37 1/4 X 14 3/8 X 37 1/4 in.	37 1/4 X 14 3/8 X 37 1/4 in.
		OUTDOOR	37 X 39 11/16 X 13 in.	37 X 48 X 13 in.
	WEIGHT	INDOOR	52.91 lbs.	52.91 lbs.
		OUTDOOR	154 lbs.	194 lbs.
SOUND PRESSURE LEVEL	INDOOR	L / M / H	31 / 35 / 38 dB(A)	32 / 38 / 43 dB(A)
	OUTDOOR	COOLING / HEATING (HIGH)	50 / 52 dB(A)	49 / 51 dB(A)
OPERATING TEMPERATURE	OUTDOOR	COOLING	(0*) 23 ≤ T ≤ 115°F	(0*) 23 ≤ T ≤ 115°F
		HEATING	-4 ≤ T ≤ 76°F	-4 ≤ T ≤ 76°F
PIPE CONNECTIONS	INDOOR & OUTDOOR	HIGH SIDE (FLARE)	3/8 in.	3/8 in.
		LOW SIDE (FLARE)	5/8 in.	5/8 in.
	MAX. LINE SET LENGTH		164 ft.	246 ft.
	MAX. VERTICAL SEPARATION		98 ft.	98 ft.
	CONDENSATE CONNECTION		1 1/4 in. OD, 1 in. ID	1 1/4 in. OD, 1 in. ID
REFRIGERANT	TYPE		R410A	R410A
	FACTORY CHARGE		91.71 oz.	98.77 oz.
	CHARGED FOR		25 ft.	25 ft.
COMPRESSOR	TYPE		Inverter Driven, Twin BLDC Rotary	Inverter Driven, Twin BLDC Rotary
EVAPORATOR FAN	TYPE		BLDC (1) With Turbo Type Fan (1)	BLDC (1) With Turbo Type Fan (1)
	AIR VOLUME	CFM (L / M / H)	632 / 741 / 904	710 / 943 / 1,179
CONDENSER FAN	MOTOR		BLDC With Axial Type Fan (1)	BLDC With Axial Type Fan (2)
	CFM (MAX.)		2,219	3,040
FASCIA PANEL (SOLD SEPARATELY)	CEILING TYPE (SQUARE)	WHITE	PC4NUDMAN	PC4NUDMAN
		BLACK	PC4NBDMAN	PC4NBDMAN
		L X W X H	39 3/8 X 39 3/8 X 2 5/8 in.	39 3/8 X 39 3/8 X 2 5/8 in.
		WEIGHT	7.94 lbs.	7.94 lbs.
	OPEN TYPE (CIRCLE)	WHITE	PC4NUNMAN	PC4NUNMAN
		BLACK	PC4NBNMAN	PC4NBNMAN
		L X W X H	41 5/16 X 3 11/16 in.	41 5/16 X 3 11/16 in.
		WEIGHT	5.95 lbs.	5.95 lbs.
ACCESSORIES	WIRED CONTROLLER	SIMPLIFIED	MWR-SH00N	MWR-SH00N
		SIMPLIFIED TOUCH CONTROLLER	MWR-SH10N	MWR-SH10N
		PREMIUM W/ SCHEDULING	MWR-WE13N	MWR-WE13N
	THERMOSTAT ADAPTER (24VAC)		TADPT2	TADPT2
	WIRELESS CONTROLLER		AR-KH00U	AR-KH00U
	WI-FI ADAPTER		MIM-H03UN	MIM-H03UN
	EXTERNAL TEMPERATURE SENSOR		MRW-TA	MRW-TA
	EXTERNAL CONTACT CONTROL		MIM-B14	MIM-B14
	CENTRAL CONTROL INTERFACE MODULE FOR CONNECTION TO DVM PLUS CONTROLS (NON-NASA)		MIM-N01	MIM-N01
	WALL BRACKET (FOR OUTDOOR UNIT)		CKN-250	CKN-250
	WIND BAFFLE/GUARD	FRONT	WBF-2M	WBF-1M2
		BACK	WBB-3M	WBB-2M
	LINE SETS - INSULATED AND FLARED, INTERCONNECT CABLES INCLUDED		25' - ILS2510	25' - ILS2510
			50' - ILS5010	50' - ILS5010



Product registration required. Conditions apply.



The AHRI Certified® mark indicates Samsung's participation in the AHRI Certification program. For verification of individual certified products, go to www.ahridirectory.org.



*With Wind Baffles

Samsung HVAC maintains a policy of ongoing development, specifications are subject to change without notice.

Intertek

360 CASSETTE

SPECIFICATIONS - 42,000 | 48,000

MODEL	INDOOR UNIT		AC042KN4DCH/AA	AC048KN4DCH/AA
	OUTDOOR UNIT		AC042JXADCH/AA	AC048JXADCH/AA
PERFORMANCE	CAPACITY	COOLING	42,000 Btu/h	48,000 Btu/h
		HEATING	47,000 Btu/h	53,000 Btu/h
	CAPACITY RANGE	COOLING	16,300 - 45,000 Btu/h	18,600 - 51,000 Btu/h
		HEATING	13,400 - 50,000 Btu/h	15,300 - 55,000 Btu/h
	SEER / EER		19.70 / 10.00	19.00 / 8.90
	COP		3.04	3.20
HSPF		9.5	9.5	
POWER	VOLTAGE	ø / V / Hz	1 / 208-230 / 60	1 / 208-230 / 60
	MAX. BREAKER		35 A	35 A
	MIN. CIRCUIT AMPACITY		22.08 A	22.08 A
DIMENSIONS	W X H X D	INDOOR	37 1/4 X 14 3/8 X 37 1/4 in.	37 1/4 X 14 3/8 X 37 1/4 in.
		OUTDOOR	37 X 48 X 13 in.	37 X 48 X 13 in.
	WEIGHT	INDOOR	52.91 lbs.	52.91 lbs.
		OUTDOOR	194 lbs.	194 lbs.
SOUND PRESSURE LEVEL	INDOOR	L / M / H	34 / 39 / 44 dB(A)	35 / 40 / 45 dB(A)
	OUTDOOR	COOLING / HEATING (HIGH)	51 / 53 dB(A)	53 / 55 dB(A)
OPERATING TEMPERATURE	OUTDOOR	COOLING	(0*) 23 ≤ T ≤ 115°F	(0*) 23 ≤ T ≤ 115°F
		HEATING	-4 ≤ T ≤ 76°F	-4 ≤ T ≤ 76°F
PIPE CONNECTIONS	INDOOR & OUTDOOR	HIGH SIDE (FLARE)	3/8 in.	3/8 in.
		LOW SIDE (FLARE)	5/8 in.	5/8 in.
	MAX. LINE SET LENGTH		246 ft.	246 ft.
	MAX. VERTICAL SEPARATION		98 ft.	98 ft.
	CONDENSATE CONNECTION		1 1/4 in. OD, 1 in. ID	1 1/4 in. OD, 1 in. ID
REFRIGERANT	TYPE		R410A	R410A
	FACTORY CHARGE		98.77 oz.	98.77 oz.
	CHARGED FOR		25 ft.	25 ft.
COMPRESSOR	TYPE		Inverter Driven, Twin BLDC Rotary	Inverter Driven, Twin BLDC Rotary
EVAPORATOR FAN	TYPE		BLDC (1) With Turbo Type Fan (1)	BLDC (1) With Turbo Type Fan (1)
	AIR VOLUME	CFM (L / M / H)	745 / 981 / 1,218	822 / 1,024 / 1,257
CONDENSER FAN	MOTOR		BLDC With Axial Type Fan (2)	BLDC With Axial Type Fan (2)
	CFM (MAX.)		3,040	3,040
FASCIA PANEL (SOLD SEPARATELY)	CEILING TYPE (SQUARE)	WHITE	PC4NUDMAN	PC4NUDMAN
		BLACK	PC4NBDMAN	PC4NBDMAN
		L X W X H	39 3/8 X 39 3/8 X 2 5/8 in.	39 3/8 X 39 3/8 X 2 5/8 in.
	WEIGHT		7.94 lbs.	7.94 lbs.
	OPEN TYPE (CIRCLE)	WHITE	PC4NUNMAN	PC4NUNMAN
		BLACK	PC4NBNMAN	PC4NBNMAN
		L X W X H	41 5/16 X 3 11/16 in.	41 5/16 X 3 11/16 in.
		WEIGHT		5.95 lbs.
ACCESSORIES	WIRED CONTROLLER	SIMPLIFIED	MWR-SHOON	MWR-SHOON
		SIMPLIFIED TOUCH CONTROLLER	MWR-SH10N	MWR-SH10N
		PREMIUM W/ SCHEDULING	MWR-WE13N	MWR-WE13N
	THERMOSTAT ADAPTER (24VAC)		TADPT2	TADPT2
	WIRELESS CONTROLLER		AR-KH00U	AR-KH00U
	WI-FI ADAPTER		MIM-H03UN	MIM-H03UN
	EXTERNAL TEMPERATURE SENSOR		MRW-TA	MRW-TA
	EXTERNAL CONTACT CONTROL		MIM-B14	MIM-B14
	CENTRAL CONTROL INTERFACE MODULE FOR CONNECTION TO DVM PLUS CONTROLS (NON-NASA)		MIM-N01	MIM-N01
	WALL BRACKET (FOR OUTDOOR UNIT)		CKN-250	CKN-250
	WIND BAFFLE/GUARD	FRONT	WBF-1M2	WBF-1M2
		BACK	WBB-2M	WBB-2M
	LINE SETS - INSULATED AND FLARED, INTERCONNECT CABLES INCLUDED		25' - ILS2510	25' - ILS2510
			50' - ILS5010	50' - ILS5010



Product registration required. Conditions apply.



The AHRI Certified® mark indicates Samsung's participation in the AHRI Certification program. For verification of individual certified products, go to www.ahridirectory.org.



*With Wind Baffles

Samsung HVAC maintains a policy of ongoing development, specifications are subject to change without notice.

Intertek

WIND-FREE™† 4-WAY CASSETTE

AVAILABLE CAPACITIES (Btu/h) STANDARD: 18,000 | 24,000
30,000 | 36,000 | 42,000 | 48,000; MAX HEAT™: 30,000 | 36,000



Available in **MAX HEAT™**

The Wind-Free™ 4-Way Cassette is equipped with all the features and benefits of the Wind-Free™ 4-Way Cassette, along with the ability to provide 100% heating capacity at 5°F and high heating output at -13°F. The integral base pan heater helps prevent ice buildup during defrost cycles. These added features allow the Wind-Free™ 4-Way Cassette Max Heat™ to perform in a myriad of applications from warm to cold climates everywhere.

- High Heating Operation
- Designed for Cold Climates
- Energy Efficient
- Wi-Fi Compatible
- Quiet Operation
- 10 Year Warranty

Model Features

Innovative Turbo Fan

The Turbo Fan with wide blades provides uniform distribution of cooling and heating from four separate outlets so the entire room cools down or warms up quickly.

Individual Blade Control

By using the remote controller, the opening angles of the four louver blades can be individually set at the same or different angles (within a 32°-65° range) for ultimate unit control.

Wind-Free™* Cooling Technology

Wind-Free™* Cooling Mode maintains the desired temperature and eliminates direct airflow by delivering air through micro holes on the unit's fascia panel when the louvers are closed, producing a dispersed and gentle flow of air defined as "still air." Wind-Free™* fascia panels include a humidity sensor to prevent condensation by restricting Wind-Free™ operation in high humidity conditions. Wind-Free™ operation is available in cooling mode only.

Standard Features¹

7-Day Programming²

Auto Restart

Compatible with DVM S Central Controls

Energy Efficient

Fast Cooling and Heating

FMC (Flat Micro-Channel
Condenser Coil)

Lightweight

Optional Wi-Fi Control Capabilities

Pre Filter

Quiet Mode

Twin Rotary BLDC Compressor

Various Pipe Installation Options

AHRI Certified

ETL Listed

Convenience Features:

- Ceiling Dust Prevention
- Easy Leveling
- Easy Blade Cleaning
- Quiet Operation
- Drain Water Overflow Protection
- Away Mode²
- High Lift Drain Pump

Optional Controllers³

MWR-SH00N

MWR-SH10N

MWR-WE13N

AR-EH03E



WARRANTY

10 YEAR COMPRESSOR | 10 YEAR PARTS | 1 YEAR LIMITED LABOR

Product registration required.

Conditions apply.

*Requires MIM-H03UN Wi-Fi adapter (sold separately)

¹See standard feature details on pages 1-2

²Requires accessory controls (sold separately)

³The Wind-Free™ 4-Way Cassette system does not include any controllers as standard. Controllers must be purchased separately; See controller details on page 40

Select Models are ENERGY STAR® Labeled.

Proper sizing and installation of equipment is critical to achieve optimal performance. Split system air conditioners and heat pumps (excluding ductless systems) must be matched with appropriate coil components to meet ENERGY STAR® criteria. Ask your contractor for details or visit www.energystar.gov.

[†]The Wind-Free™ unit delivers an air current that is under 0.15 m/s while in Wind-Free™ mode. Air velocity that is below 0.15 m/s is considered "still air" as defined by ASHRAE 55-2013 (American Society of Heating, Refrigerating, and Air-Conditioning Engineers).

WIND-FREE™† 4-WAY CASSETTE

SPECIFICATIONS - 18,000 | 24,000

MODEL	INDOOR UNIT		AC018NN4DCH/AA	AC024NN4DCH/AA
	OUTDOOR UNIT		AC018JXADCH/AA	AC024JXADCH/AA
PERFORMANCE	CAPACITY	COOLING	18,000 Btu/h	24,000 Btu/h
		HEATING	20,000 Btu/h	27,000 Btu/h
	CAPACITY RANGE	COOLING	5,000 - 21,000 Btu/h	7,000 - 27,000 Btu/h
		HEATING	3,800 - 25,000 Btu/h	5,200 - 31,000 Btu/h
	SEER / EER		20.1 / 11.7	20.5 / 11.4
	COP		3.66	3.17
HSPF		10.0	9.7	
POWER	VOLTAGE	ø / V / Hz	1 / 208-230 / 60	1 / 208-230 / 60
	MAX. BREAKER		15 A	20 A
	MIN. CIRCUIT AMPACITY		8.1 A	12.06 A
DIMENSIONS	W X H X D	INDOOR	33 1/16 X 8 X 33 1/16 in.	33 1/16 X 8 X 33 1/16 in.
		OUTDOOR	34 5/8 X 25 1/8 X 12 1/4 in.	37 X 39 11/16 X 12 3/4 in.
	WEIGHT	INDOOR	33.07 lbs.	33.07 lbs.
		OUTDOOR	99 lbs.	154 lbs.
SOUND PRESSURE LEVEL	INDOOR	L / M / H	30 / 33 / 36 dB(A)	30 / 33 / 36 dB(A)
	OUTDOOR	COOLING / HEATING (HIGH)	48 / 48 dB(A)	50 / 50 dB(A)
OPERATING TEMPERATURE	OUTDOOR	COOLING	(0*) 23 ≤ T ≤ 115°F	(0*) 23 ≤ T ≤ 115°F
		HEATING	-4 ≤ T ≤ 76°F	-4 ≤ T ≤ 76°F
PIPE CONNECTIONS	INDOOR & OUTDOOR	HIGH SIDE (FLARE)	1/4 in.	1/4 in.
		LOW SIDE (FLARE)	1/2 in.	5/8 in.
	MAX. LINE SET LENGTH		98 ft.	164 ft.
	MAX. VERTICAL SEPARATION		66 ft.	98 ft.
	CONDENSATE CONNECTION		1 1/4 in. OD, 1 in. ID	1 1/4 in. OD, 1 in. ID
REFRIGERANT	TYPE		R410A	R410A
	FACTORY CHARGE		45.86 oz.	74.08 oz.
	CHARGED FOR		25 ft.	25 ft.
COMPRESSOR	TYPE		Inverter Driven, Twin BLDC Rotary	Inverter Driven, Twin BLDC Rotary
EVAPORATOR FAN	TYPE		BLDC (1) With Turbo Type Fan (1)	BLDC (1) With Turbo Type Fan (1)
	AIR VOLUME	CFM (L / M / H)	430 / 490 / 580	430 / 490 / 580
CONDENSER FAN	MOTOR		BLDC With Axial Type Fan (1)	BLDC With Axial Type Fan (1)
	CFM (MAX.)		1,550	2,190
FASCIA PANEL (SOLD SEPARATELY)	MODEL NUMBER		PC4NUFMAN	PC4NUFMAN
	L X W X H		37 3/8 X 37 3/8 X 2 1/2 in.	37 3/8 X 37 3/8 X 2 1/2 in.
	WEIGHT		13.88 lbs.	13.88 lbs.
ACCESSORIES	WIRED CONTROLLER	SIMPLIFIED	MWR-SH00N	MWR-SH00N
		SIMPLIFIED TOUCH CONTROLLER	MWR-SH10N	MWR-SH10N
		PREMIUM W/ SCHEDULING	MWR-WE13N	MWR-WE13N
	THERMOSTAT ADAPTER (24VAC)		TADPT2	TADPT2
	WIRELESS CONTROLLER		AR-EH03E	AR-EH03E
	WI-FI ADAPTER		MIM-H03UN	MIM-H03UN
	EXTERNAL TEMPERATURE SENSOR		MRW-TA	MRW-TA
	EXTERNAL CONTACT CONTROL		MIM-B14	MIM-B14
	CENTRAL CONTROL INTERFACE MODULE FOR CONNECTION TO DVM PLUS CONTROLS (NON-NASA)		MIM-N01	MIM-N01
	WALL BRACKET (FOR OUTDOOR UNIT)		CKN-250	CKN-250
	WIND BAFFLE/GUARD	FRONT	WBF-4M	WBF-2M
		BACK	WBB-6M	WBB-3M
	LINE SETS - INSULATED AND FLARED, INTERCONNECT CABLES INCLUDED		25' - ILS2507	25' - ILS2509
50' - ILS5007			50' - ILS5009	



Product registration required.
Conditions apply.



The AHRI Certified® mark indicates Samsung's participation in the AHRI Certification program. For verification of individual certified products, go to www.ahridirectory.org.

*With Wind Baffles

Samsung HVAC maintains a policy of ongoing development, specifications are subject to change without notice.

†The Wind-Free™ unit delivers an air current that is under 0.15 m/s while in Wind-Free™ mode. Air velocity that is below 0.15 m/s is considered "still air" as defined by ASHRAE 55-2013 (American Society of Heating, Refrigerating, and Air-Conditioning Engineers).



WIND-FREE™+ 4-WAY CASSETTE

SPECIFICATIONS - 30,000 | 36,000

MODEL	INDOOR UNIT		AC030NN4DCH/AA	AC036NN4DCH/AA
	OUTDOOR UNIT		AC030JXADCH/AA	AC036JXADCH/AA
PERFORMANCE	CAPACITY	COOLING	30,000 Btu/h	36,000 Btu/h
		HEATING	32,000 Btu/h	40,000 Btu/h
	CAPACITY RANGE	COOLING	9,300 - 35,000 Btu/h	14,000 - 41,000 Btu/h
		HEATING	9,000 - 38,000 Btu/h	11,500 - 48,000 Btu/h
	SEER / EER		19.2 / 10.4	20.5 / 12.1
	COP		3.02	3.37
HSPF		9.8	9.5	
POWER	VOLTAGE	ø / V / Hz	1 / 208-230 / 60	1 / 208-230 / 60
	MAX. BREAKER		30 A	35 A
	MIN. CIRCUIT AMPACITY		19.7 A	22.08 A
DIMENSIONS	W X H X D	INDOOR	33 1/16 X 11 3/8 X 33 1/16 in.	33 1/16 X 11 3/8 X 33 1/16 in.
		OUTDOOR	37 X 39 11/16 X 12 3/4 in.	37 X 48 X 13 in.
	WEIGHT	INDOOR	40.79 lbs.	40.79 lbs.
		OUTDOOR	154 lbs.	194 lbs.
SOUND PRESSURE LEVEL	INDOOR	L / M / H	32 / 35 / 38 dB(A)	33 / 38 / 43 dB(A)
	OUTDOOR	COOLING / HEATING (HIGH)	50 / 52 dB(A)	49 / 51 dB(A)
OPERATING TEMPERATURE	OUTDOOR	COOLING	(0*) 23 ≤ T ≤ 115°F	(0*) 23 ≤ T ≤ 115°F
		HEATING	-4 ≤ T ≤ 76°F	-4 ≤ T ≤ 76°F
PIPE CONNECTIONS	INDOOR & OUTDOOR	HIGH SIDE (FLARE)	3/8 in.	3/8 in.
		LOW SIDE (FLARE)	5/8 in.	5/8 in.
	MAX. LINE SET LENGTH		164 ft.	246 ft.
	MAX. VERTICAL SEPARATION		98 ft.	98 ft.
	CONDENSATE CONNECTION		1 1/4 in. OD, 1 in. ID	1 1/4 in. OD, 1 in. ID
REFRIGERANT	TYPE		R410A	R410A
	FACTORY CHARGE		91.71 oz.	98.77 oz.
	CHARGED FOR		25 ft.	25 ft.
COMPRESSOR	TYPE		Inverter Driven, Twin BLDC Rotary	Inverter Driven, Twin BLDC Rotary
EVAPORATOR FAN	TYPE		BLDC (1) With Turbo Type Fan (1)	BLDC (1) With Turbo Type Fan (1)
	AIR VOLUME	CFM (L / M / H)	590 / 715 / 840	620 / 840 / 1,020
CONDENSER FAN	MOTOR		BLDC With Axial Type Fan (1)	BLDC With Axial Type Fan (2)
	CFM (MAX.)		2,220	3,040
FASCIA PANEL (SOLD SEPARATELY)	MODEL NUMBER		PC4NUFMAN	PC4NUFMAN
	L X W X H		37 3/8 X 37 3/8 X 2 1/2 in.	37 3/8 X 37 3/8 X 2 1/2 in.
	WEIGHT		13.88 lbs.	13.88 lbs.
ACCESSORIES	WIRED CONTROLLER	SIMPLIFIED	MWR-SH00N	MWR-SH00N
		SIMPLIFIED TOUCH CONTROLLER	MWR-SH10N	MWR-SH10N
		PREMIUM W/ SCHEDULING	MWR-WE13N	MWR-WE13N
	THERMOSTAT ADAPTER (24VAC)		TADPT2	TADPT2
	WIRELESS CONTROLLER		AR-EH03E	AR-EH03E
	WI-FI ADAPTER		MIM-H03UN	MIM-H03UN
	EXTERNAL TEMPERATURE SENSOR		MRW-TA	MRW-TA
	EXTERNAL CONTACT CONTROL		MIM-B14	MIM-B14
	CENTRAL CONTROL INTERFACE MODULE FOR CONNECTION TO DVM PLUS CONTROLS (NON-NASA)		MIM-N01	MIM-N01
	WALL BRACKET (FOR OUTDOOR UNIT)		CKN-250	CKN-250
	WIND BAFFLE/GUARD	FRONT	WBF-2M	WBF-1M2
		BACK	WBB-3M	WBB-2M
	LINE SETS - INSULATED AND FLARED, INTERCONNECT CABLES INCLUDED		25' - ILS2510	25' - ILS2510
		50' - ILS5010	50' - ILS5010	



Product registration required. Conditions apply.



The AHRI Certified® mark indicates Samsung's participation in the AHRI Certification program. For verification of individual certified products, go to www.ahridirectory.org.

*With Wind Baffles

Samsung HVAC maintains a policy of ongoing development, specifications are subject to change without notice.

†The Wind-Free™ unit delivers an air current that is under 0.15 m/s while in Wind-Free™ mode. Air velocity that is below 0.15 m/s is considered "still air" as defined by ASHRAE 55-2013 (American Society of Heating, Refrigerating, and Air-Conditioning Engineers).



WIND-FREE™† 4-WAY CASSETTE

SPECIFICATIONS - 42,000 | 48,000

MODEL	INDOOR UNIT		AC042NN4DCH/AA	AC048NN4DCH/AA
	OUTDOOR UNIT		AC042JXADCH/AA	AC048JXADCH/AA
PERFORMANCE	CAPACITY	COOLING	42,000 Btu/h	48,000 Btu/h
		HEATING	47,000 Btu/h	53,000 Btu/h
	CAPACITY RANGE	COOLING	16,300 - 45,000 Btu/h	18,600 - 51,000 Btu/h
		HEATING	13,400 - 50,000 Btu/h	15,300 - 55,000 Btu/h
	SEER / EER		19.6 / 10.4	18.8 / 9.7
	COP		3.17	3.08
HSPF		9.5	9.5	
POWER	VOLTAGE	ø / V / Hz	1 / 208-230 / 60	1 / 208-230 / 60
	MAX. BREAKER		35 A	35 A
	MIN. CIRCUIT AMPACITY		22.08 A	22.08 A
DIMENSIONS	W X H X D	INDOOR	33 1/16 X 11 3/8 X 33 1/16 in.	33 1/16 X 11 3/8 X 33 1/16 in.
		OUTDOOR	37 X 48 X 13 in.	37 X 48 X 13 in.
	WEIGHT	INDOOR	40.79 lbs.	40.79 lbs.
		OUTDOOR	194 lbs.	194 lbs.
SOUND PRESSURE LEVEL	INDOOR	L / M / H	34 / 40 / 44 dB(A)	35 / 41 / 45 dB(A)
	OUTDOOR	COOLING / HEATING (HIGH)	51 / 53 dB(A)	53 / 55 dB(A)
OPERATING TEMPERATURE	OUTDOOR	COOLING	(0*) 23 ≤ T ≤ 115°F	(0*) 23 ≤ T ≤ 115°F
		HEATING	-4 ≤ T ≤ 76°F	-4 ≤ T ≤ 76°F
PIPE CONNECTIONS	INDOOR & OUTDOOR	HIGH SIDE (FLARE)	3/8 in.	3/8 in.
		LOW SIDE (FLARE)	5/8 in.	5/8 in.
	MAX. LINE SET LENGTH		246 ft.	246 ft.
	MAX. VERTICAL SEPARATION		98 ft.	98 ft.
CONDENSATE CONNECTION		1 1/4 in. OD, 1 in. ID	1 1/4 in. OD, 1 in. ID	
REFRIGERANT	TYPE		R410A	R410A
	FACTORY CHARGE		98.77 oz.	98.77 oz.
	CHARGED FOR		25 ft.	25 ft.
COMPRESSOR	TYPE		Inverter Driven, Twin BLDC Rotary	Inverter Driven, Twin BLDC Rotary
EVAPORATOR FAN	TYPE		BLDC (1) With Turbo Type Fan (1)	BLDC (1) With Turbo Type Fan (1)
	AIR VOLUME	CFM (L / M / H)	670 / 890 / 1,170	715 / 940 / 1,230
CONDENSER FAN	MOTOR		BLDC With Axial Type Fan (2)	BLDC With Axial Type Fan (2)
	CFM (MAX.)		3,040	3,040
FASCIA PANEL (SOLD SEPARATELY)	MODEL NUMBER		PC4NUFMAN	PC4NUFMAN
	L X W X H		37 3/8 X 37 3/8 X 2 1/2 in.	37 3/8 X 37 3/8 X 2 1/2 in.
	WEIGHT		13.88 lbs.	13.88 lbs.
ACCESSORIES	WIRED CONTROLLER	SIMPLIFIED	MWR-SH00N	MWR-SH00N
		SIMPLIFIED TOUCH CONTROLLER	MWR-SH10N	MWR-SH10N
		PREMIUM W/ SCHEDULING	MWR-WE13N	MWR-WE13N
	THERMOSTAT ADAPTER (24VAC)		TADPT2	TADPT2
	WIRELESS CONTROLLER		AR-EH03E	AR-EH03E
	WI-FI ADAPTER		MIM-H03UN	MIM-H03UN
	EXTERNAL TEMPERATURE SENSOR		MRW-TA	MRW-TA
	EXTERNAL CONTACT CONTROL		MIM-B14	MIM-B14
	CENTRAL CONTROL INTERFACE MODULE FOR CONNECTION TO DVM PLUS CONTROLS (NON-NASA)		MIM-N01	MIM-N01
	WALL BRACKET (FOR OUTDOOR UNIT)		CKN-250	CKN-250
	WIND BAFFLE/GUARD	FRONT	WBF-1M2	WBF-1M2
BACK		WBB-2M	WBB-2M	
LINE SETS - INSULATED AND FLARED, INTERCONNECT CABLES INCLUDED		25' - ILS2510	25' - ILS2510	
		50' - ILS5010	50' - ILS5010	



Product registration required. Conditions apply.



The AHRI Certified® mark indicates Samsung's participation in the AHRI Certification program. For verification of individual certified products, go to www.ahridirectory.org.



*With Wind Baffles

Samsung HVAC maintains a policy of ongoing development, specifications are subject to change without notice.

†The Wind-Free™ unit delivers an air current that is under 0.15 m/s while in Wind-Free™ mode. Air velocity that is below 0.15 m/s is considered "still air" as defined by ASHRAE 55-2013 (American Society of Heating, Refrigerating, and Air-Conditioning Engineers).

WIND-FREE™† 4-WAY CASSETTE MAX HEAT™

SPECIFICATIONS - 30,000 | 36,000



MODEL	INDOOR UNIT		AC030NN4DCH/AA	AC036NN4DCH/AA
	OUTDOOR UNIT		AC030JXSCH/AA	AC036JXSCH/AA
PERFORMANCE	CAPACITY	COOLING	30,000 Btu/h	36,000 Btu/h
		HEATING	32,000 Btu/h	40,000 Btu/h
	CAPACITY RANGE	COOLING	13,000 - 36,000 Btu/h	14,000 - 42,000 Btu/h
		HEATING	11,000 - 39,000 Btu/h	12,000 - 48,000 Btu/h
	SEER / EER		21.0 / 13.1	20.0 / 12.9
	COP		3.84	3.64
HSPF		10.1	10.4	
POWER	VOLTAGE	ø / V / Hz	1 / 208-230 / 60	1 / 208-230 / 60
	MAX. BREAKER		45 A	45 A
	MIN. CIRCUIT AMPACITY		26.31 A	26.31 A
DIMENSIONS	W X H X D	INDOOR	33 X 11 5/16 X 33 in.	33 X 11 5/16 X 33 in.
		OUTDOOR	37 X 55 7/8 X 13 in.	37 X 55 7/8 X 13 in.
	WEIGHT	INDOOR	41.89 lbs.	41.89 lbs.
		OUTDOOR	211.64 lbs.	211.64 lbs.
SOUND PRESSURE LEVEL	INDOOR	L / M / H	32 / 35 / 38 dB(A)	33 / 38 / 43 dB(A)
	OUTDOOR	COOLING / HEATING (HIGH)	49 / 50 dB(A)	51 / 53 dB(A)
OPERATING TEMPERATURE	OUTDOOR	COOLING	(-4*) 23 ≤ T ≤ 115°F	(-4*) 23 ≤ T ≤ 115°F
		HEATING	-13 ≤ T ≤ 76°F	-13 ≤ T ≤ 76°F
PIPE CONNECTIONS	INDOOR & OUTDOOR	HIGH SIDE (FLARE)	3/8 in.	3/8 in.
		LOW SIDE (FLARE)	5/8 in.	5/8 in.
	MAX. LINE SET LENGTH		246 ft.	246 ft.
	MAX. VERTICAL SEPARATION		98 ft.	98 ft.
CONDENSATE CONNECTION		1 1/4 in. OD, 1 in. ID	1 1/4 in. OD, 1 in. ID	
REFRIGERANT	TYPE		R410A	R410A
	FACTORY CHARGE		102.29 oz.	102.29 oz.
	CHARGED FOR		25 ft.	25 ft.
COMPRESSOR	TYPE		Inverter Driven, Twin BLDC Rotary	Inverter Driven, Twin BLDC Rotary
EVAPORATOR FAN	TYPE		BLDC With Turbo Type Fan (1)	BLDC With Turbo Type Fan (1)
	AIR VOLUME	CFM (L / M / H)	590 / 715 / 840	620 / 840 / 1,020
CONDENSER FAN	MOTOR		BLDC With Axial Type Fan (2)	BLDC With Axial Type Fan (2)
	CFM (MAX.)		4,415	4,415
FASCIA PANEL (SOLD SEPARATELY)	MODEL NUMBER		PC4NUFMAN	PC4NUFMAN
	L X W X H		37 3/8 X 37 3/8 X 2 1/2 in.	37 3/8 X 37 3/8 X 2 1/2 in.
	WEIGHT		13.88 lbs.	13.88 lbs.
ACCESSORIES	WIRED CONTROLLER	SIMPLIFIED	MWR-SH00N	MWR-SH00N
		SIMPLIFIED TOUCH CONTROLLER	MWR-SH10N	MWR-SH10N
		PREMIUM W/ SCHEDULING	MWR-WE13N	MWR-WE13N
	THERMOSTAT ADAPTER (24VAC)		TADPT2	TADPT2
	WIRELESS CONTROLLER		AR-EH03E	AR-EH03E
	WI-FI ADAPTER		MIM-H03UN	MIM-H03UN
	EXTERNAL TEMPERATURE SENSOR		MRW-TA	MRW-TA
	EXTERNAL CONTACT CONTROL		MIM-B14	MIM-B14
	CENTRAL CONTROL INTERFACE MODULE FOR CONNECTION TO DVM PLUS CONTROLS (NON-NASA)		MIM-N01	MIM-N01
	WALL BRACKET (FOR OUTDOOR UNIT)		CKN-250	CKN-250
	WIND BAFFLE/GUARD	FRONT	WBF-6M	WBF-6M
		BACK	WBB-4M	WBB-4M
LINE SETS - INSULATED AND FLARED, INTERCONNECT CABLES INCLUDED		25' - ILS2510	25' - ILS2510	
		50' - ILS5010	50' - ILS5010	
CERTIFICATIONS	ENERGY STAR® CERTIFIED			



Product registration required. Conditions apply.



The AHRI Certified® mark indicates Samsung's participation in the AHRI Certification program. For verification of individual certified products, go to www.ahridirectory.org.

*With Wind Baffles

†The Wind-Free™ unit delivers an air current that is under 0.15 m/s while in Wind-Free™ mode. Air velocity that is below 0.15 m/s is considered "still air" as defined by ASHRAE 55-2013 (American Society of Heating, Refrigerating, and Air-Conditioning Engineers).

Proper sizing and installation of equipment is critical to achieve performance. Split system air conditioners and heat pumps (excluding ductless systems) must be matched with appropriate coil components to meet ENERGY STAR® criteria. Ask your contractor for details or visit www.energystar.gov.

Samsung HVAC maintains a policy of ongoing development, specifications are subject to change without notice.



DUCT S

AVAILABLE CAPACITIES (Btu/h) STANDARD: 18,000 | 24,000 | 30,000 | 36,000 | 42,000 | 48,000; MAX HEAT™: 30,000 | 36,000



Available in MAX HEAT™

The Duct S Max Heat™ is equipped with all the features and benefits of the Duct S, along with the ability to provide 100% heating capacity at 5°F and high heating output at -13°F. The integral base pan heater helps prevent ice buildup during defrost cycles. These added features allow the Duct S Max Heat™ to perform in a myriad of applications from warm to cold climates everywhere.

- High Heating Operation
- Designed for Cold Climates
- Energy Efficient
- Wi-Fi Compatible
- Quiet Operation
- 10 Year Warranty

Model Features

Smart Pressure Control

The Duct S will adjust the fan speed based on the duct system external static pressure (ESP), delivering consistent cooling and heating, regardless of the surrounding environment.

Easy Service Access

The Duct S's slim, compact size offers multiple service access points (top, bottom, left, and right) for easy installation and service.

Standard Features**

7-Day Programming¹
Auto Restart
Compatible with DVM S Central Controls
Energy Efficient
Fast Cooling and Heating

FMC (Flat Micro-Channel Condenser Coil)
Lightweight
Optional Wi-Fi Control Capabilities
Pre Filter
Quiet Mode

Twin Rotary BLDC Compressor
Various Pipe Installation Options
AHRI Certified
ETL Listed

Convenience Features:

- High Lift Drain Pump
- Away Mode¹
- Drain Water Overflow Protection

Optional Controllers²

MWR-SH00N
MWR-SH10N
MWR-WE13N
AR-EH03E³



WARRANTY

10 YEAR COMPRESSOR | 10 YEAR PARTS | 1 YEAR LIMITED LABOR

*Product registration required.
Conditions apply.*

¹Requires MIM-H03UN Wi-Fi adapter (sold separately)

²See standard feature details on pages 1-2

³Requires accessory controls (sold separately)

²The Duct S system does not include any controllers as standard.

Controllers must be purchased separately; See controller details on page 40

³Requires MRK-A10N to use wireless remote controller

DUCT S

SPECIFICATIONS - 18,000 | 24,000

MODEL	INDOOR UNIT		AC018MNHDC/AA	AC024MNHDC/AA
	OUTDOOR UNIT		AC018JXADCH/AA	AC024JXADCH/AA
PERFORMANCE	CAPACITY	COOLING	18,000 Btu/h	24,000 Btu/h
		HEATING	20,000 Btu/h	27,000 Btu/h
	CAPACITY RANGE	COOLING	5,000 - 21,000 Btu/h	7,000 - 27,000 Btu/h
		HEATING	3,800 - 25,000 Btu/h	5,200 - 31,000 Btu/h
	SEER / EER		18.6 / 9.4	20.0 / 11.8
	COP		3.10	3.44
HSPF		10.6	10.6	
POWER	VOLTAGE	ø / V / Hz	1 / 208-230 / 60	1 / 208-230 / 60
	MAX. BREAKER		15 A	20 A
	MIN. CIRCUIT AMPACITY		10.0 A	13.5 A
DIMENSIONS	W X H X D	INDOOR	33 1/2 X 9 13/16 X 27 9/16 in.	47 1/4 X 9 13/16 X 27 9/16 in.
		OUTDOOR	34 5/8 X 25 1/8 X 12 1/4 in.	37 X 39 11/16 X 12 3/4 in.
	WEIGHT	INDOOR	68.8 lbs.	89.3 lbs.
		OUTDOOR	99 lbs.	142 lbs.
	DUCT CONNECTIONS	SUPPLY	32 3/16 X 8 11/16 in.	45 15/16 X 8 11/16 in.
		RETURN	32 3/16 X 8 11/16 in.	45 15/16 X 8 11/16 in.
SOUND PRESSURE LEVEL	INDOOR	L / M / H	26 / 30 / 34 dB(A)	28 / 32 / 36 dB(A)
	OUTDOOR	COOLING / HEATING (HIGH)	48 / 48 dB(A)	50 / 50 dB(A)
OPERATING TEMPERATURE	OUTDOOR	COOLING	(0*) 23 ≤ T ≤ 115°F	(0*) 23 ≤ T ≤ 115°F
		HEATING	-4 ≤ T ≤ 76°F	-4 ≤ T ≤ 76°F
PIPE CONNECTIONS	INDOOR & OUTDOOR	HIGH SIDE (FLARE)	1/4 in.	1/4 in.
		LOW SIDE (FLARE)	1/2 in.	5/8 in.
	MAX. LINE SET LENGTH		98 ft.	164 ft.
	MAX. VERTICAL SEPARATION		66 ft.	98 ft.
	CONDENSATE CONNECTION		3/4 in. PVC (with included adapter)	3/4 in. PVC (with included adapter)
REFRIGERANT	TYPE		R410A	R410A
	FACTORY CHARGE		45.86 oz.	74.08 oz.
	CHARGED FOR		25 ft.	25 ft.
COMPRESSOR	TYPE		Inverter Driven, Twin BLDC Rotary	Inverter Driven, Twin BLDC Rotary
EVAPORATOR FAN	TYPE		BLDC (1) With Sirocco Fan (2)	BLDC (1) With Sirocco Fan (3)
	AIR VOLUME	CFM (L / M / H)	353 / 477 / 600	530 / 618 / 706
		TOTAL CFM RANGE	350 - 790	530 - 1,035
	STATIC PRESSURE	STANDARD	0.1 in. WC	0.1 in. WC
MIN. / MAX.		0.1 / 0.6 in. WC	0.1 / 0.8 in. WC	
CONDENSER FAN	MOTOR		BLDC With Axial Type Fan (1)	BLDC With Axial Type Fan (1)
	CFM (MAX.)		1,550	2,190
ACCESSORIES	WIRED CONTROLLER	SIMPLIFIED	MWR-SH00N	MWR-SH00N
		SIMPLIFIED TOUCH CONTROLLER	MWR-SH10N	MWR-SH10N
		PREMIUM W/ SCHEDULING	MWR-WE13N	MWR-WE13N
	THERMOSTAT ADAPTER (24VAC)		TADPT2	TADPT2
	WIRELESS SIGNAL CONTROL	WIRELESS SIGNAL RECEIVER	MRK-A10N	MRK-A10N
		WIRELESS CONTROLLER	AR-EH03E	AR-EH03E
	WI-FI ADAPTER		MIM-H03UN	MIM-H03UN
	FILTER BOX		FB-DS1	FB-DS2
	EXTERNAL TEMPERATURE SENSOR		MRW-TA	MRW-TA
	EXTERNAL CONTACT CONTROL		MIM-B14	MIM-B14
	CENTRAL CONTROL INTERFACE MODULE FOR CONNECTION TO DVM PLUS CONTROLS (NON-NASA)		MIM-N01	MIM-N01
	WALL BRACKET (FOR OUTDOOR UNIT)		CKN-250	CKN-250
	WIND BAFFLE/GUARD	FRONT	WBF-4M	WBF-2M
		BACK	WBB-6M	WBB-3M
LINE SETS - INSULATED AND FLARED, INTERCONNECT CABLES INCLUDED		25' - ILS2507	25' - ILS2509	
		50' - ILS5007	50' - ILS5009	



Product registration required. Conditions apply.



The AHRI Certified® mark indicates Samsung's participation in the AHRI Certification program. For verification of individual certified products, go to www.ahridirectory.org.



*With Wind Baffles

Samsung HVAC maintains a policy of ongoing development, specifications are subject to change without notice.

Intertek

DUCT S

SPECIFICATIONS - 30,000 | 36,000

MODEL	INDOOR UNIT		AC030MNHDC/AA	AC036MNHDC/AA
	OUTDOOR UNIT		AC030JXADCH/AA	AC036JXADCH/AA
PERFORMANCE	CAPACITY	COOLING	30,000 Btu/h	36,000 Btu/h
		HEATING	32,000 Btu/h	40,000 Btu/h
	CAPACITY RANGE	COOLING	9,300 - 35,000 Btu/h	14,000 - 41,000 Btu/h
		HEATING	9,000 - 38,000 Btu/h	11,500 - 48,000 Btu/h
	SEER / EER		18.4 / 10.0	20.0 / 11.5
	COP		3.16	3.54
HSPF		10.2	10.2	
POWER	VOLTAGE	ø / V / Hz	1 / 208-230 / 60	1 / 208-230 / 60
	MAX. BREAKER		30 A	40 A
	MIN. CIRCUIT AMPACITY		23 A	26.5 A
DIMENSIONS	W X H X D	INDOOR	47 1/4 X 9 13/16 X 27 9/16 in.	51 3/16 X 11 13/16 X 27 9/16 in.
		OUTDOOR	37 X 39 11/16 X 12 3/4 in.	37 X 48 X 13 in.
	WEIGHT	INDOOR	89.3 lbs.	99.6 lbs.
		OUTDOOR	154 lbs.	194 lbs.
	DUCT CONNECTIONS	SUPPLY	45 15/16 X 8 11/16 in.	49 15/16 X 10 5/8 in.
		RETURN	45 15/16 X 8 11/16 in.	49 15/16 X 10 5/8 in.
SOUND PRESSURE LEVEL	INDOOR	L / M / H	29 / 33 / 37 dB(A)	30 / 34 / 38 dB(A)
	OUTDOOR	COOLING / HEATING (HIGH)	50 / 52 dB(A)	49 / 51 dB(A)
OPERATING TEMPERATURE	OUTDOOR	COOLING	(0*) 23 ≤ T ≤ 115°F	(0*) 23 ≤ T ≤ 115°F
		HEATING	-4 ≤ T ≤ 76°F	-4 ≤ T ≤ 76°F
PIPE CONNECTIONS	INDOOR & OUTDOOR	HIGH SIDE (FLARE)	3/8 in.	3/8 in.
		LOW SIDE (FLARE)	5/8 in.	5/8 in.
	MAX. LINE SET LENGTH		164 ft.	246 ft.
	MAX. VERTICAL SEPARATION		98 ft.	98 ft.
	CONDENSATE CONNECTION		3/4 in. PVC (with included adapter)	3/4 in. PVC (with included adapter)
REFRIGERANT	TYPE		R410A	R410A
	FACTORY CHARGE		91.71 oz.	98.77 oz.
	CHARGED FOR		25 ft.	25 ft.
COMPRESSOR	TYPE		Inverter Driven, Twin BLDC Rotary	Inverter Driven, Twin BLDC Rotary
EVAPORATOR FAN	TYPE		BLDC (1) With Sirocco Fan (3)	BLDC (1) With Sirocco Fan (3)
	AIR VOLUME	CFM (L / M / H)	671 / 777 / 883	848 / 989 / 1,165
		TOTAL CFM RANGE	670 - 1,220	848 - 1,510
	STATIC PRESSURE	STANDARD	0.16 in. WC	0.16 in. WC
MIN. / MAX.		0.12 / 0.8 in. WC	0.12 / 0.8 in. WC	
CONDENSER FAN	MOTOR		BLDC With Axial Type Fan (1)	BLDC With Axial Type Fan (2)
	CFM (MAX.)		2,219	3,040
ACCESSORIES	WIRED CONTROLLER	SIMPLIFIED	MWR-SH00N	MWR-SH00N
		SIMPLIFIED TOUCH CONTROLLER	MWR-SH10N	MWR-SH10N
		PREMIUM W/ SCHEDULING	MWR-WE13N	MWR-WE13N
	THERMOSTAT ADAPTER (24VAC)		TADPT2	TADPT2
	WIRELESS SIGNAL CONTROL	WIRELESS SIGNAL RECEIVER	MRK-A10N	MRK-A10N
		WIRELESS CONTROLLER	AR-EH03E	AR-EH03E
	WI-FI ADAPTER		MIM-H03UN	MIM-H03UN
	FILTER BOX		FB-DS2	FB-DS3
	EXTERNAL TEMPERATURE SENSOR		MRW-TA	MRW-TA
	EXTERNAL CONTACT CONTROL		MIM-B14	MIM-B14
	CENTRAL CONTROL INTERFACE MODULE FOR CONNECTION TO DVM PLUS CONTROLS (NON-NASA)		MIM-N01	MIM-N01
	WALL BRACKET (FOR OUTDOOR UNIT)		CKN-250	CKN-250
	WIND BAFFLE/GUARD	FRONT	WBF-2M	WBF-1M2
		BACK	WBB-3M	WBB-2M
	LINE SETS - INSULATED AND FLARED, INTERCONNECT CABLES INCLUDED		25' - ILS2510	25' - ILS2510
		50' - ILS5010	50' - ILS5010	



Product registration required. Conditions apply.



The AHRI Certified® mark indicates Samsung's participation in the AHRI Certification program. For verification of individual certified products, go to www.ahridirectory.org.



*With Wind Baffles

Samsung HVAC maintains a policy of ongoing development, specifications are subject to change without notice.

Intertek

DUCT S

SPECIFICATIONS - 42,000 | 48,000

MODEL	INDOOR UNIT		AC042MNHDC/AA	AC048MNHDC/AA
	OUTDOOR UNIT		AC042JXADCH/AA	AC048JXADCH/AA
PERFORMANCE	CAPACITY	COOLING	42,000 Btu/h	48,000 Btu/h
		HEATING	47,000 Btu/h	53,000 Btu/h
	CAPACITY RANGE	COOLING	16,300 - 45,000 Btu/h	18,600 - 48,000 Btu/h
		HEATING	13,400 - 50,000 Btu/h	15,300 - 55,000 Btu/h
	SEER / EER		19.0 / 9.75	17.8 / 9.15
	COP		3.36	2.98
HSPF		10.2	9.8	
POWER	VOLTAGE	ø / V / Hz	1 / 208-230 / 60	1 / 208-230 / 60
	MAX. BREAKER		40 A	40 A
	MIN. CIRCUIT AMPACITY		26.5 A	26.5 A
DIMENSIONS	W X H X D	INDOOR	51 3/16 X 11 13/16 X 27 9/16 in.	51 3/16 X 11 13/16 X 27 9/16 in.
		OUTDOOR	37 X 48 X 13 in.	37 X 48 X 13 in.
	WEIGHT	INDOOR	99.6 lbs.	99.6 lbs.
		OUTDOOR	194 lbs.	194 lbs.
	DUCT CONNECTIONS	SUPPLY	49 15/16 X 10 5/8 in.	49 15/16 X 10 5/8 in.
		RETURN	49 15/16 X 10 5/8 in.	49 15/16 X 10 5/8 in.
SOUND PRESSURE LEVEL	INDOOR	L / M / H	34 / 37 / 40 dB(A)	37 / 40 / 43 dB(A)
	OUTDOOR	COOLING / HEATING (HIGH)	51 / 53 dB(A)	53 / 55 dB(A)
OPERATING TEMPERATURE	OUTDOOR	COOLING	(0*) 23 ≤ T ≤ 115°F	(0*) 23 ≤ T ≤ 115°F
		HEATING	-4 ≤ T ≤ 76°F	-4 ≤ T ≤ 76°F
PIPE CONNECTIONS	INDOOR & OUTDOOR	HIGH SIDE (FLARE)	3/8 in.	3/8 in.
		LOW SIDE (FLARE)	5/8 in.	5/8 in.
	MAX. LINE SET LENGTH		246 ft.	246 ft.
	MAX. VERTICAL SEPARATION		98 ft.	98 ft.
	CONDENSATE CONNECTION		3/4 in. PVC (with included adapter)	3/4 in. PVC (with included adapter)
REFRIGERANT	TYPE		R410A	R410A
	FACTORY CHARGE		98.77 oz.	98.77 oz.
	CHARGED FOR		25 ft.	25 ft.
COMPRESSOR	TYPE		Inverter Driven, Twin BLDC Rotary	Inverter Driven, Twin BLDC Rotary
EVAPORATOR FAN	TYPE		BLDC (1) With Sirocco Fan (3)	BLDC (1) With Sirocco Fan (3)
	AIR VOLUME	CFM (L / M / H)	1,024 / 1,130 / 1,236	1,059 / 1,165 / 1,271
		TOTAL CFM RANGE	1,024 - 1,620	1,059 - 1,675
	STATIC PRESSURE	STANDARD	0.16 in. WC	0.16 in. WC
MIN. / MAX.		0.12 / 0.8 in. WC	0.12 / 0.8 in. WC	
CONDENSER FAN	MOTOR		BLDC With Axial Type Fan (2)	BLDC With Axial Type Fan (2)
	CFM (MAX.)		3,040	3,040
ACCESSORIES	WIRED CONTROLLER	SIMPLIFIED	MWR-SH00N	MWR-SH00N
		SIMPLIFIED TOUCH CONTROLLER	MWR-SH10N	MWR-SH10N
		PREMIUM W/ SCHEDULING	MWR-WE13N	MWR-WE13N
	THERMOSTAT ADAPTER (24VAC)		TADPT2	TADPT2
	WIRELESS SIGNAL CONTROL	WIRELESS SIGNAL RECEIVER	MRK-A10N	MRK-A10N
		WIRELESS CONTROLLER	AR-EH03E	AR-EH03E
	WI-FI ADAPTER		MIM-H03UN	MIM-H03UN
	FILTER BOX		FB-DS3	FB-DS3
	EXTERNAL TEMPERATURE SENSOR		MRW-TA	MRW-TA
	EXTERNAL CONTACT CONTROL		MIM-B14	MIM-B14
	CENTRAL CONTROL INTERFACE MODULE FOR CONNECTION TO DVM PLUS CONTROLS (NON-NASA)		MIM-N01	MIM-N01
	WALL BRACKET (FOR OUTDOOR UNIT)		CKN-250	CKN-250
	WIND BAFFLE/GUARD	FRONT	WBF-1M2	WBF-1M2
		BACK	WBB-2M	WBB-2M
LINE SETS - INSULATED AND FLARED, INTERCONNECT CABLES INCLUDED		25' - ILS2510	25' - ILS2510	
		50' - ILS5010	50' - ILS5010	



Product registration required. Conditions apply.



The AHRI Certified® mark indicates Samsung's participation in the AHRI Certification program. For verification of individual certified products, go to www.ahridirectory.org.



*With Wind Baffles

Samsung HVAC maintains a policy of ongoing development, specifications are subject to change without notice.

Intertek

DUCT S MAX HEAT™

SPECIFICATIONS - 30,000 | 36,000



MODEL	INDOOR UNIT		AC030MNHDC/AA	AC036MNHDC/AA
	OUTDOOR UNIT		AC030JXSCCH/AA	AC036JXSCCH/AA
PERFORMANCE	CAPACITY	COOLING	30,000 Btu/h	36,000 Btu/h
		HEATING	32,000 Btu/h	40,000 Btu/h
	CAPACITY RANGE	COOLING	14,000 - 36,000 Btu/h	14,000 - 42,000 Btu/h
		HEATING	11,500 - 39,000 Btu/h	12,000 - 48,000 Btu/h
	SEER / EER		19.0 / 11.0	20.0 / 12.20
	COP		3.81	3.34
HSPF		10.1	10.4	
POWER	VOLTAGE	ø / V / Hz	1 / 208-230 / 60	1 / 208-230 / 60
	MAX. BREAKER		45 A	45 A
	MIN. CIRCUIT AMPACITY		32 A	32 A
DIMENSIONS	W X H X D	INDOOR	47 1/4 X 9 13/16 X 27 9/16 in.	51 3/16 X 11 13/16 X 27 9/16 in.
		OUTDOOR	37 X 55 7/8 X 13 in.	37 X 55 7/8 X 13 in.
	WEIGHT	INDOOR	89.3 lbs.	99.6 lbs.
		OUTDOOR	211.6 lbs.	211.6 lbs.
	DUCT CONNECTIONS	SUPPLY	45 15/16 X 8 11/16 in.	49 15/16 X 10 5/8 in.
RETURN		45 15/16 X 8 11/16 in.	49 15/16 X 10 5/8 in.	
SOUND PRESSURE LEVEL	INDOOR	L / M / H	29 / 33 / 37 dB(A)	30 / 34 / 38 dB(A)
	OUTDOOR	COOLING / HEATING (HIGH)	49 / 51 dB(A)	51 / 53 dB(A)
OPERATING TEMPERATURE	OUTDOOR	COOLING	(-4*) 23 ≤ T ≤ 115°F	(-4*) 23 ≤ T ≤ 115°F
		HEATING	-13 ≤ T ≤ 76°F	-13 ≤ T ≤ 76°F
PIPE CONNECTIONS	INDOOR & OUTDOOR	HIGH SIDE (FLARE)	3/8 in.	3/8 in.
		LOW SIDE (FLARE)	5/8 in.	5/8 in.
	MAX. LINE SET LENGTH		246 ft.	246 ft.
	MAX. VERTICAL SEPARATION		98 ft.	98 ft.
CONDENSATE CONNECTION		3/4 in. PVC (with included adapter)	3/4 in. PVC (with included adapter)	
REFRIGERANT	TYPE		R410A	R410A
	FACTORY CHARGE		102.4 oz.	102.4 oz.
	CHARGED FOR		25 ft.	25 ft.
COMPRESSOR	TYPE		Inverter Driven, Twin BLDC Rotary	Inverter Driven, Twin BLDC Rotary
EVAPORATOR FAN	TYPE		BLDC (1) With Sirocco Fan (3)	BLDC (1) With Sirocco Fan (3)
	AIR VOLUME	CFM (L / M / H)	671 / 777 / 883	848 / 989 / 1,165
		TOTAL CFM RANGE	670 - 1,220	848 - 1,510
	STATIC PRESSURE	STANDARD	0.16 in. WC	0.16 in. WC
MIN. / MAX.		0.12 / 0.8 in. WC	0.12 / 0.8 in. WC	
CONDENSER FAN	MOTOR		BLDC With Axial Type Fan (1)	BLDC With Axial Type Fan (2)
	CFM (MAX.)		4,415	4,415
ACCESSORIES	WIRED CONTROLLER	SIMPLIFIED	MWR-SH00N	MWR-SH00N
		SIMPLIFIED TOUCH CONTROLLER	MWR-SH10N	MWR-SH10N
		PREMIUM W/ SCHEDULING	MWR-WE13N	MWR-WE13N
	THERMOSTAT ADAPTER (24VAC)		TADPT2	TADPT2
	WIRELESS SIGNAL CONTROL	WIRELESS SIGNAL RECEIVER	MRK-A10N	MRK-A10N
		WIRELESS CONTROLLER	AR-EH03E	AR-EH03E
	WI-FI ADAPTER		MIM-H03UN	MIM-H03UN
	FILTER BOX		FB-DS2	FB-DS3
	EXTERNAL TEMPERATURE SENSOR		MRW-TA	MRW-TA
	EXTERNAL CONTACT CONTROL		MIM-B14	MIM-B14
	CENTRAL CONTROL INTERFACE MODULE FOR CONNECTION TO DVM PLUS CONTROLS (NON-NASA)		MIM-N01	MIM-N01
	WALL BRACKET (FOR OUTDOOR UNIT)		CKN-250	CKN-250
	WIND BAFFLE/GUARD	FRONT	WBF-6M	WBF-6M
		BACK	WBB-4M	WBB-4M
LINE SETS - INSULATED AND FLARED, INTERCONNECT CABLES INCLUDED		25' - ILS2510	25' - ILS2510	
		50' - ILS5010	50' - ILS5010	



Product registration required. Conditions apply.



The AHRI Certified® mark indicates Samsung's participation in the AHRI Certification program. For verification of individual certified products, go to www.ahridirectory.org.



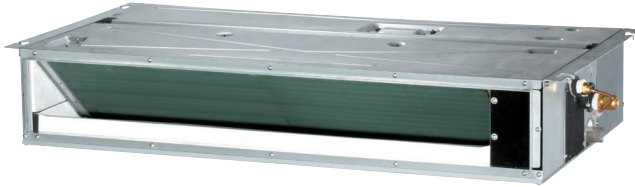
*With Wind Baffles

Samsung HVAC maintains a policy of ongoing development, specifications are subject to change without notice.

Intertek

SLIM DUCT

AVAILABLE CAPACITIES (Btu/h) - 9,000 | 12,000 | 18,000



Model Features

Ultra-Slim Chassis

At 7 7/8", Slim Duct allows installation in the tightest of spaces reducing ceiling height loss and improving aesthetics.

Standard Features¹

7-Day Programming²

Auto Restart

Compatible with DVM S Central Controls

Energy Efficient

Fast Cooling and Heating

Lightweight

Optional Wi-Fi Control Capabilities

Pre Filter

Quiet Mode

Twin Rotary BLDC Compressor

AHRI Certified

ETL Listed

Convenience Features:

- High Lift Drain Pump
- Away Mode²
- Drain Water Overflow Protection

Optional Controllers³

MWR-SH00N

MWR-SH10N

MWR-WE13N

AR-EH03E⁴



WARRANTY

10 YEAR COMPRESSOR | 10 YEAR PARTS | 1 YEAR LIMITED LABOR

Product registration required.

Conditions apply.

*Requires MIM-H03UN Wi-Fi adapter (sold separately)

¹See standard feature details on pages 1-2

²Requires accessory controls (sold separately)

³The Slim Duct system does not include any controllers as standard.


Controllers must be purchased separately; See controller details on page 40

⁴Requires MRK-A10N to use wireless remote controller

Select Models are ENERGY STAR® Labeled.

Proper sizing and installation of equipment is critical to achieve optimal performance. Split system air conditioners and heat pumps (excluding ductless systems) must be matched with appropriate coil components to meet ENERGY STAR® criteria. Ask your contractor for details or visit www.energystar.gov.

SLIM DUCT SPECIFICATIONS - 9,000 | 12,000

MODEL	INDOOR UNIT		AC009KNLDC/AA	AC012KNLDC/AA
	OUTDOOR UNIT		AC009KXADCH/AA	AC012KXADCH/AA
PERFORMANCE	CAPACITY	COOLING	9,000 Btu/h	12,000 Btu/h
		HEATING	12,000 Btu/h	14,000 Btu/h
	CAPACITY RANGE	COOLING	3,200 - 12,000 Btu/h	3,400 - 15,300 Btu/h
		HEATING	2,900 - 14,000 Btu/h	3,000 - 16,200 Btu/h
	SEER / EER		21.0 / 13.95	20.0 / 12.0
COP		2.98	3.16	
HSPF		10.5	10.5	
POWER	VOLTAGE	ø / V / Hz	1 / 208-230 / 60	1 / 208-230 / 60
	MAX. BREAKER		15 A	15 A
	MIN. CIRCUIT AMPACITY		10.6 A	10.6 A
DIMENSIONS	W X H X D	INDOOR	27 9/16 X 7 13/16 X 23 5/8 in.	27 9/16 X 7 13/16 X 23 5/8 in.
		OUTDOOR	31 1/8 X 21 9/16 X 11 1/4 in.	31 1/8 X 21 9/16 X 11 1/4 in.
	WEIGHT	INDOOR	44.0 lbs.	44.0 lbs.
		OUTDOOR	65.0 lbs.	65.0 lbs.
	DUCT CONNECTIONS	SUPPLY	26 X 6 in.	26 X 6 in.
RETURN		22 11/16 X 6 11/16 in.	22 11/16 X 6 11/16 in.	
SOUND PRESSURE LEVEL	INDOOR	L / M / H	26 / 30 / 33 dB(A)	27 / 31 / 34 dB(A)
	OUTDOOR	COOLING / HEATING (HIGH)	46 / 47 dB(A)	47 / 48 dB(A)
OPERATING TEMPERATURE	OUTDOOR	COOLING	(0*) 23 ≤ T ≤ 115°F	(0*) 23 ≤ T ≤ 115°F
		HEATING	-4 ≤ T ≤ 76°F	-4 ≤ T ≤ 76°F
PIPE CONNECTIONS	INDOOR & OUTDOOR	HIGH SIDE (FLARE)	1/4 in.	1/4 in.
		LOW SIDE (FLARE)	3/8 in.	3/8 in.
	MAX. LINE SET LENGTH		65.6 ft.	65.6 ft.
	MAX. VERTICAL SEPARATION		49 ft.	49 ft.
CONDENSATE CONNECTION		1 1/4 in. OD, 1 in. ID	1 1/4 in. OD, 1 in. ID	
REFRIGERANT	TYPE		R410A	R410A
	FACTORY CHARGE		37.04 oz.	37.04 oz.
	CHARGED FOR		25 ft.	25 ft.
COMPRESSOR	TYPE		Inverter Driven, BLDC Rotary	Inverter Driven, BLDC Rotary
EVAPORATOR FAN	TYPE		BLDC (1) With Sirocco Fan (2)	BLDC (1) With Sirocco Fan (2)
	AIR VOLUME	CFM (L / M / H)	283 / 318 / 353	318 / 370 / 425
		TOTAL CFM RANGE	280 - 550	320 - 615
	STATIC PRESSURE	STANDARD	0.1 in. WC	0.1 in. WC
MIN. / MAX.		0.0 / 0.24 in. WC	0.0 / 0.24 in. WC	
CONDENSER FAN	MOTOR		BLDC With Axial Type Fan (1)	BLDC With Axial Type Fan (1)
	CFM (MAX.)		1,271	1,271
ACCESSORIES	WIRED CONTROLLER	SIMPLIFIED	MWR-SH00N	MWR-SH00N
		SIMPLIFIED TOUCH CONTROLLER	MWR-SH10N	MWR-SH10N
		PREMIUM W/ SCHEDULING	MWR-WE13N	MWR-WE13N
	THERMOSTAT ADAPTER (24VAC)		TADPT2	TADPT2
	WIRELESS SIGNAL CONTROL	WIRELESS SIGNAL RECEIVER	MRK-A10N	MRK-A10N
		WIRELESS CONTROLLER	AR-EH03E	AR-EH03E
	WI-FI ADAPTER		MIM-H03UN	MIM-H03UN
	FILTER BOX		FB-SLIM1	FB-SLIM1
	EXTERNAL TEMPERATURE SENSOR		MRW-TA	MRW-TA
	EXTERNAL CONTACT CONTROL		MIM-B14	MIM-B14
	CENTRAL CONTROL INTERFACE MODULE FOR CONNECTION TO DVM PLUS CONTROLS (NON-NASA)		MIM-N01	MIM-N01
	WALL BRACKET (FOR OUTDOOR UNIT)		CKN-250	CKN-250
	WIND BAFFLE/GUARD	FRONT	WBF-3M	WBF-3M
		BACK	WBB-5M	WBB-5M
LINE SETS - INSULATED AND FLARED, INTERCONNECT CABLES INCLUDED		25' - ILS2506	25' - ILS2506	
		50' - ILS5006	50' - ILS5006	
CERTIFICATIONS	ENERGY STAR® CERTIFIED			-



Product registration required. Conditions apply.



The AHRI Certified® mark indicates Samsung's participation in the AHRI Certification program. For verification of individual certified products, go to www.ahridirectory.org.

Select Models are ENERGY STAR® Labeled.

Proper sizing and installation of equipment is critical to achieve performance. Split system air conditioners and heat pumps (excluding ductless systems) must be matched with appropriate coil components to meet ENERGY STAR® criteria. Ask your contractor for details or visit www.energystar.gov.

*With Wind Baffles

Samsung HVAC maintains a policy of ongoing development, specifications are subject to change without notice.



Intertek

SLIM DUCT SPECIFICATIONS - 18,000

MODEL	INDOOR UNIT		AC018KNLDCH/AA
	OUTDOOR UNIT		AC018KXADCH/AA
PERFORMANCE	CAPACITY	COOLING	18,000 Btu/h
		HEATING	20,000 Btu/h
	CAPACITY RANGE	COOLING	5,000 - 21,000 Btu/h
		HEATING	3,800 - 22,000 Btu/h
	SEER / EER		19.5 / 10.7
	COP		2.96
HSPF		9.7	
POWER	VOLTAGE	ø / V / Hz	1 / 208-230 / 60
	MAX. BREAKER		20 A
	MIN. CIRCUIT AMPACITY		12.7 A
DIMENSIONS	W X H X D	INDOOR	35 7/16 X 7 13/16 X 23 5/8 in.
		OUTDOOR	34 5/8 X 25 1/8 X 12 3/16 in.
	WEIGHT	INDOOR	52.03 lbs.
		OUTDOOR	98.1 lbs.
	DUCT CONNECTIONS	SUPPLY	33 7/8 X 6 in.
		RETURN	30 9/16 X 6 11/16 in.
SOUND PRESSURE LEVEL	INDOOR	L / M / H	28 / 32 / 35 dB(A)
	OUTDOOR	COOLING / HEATING (HIGH)	49 / 50 dB(A)
OPERATING TEMPERATURE	OUTDOOR	COOLING	(0°) 23 ≤ T ≤ 115°F
		HEATING	-4 ≤ T ≤ 76°F
PIPE CONNECTIONS	INDOOR & OUTDOOR	HIGH SIDE (FLARE)	1/4 in.
		LOW SIDE (FLARE)	1/2 in.
	MAX. LINE SET LENGTH		98.4 ft.
	MAX. VERTICAL SEPARATION		65.6 ft.
	CONDENSATE CONNECTION		1 1/4 in. OD, 1 in. ID
REFRIGERANT	TYPE		R410A
	FACTORY CHARGE		45.86 oz.
	CHARGED FOR		25 ft.
COMPRESSOR	TYPE		Inverter Driven, Twin BLDC Rotary
EVAPORATOR FAN	TYPE		BLDC (2) With Sirocco Fan (2)
	AIR VOLUME	CFM (L / M / H)	353 / 424 / 495
		TOTAL CFM RANGE	350 - 650
	STATIC PRESSURE	STANDARD	0.1 in. WC
MIN. / MAX.		0.0 / 0.24 in. WC	
CONDENSER FAN	MOTOR		BLDC With Axial Type Fan (1)
	CFM (MAX.)		1,526
ACCESSORIES	WIRED CONTROLLER	SIMPLIFIED	MWR-SH00N
		SIMPLIFIED TOUCH CONTROLLER	MWR-SH10N
		PREMIUM W/ SCHEDULING	MWR-WE13N
	THERMOSTAT ADAPTER (24VAC)		TADPT2
	WIRELESS SIGNAL CONTROL	WIRELESS SIGNAL RECEIVER	MRK-A10N
		WIRELESS CONTROLLER	AR-EH03E
	WI-FI ADAPTER		MIM-H03UN
	FILTER BOX		FB-SLIM2
	EXTERNAL TEMPERATURE SENSOR		MRW-TA
	EXTERNAL CONTACT CONTROL		MIM-B14
	CENTRAL CONTROL INTERFACE MODULE FOR CONNECTION TO DVM PLUS CONTROLS (NON-NASA)		MIM-N01
	WALL BRACKET (FOR OUTDOOR UNIT)		CKN-250
	WIND BAFFLE/GUARD	FRONT	WBF-4M
		BACK	WBB-6M
	LINE SETS - INSULATED AND FLARED, INTERCONNECT CABLES INCLUDED		25' - ILS2507
50' - ILS5007			
CERTIFICATIONS	ENERGY STAR® CERTIFIED		-



Product registration required. Conditions apply.



The AHRI Certified® mark indicates Samsung's participation in the AHRI Certification program. For verification of individual certified products, go to www.ahridirectory.org.



*With Wind Baffles

Samsung HVAC maintains a policy of ongoing development, specifications are subject to change without notice.

Intertek

MULTI-POSITION AIR HANDLER (MPAH)

AVAILABLE CAPACITIES (Btu/h)

STANDARD: 18,000 | 24,000 | 30,000 | 36,000 | 42,000 | 48,000 | 54,000;

MAX HEAT™: 30,000 | 36,000



Available in **MAX HEAT™**

The Multi-Position Air Handler Max Heat™ is equipped with all the features and benefits of the Multi-Position Air Handler, along with the ability to provide 100% heating capacity at 5°F and high heating output at -13°F. The integral base pan heater helps prevent ice buildup during defrost cycles. These added features allow the Multi-Position Air Handler Max Heat™ to perform in a myriad of applications from warm to cold climates everywhere.

- High Heating Operation
- Designed for Cold Climates
- Energy Efficient
- Wi-Fi Compatible
- Quiet Operation
- 10 Year Warranty

Model Features

External Heater

If additional source of heating is required, customers can install an accessory supplemental electric heat kit.

Easy Filter Rack

To raise indoor air quality, a 1" or 2" air filter can be used by attaching an accessory air filter base (for upflow applications). For side discharge, filters are inserted inside the suction plenum.

Standard Features**

7-Day Programming¹
Auto Restart
Compatible with DVM S Central Controls
Energy Efficient

Fast Cooling and Heating
Optional Wi-Fi Control Capabilities
Quiet Mode
Twin Rotary BLDC Compressor

Various Pipe Installation Options²
AHRI Certified
ETL Listed

Convenience Features:

- Away Mode¹
- Optional Supplemental Heat Kits

Optional Controllers³

MWR-WE13N
MWR-SH10N
MWR-SH00N
AR-EH03E⁴



WARRANTY

10 YEAR COMPRESSOR | 10 YEAR PARTS | 1 YEAR LIMITED LABOR

Product registration required.

Conditions apply.

¹Requires MIM-H03UN Wi-Fi adapter (sold separately)

²See standard feature details on pages 1-2

³Requires accessory controls (sold separately)

⁴Excludes 18K model

⁵The Multi-Position Air Handler does not include any controllers as standard.

⁶Requires MRK-A10N to use wireless remote controller

Controllers must be purchased separately; See controller details on page 40

MULTI-POSITION AIR HANDLER

SPECIFICATIONS - 18,000 | 24,000

MODEL	INDOOR UNIT		AC018KNZDCH/AA	AC024KNZDCH/AA
	OUTDOOR UNIT		AC018JXADCH/AA	AC024JXADCH/AA
PERFORMANCE	CAPACITY	COOLING	18,000 Btu/h	24,000 Btu/h
		HEATING	20,000 Btu/h	27,000 Btu/h
	CAPACITY RANGE	COOLING	5,000 - 21,000 Btu/h	7,000 - 27,000 Btu/h
		HEATING	4,400 - 24,000 Btu/h	6,700 - 29,000 Btu/h
	SEER / EER		20.10 / 11.25	19.50 / 11.00
	COP		2.92	3.0
HSPF		10.0	11.5	
POWER	VOLTAGE	ø / V / Hz	1 / 208-230 / 60	1 / 208-230 / 60
	MAX. BREAKER		15 A	20 A
	MIN. CIRCUIT AMPACITY		9.4 A	13.58 A
DIMENSIONS	W X H X D	INDOOR	17 1/2 X 43 X 21 in.	17 1/2 X 43 X 21 in.
		OUTDOOR	34 5/8 X 25 1/8 X 12 1/4 in.	37 X 39 11/16 X 13 in.
	WEIGHT	INDOOR	98.1 lbs.	98.1 lbs.
		OUTDOOR	99 lbs.	142 lbs.
SOUND PRESSURE LEVEL	INDOOR	L / M / H	32 / 35 / 38 dB(A)	35 / 38 / 41 dB(A)
	OUTDOOR	COOLING / HEATING (HIGH)	48 / 48 dB(A)	50 / 50 dB(A)
OPERATING TEMPERATURE	OUTDOOR	COOLING	(0*) 23 ≤ T ≤ 115°F	(0*) 23 ≤ T ≤ 115°F
		HEATING	-4 ≤ T ≤ 76°F	-4 ≤ T ≤ 76°F
PIPE CONNECTIONS	INDOOR & OUTDOOR	HIGH SIDE (FLARE)	1/4 in.	1/4 in.
		LOW SIDE (FLARE)	1/2 in.	5/8 in.
	MAX. LINE SET LENGTH		98 ft.	164 ft.
	MAX. VERTICAL SEPARATION		66 ft.	98 ft.
CONDENSATE CONNECTION		3/4 in. FNPT	3/4 in. FNPT	
REFRIGERANT	TYPE		R410A	R410A
	FACTORY CHARGE		45.86 oz.	74.08 oz.
	CHARGED FOR		25 ft.	25 ft.
COMPRESSOR	TYPE		Inverter Driven, Twin BLDC Rotary	Inverter Driven, Twin BLDC Rotary
EVAPORATOR FAN	TYPE		Double-inlet, forward curve, centrifugal (with ECM motor)	Double-inlet, forward curve, centrifugal (with ECM motor)
	AIR VOLUME	CFM (L / M / H)	495 / 530 / 600	547 / 635 / 760
		TOTAL CFM RANGE	130 - 682	262 - 888
	STATIC PRESSURE	STANDARD	0.2 in. WC	0.2 in. WC
MIN. / MAX.		0.0 / 0.8 in. WC	0.0 / 0.8 in. WC	
CONDENSER FAN	MOTOR		BLDC With Axial Type Fan (1)	BLDC With Axial Type Fan (1)
	CFM (MAX.)		1,550	2,190
ACCESSORIES	WIRED CONTROLLER	SIMPLIFIED	MWR-SH00N	MWR-SH00N
		SIMPLIFIED TOUCH CONTROLLER	MWR-SH10N	MWR-SH10N
		PREMIUM W/ SCHEDULING	MWR-WE13N	MWR-WE13N
	THERMOSTAT ADAPTER (24VAC)		TADPT2	TADPT2
	WIRELESS SIGNAL CONTROL	WIRELESS SIGNAL RECEIVER	MRK-A10N	MRK-A10N
		WIRELESS CONTROLLER	AR-EH03E	AR-EH03E
	WI-FI ADAPTER		MIM-H03UN	MIM-H03UN
	FILTER BOX (INCLUDES 1 in. MERV 8 FILTER)		VFB-1	VFB-1
	SUPPLEMENTAL ELECTRIC HEAT KIT	MODEL NUMBER	VHK-103A (3 kW)	VHK-103A (3 kW)
			VHK-105A (5 kW)	VHK-105A (5 kW)
	EXTERNAL TEMPERATURE SENSOR		MRW-TA	MRW-TA
	EXTERNAL CONTACT CONTROL		MIM-B14	MIM-B14
	CENTRAL CONTROL INTERFACE MODULE FOR CONNECTION TO DVM PLUS CONTROLS (NON-NASA)		MIM-N01	MIM-N01
	WALL BRACKET (FOR OUTDOOR UNIT)		CKN-250	CKN-250
	WIND BAFFLE/GUARD	FRONT	WBF-4M	WBF-2M
		BACK	WBB-6M	WBB-3M
LINE SETS - INSULATED AND FLARED, INTERCONNECT CABLES INCLUDED		25' - ILS2507	25' - ILS2509	
		50' - ILS5007	50' - ILS5009	



Product registration required. Conditions apply.



The AHRI Certified® mark indicates Samsung's participation in the AHRI Certification program. For verification of individual certified products, go to www.ahridirectory.org.



*With Wind Baffles

Samsung HVAC maintains a policy of ongoing development, specifications are subject to change without notice.

Intertek

MULTI-POSITION AIR HANDLER

SPECIFICATIONS - 30,000 | 36,000

MODEL	INDOOR UNIT		AC030KNZDCH/AA	AC036KNZDCH/AA
	OUTDOOR UNIT		AC030JXADCH/AA	AC036JXADCH/AA
PERFORMANCE	CAPACITY	COOLING	30,000 Btu/h	36,000 Btu/h
		HEATING	32,000 Btu/h	40,000 Btu/h
	CAPACITY RANGE	COOLING	9,3000 - 35,000 Btu/h	14,000 - 39,000 Btu/h
		HEATING	9,000 - 38,000 Btu/h	12,000 - 43,000 Btu/h
	SEER / EER		19.60 / 10.15	19.00 / 11.40
	COP		3.33	3.24
HSPF		10.4	10.2	
POWER	VOLTAGE	ø / V / Hz	1 / 208-230 / 60	1 / 208-230 / 60
	MAX. BREAKER		35 A	40 A
	MIN. CIRCUIT AMPACITY		21.71 A	26.36 A
DIMENSIONS	W X H X D	INDOOR	21 X 48 X 21 in.	21 X 48 X 21 in.
		OUTDOOR	37 X 39 11/16 X 13 in.	37 X 48 X 13 in.
	WEIGHT	INDOOR	123.46 lbs.	123.46 lbs.
		OUTDOOR	154 lbs.	194 lbs.
SOUND PRESSURE LEVEL	INDOOR	L / M / H	35 / 38 / 41 dB(A)	36 / 39 / 42 dB(A)
	OUTDOOR	COOLING / HEATING (HIGH)	50 / 52 dB(A)	49 / 51 dB(A)
OPERATING TEMPERATURE	OUTDOOR	COOLING	(0*) 23 ≤ T ≤ 115°F	(0*) 23 ≤ T ≤ 115°F
		HEATING	-4 ≤ T ≤ 76°F	-4 ≤ T ≤ 76°F
PIPE CONNECTIONS	INDOOR & OUTDOOR	HIGH SIDE (FLARE)	3/8 in.	3/8 in.
		LOW SIDE (FLARE)	5/8 in.	5/8 in.
	MAX. LINE SET LENGTH		164 ft.	246 ft.
	MAX. VERTICAL SEPARATION		98 ft.	98 ft.
	CONDENSATE CONNECTION		3/4 in. FNPT	3/4 in. FNPT
REFRIGERANT	TYPE		R410A	R410A
	FACTORY CHARGE		91.71 oz.	98.77 oz.
	CHARGED FOR		25 ft.	25 ft.
COMPRESSOR	TYPE		Inverter Driven, Twin BLDC Rotary	Inverter Driven, Twin BLDC Rotary
EVAPORATOR FAN	TYPE		Double-inlet, forward curve, centrifugal (with ECM motor)	Double-inlet, forward curve, centrifugal (with ECM motor)
	AIR VOLUME	CFM (L / M / H)	847 / 918 / 1,006	883 / 1,042 / 1,165
		TOTAL CFM RANGE	419 - 1,314	419 - 1,314
	STATIC PRESSURE	STANDARD	0.24 in. WC	0.24 in. WC
MIN. / MAX.		0.0 / 1.0 in. WC	0.0 / 1.0 in. WC	
CONDENSER FAN	MOTOR		BLDC With Axial Type Fan (1)	BLDC With Axial Type Fan (2)
	CFM (MAX.)		2,219	3,040
ACCESSORIES	WIRED CONTROLLER	SIMPLIFIED	MWR-SH00N	MWR-SH00N
		SIMPLIFIED TOUCH CONTROLLER	MWR-SH10N	MWR-SH10N
		PREMIUM W/ SCHEDULING	MWR-WE13N	MWR-WE13N
	THERMOSTAT ADAPTER (24VAC)		TADPT2	TADPT2
	WIRELESS SIGNAL CONTROL	WIRELESS SIGNAL RECEIVER	MRK-A10N	MRK-A10N
		WIRELESS CONTROLLER	AR-EH03E	AR-EH03E
	WI-FI ADAPTER		MIM-H03UN	MIM-H03UN
	FILTER BOX (INCLUDES 1 in. MERV 8 FILTER)		VFB-2	VFB-2
	SUPPLEMENTAL ELECTRIC HEAT KIT	MODEL NUMBER	VHK-205A (5 kW)	VHK-205A (5 kW)
			VHK-210A (10 kW)	VHK-210A (10 kW)
	EXTERNAL TEMPERATURE SENSOR		MRW-TA	MRW-TA
	EXTERNAL CONTACT CONTROL		MIM-B14	MIM-B14
	CENTRAL CONTROL INTERFACE MODULE FOR CONNECTION TO DVM PLUS CONTROLS (NON-NASA)		MIM-N01	MIM-N01
	WALL BRACKET (FOR OUTDOOR UNIT)		CKN-250	CKN-250
	WIND BAFFLE/GUARD	FRONT	WBF-2M	WBF-1M2
BACK		WBB-3M	WBB-2M	
LINE SETS - INSULATED AND FLARED, INTERCONNECT CABLES INCLUDED		25' - ILS2510	25' - ILS2510	
		50' - ILS5010	50' - ILS5010	



Product registration required. Conditions apply.



The AHRI Certified® mark indicates Samsung's participation in the AHRI Certification program. For verification of individual certified products, go to www.ahridirectory.org.



*With Wind Baffles

Samsung HVAC maintains a policy of ongoing development, specifications are subject to change without notice.

Intertek

MULTI-POSITION AIR HANDLER

SPECIFICATIONS - 42,000 | 48,000

MODEL	INDOOR UNIT		AC042KNZDCH/AA	AC048KNZDCH/AA
	OUTDOOR UNIT		AC042JXADCH/AA	AC048JXADCH/AA
PERFORMANCE	CAPACITY	COOLING	42,000 Btu/h	48,000 Btu/h
		HEATING	47,000 Btu/h	53,000 Btu/h
	CAPACITY RANGE	COOLING	17,000 - 44,000 Btu/h	19,000 - 50,000 Btu/h
		HEATING	14,000 - 49,000 Btu/h	16,000 - 55,000 Btu/h
	SEER / EER		18.40 / 10.15	18.00 / 9.60
	COP		3.26	3.14
HSPF		9.6	9.7	
POWER	VOLTAGE	ø / V / Hz	1 / 208-230 / 60	1 / 208-230 / 60
	MAX. BREAKER		40 A	40 A
	MIN. CIRCUIT AMPACITY		26.36 A	26.36 A
DIMENSIONS	W X H X D	INDOOR	24 1/2 X 58 3/4 X 21 3/4 in.	24 1/2 X 58 3/4 X 21 3/4 in.
		OUTDOOR	37 X 48 X 13 in.	37 X 48 X 13 in.
	WEIGHT	INDOOR	163.14 lbs.	163.14 lbs.
		OUTDOOR	194 lbs.	194 lbs.
SOUND PRESSURE LEVEL	INDOOR	L / M / H	36 / 39 / 42 dB(A)	38 / 41 / 43 dB(A)
	OUTDOOR	COOLING / HEATING (HIGH)	51 / 53 dB(A)	53 / 55 dB(A)
OPERATING TEMPERATURE	OUTDOOR	COOLING	(0°) 23 ≤ T ≤ 115°F	(0°) 23 ≤ T ≤ 115°F
		HEATING	-4 ≤ T ≤ 76°F	-4 ≤ T ≤ 76°F
PIPE CONNECTIONS	INDOOR & OUTDOOR	HIGH SIDE (FLARE)	3/8 in.	3/8 in.
		LOW SIDE (FLARE)	5/8 in.	5/8 in.
	MAX. LINE SET LENGTH		246 ft.	246 ft.
	MAX. VERTICAL SEPARATION		98 ft.	98 ft.
CONDENSATE CONNECTION		3/4 in. FNPT	3/4 in. FNPT	
REFRIGERANT	TYPE		R410A	R410A
	FACTORY CHARGE		98.77 oz.	98.77 oz.
	CHARGED FOR		25 ft.	25 ft.
COMPRESSOR	TYPE		Inverter Driven, Twin BLDC Rotary	Inverter Driven, Twin BLDC Rotary
EVAPORATOR FAN	TYPE		Double-inlet, forward curve, centrifugal (with ECM motor)	Double-inlet, forward curve, centrifugal (with ECM motor)
	AIR VOLUME	CFM (L / M / H)	1,060 / 1,165 / 1,271	1,130 / 1,271 / 1,413
		TOTAL CFM RANGE	620 - 1,315	415 - 1,739
	STATIC PRESSURE	STANDARD	0.28 in. WC	0.28 in. WC
MIN. / MAX.		0.1 / 1.0 in. WC	0.1 / 1.0 in. WC	
CONDENSER FAN	MOTOR		BLDC With Axial Type Fan (2)	BLDC With Axial Type Fan (2)
	CFM (MAX.)		3,040	3,040
ACCESSORIES	WIRED CONTROLLER	SIMPLIFIED	MWR-SH00N	MWR-SH00N
		SIMPLIFIED TOUCH CONTROLLER	MWR-SH10N	MWR-SH10N
		PREMIUM W/ SCHEDULING	MWR-WE13N	MWR-WE13N
	THERMOSTAT ADAPTER (24VAC)		TADPT2	TADPT2
	WIRELESS SIGNAL CONTROL	WIRELESS SIGNAL RECEIVER	MRK-A10N	MRK-A10N
		WIRELESS CONTROLLER	AR-EH03E	AR-EH03E
	WI-FI ADAPTER		MIM-H03UN	MIM-H03UN
	FILTER BOX (INCLUDES 1 in. MERV 8 FILTER)		VFB-3	VFB-3
	SUPPLEMENTAL ELECTRIC HEAT KIT	MODEL NUMBER	VHK-305A (5 kW)	VHK-305A (5 kW)
			VHK-310A (10 kW)	VHK-310A (10 kW)
	EXTERNAL TEMPERATURE SENSOR		MRW-TA	MRW-TA
	EXTERNAL CONTACT CONTROL		MIM-B14	MIM-B14
	CENTRAL CONTROL INTERFACE MODULE FOR CONNECTION TO DVM PLUS CONTROLS (NON-NASA)		MIM-N01	MIM-N01
	WALL BRACKET (FOR OUTDOOR UNIT)		CKN-250	CKN-250
	WIND BAFFLE/GUARD	FRONT	WBF-1M2	WBF-1M2
BACK		WBB-2M	WBB-2M	
LINE SETS - INSULATED AND FLARED, INTERCONNECT CABLES INCLUDED		25' - ILS2510	25' - ILS2510	
		50' - ILS5010	50' - ILS5010	



Product registration required. Conditions apply.



The AHRI Certified® mark indicates Samsung's participation in the AHRI Certification program. For verification of individual certified products, go to www.ahridirectory.org.



*With Wind Baffles

Samsung HVAC maintains a policy of ongoing development, specifications are subject to change without notice.

Intertek

MULTI-POSITION AIR HANDLER

SPECIFICATIONS - 54,000

MODEL	INDOOR UNIT		AC054KNZDCH/AA
	OUTDOOR UNIT		AC054KXADCH/AA
PERFORMANCE	CAPACITY	COOLING	54,000 Btu/h
		HEATING	60,000 Btu/h
	CAPACITY RANGE	COOLING	21,000 - 55,000 Btu/h
		HEATING	21,000 - 62,000 Btu/h
	SEER / EER		17.10 / 8.05
	COP		3.03
HSPF		9	
POWER	VOLTAGE	ø / V / Hz	1 / 208-230 / 60
	MAX. BREAKER		70 A
	MIN. CIRCUIT AMPACITY		41.64 A
DIMENSIONS	W X H X D	INDOOR	24 1/2 X 58 3/4 X 21 3/4 in.
		OUTDOOR	37 X 56 X 13 in.
	WEIGHT	INDOOR	163.14 lbs.
		OUTDOOR	211.6 lbs.
SOUND PRESSURE LEVEL	INDOOR	L / M / H	39 / 42 / 45 dB(A)
	OUTDOOR	COOLING / HEATING (HIGH)	56 / 56 dB(A)
OPERATING TEMPERATURE	OUTDOOR	COOLING	(0*) 23 ≤ T ≤ 115°F
		HEATING	-4 ≤ T ≤ 76°F
PIPE CONNECTIONS	INDOOR & OUTDOOR	HIGH SIDE (FLARE)	3/8 in.
		LOW SIDE (FLARE)	3/4 in.
	MAX. LINE SET LENGTH		246 ft.
	MAX. VERTICAL SEPARATION		98 ft.
	CONDENSATE CONNECTION		3/4 in. FNPT
REFRIGERANT	TYPE		R410A
	FACTORY CHARGE		123.52 oz.
	CHARGED FOR		25 ft.
COMPRESSOR	TYPE		Inverter Driven, Twin BLDC Rotary
EVAPORATOR FAN	TYPE		Double-inlet, forward curve, centrifugal (with ECM motor)
	AIR VOLUME	CFM (L / M / H)	1,342 / 1,501 / 1,890
		TOTAL CFM RANGE	370 - 2,000
	STATIC PRESSURE	STANDARD	0.28 in. WC
MIN. / MAX.		0.1 / 1.0 in. WC	
CONDENSER FAN	MOTOR		BLDC With Axial Type Fan (2)
	CFM (MAX.)		5,160
ACCESSORIES	WIRED CONTROLLER	SIMPLIFIED	MWR-SH00N
		SIMPLIFIED TOUCH CONTROLLER	MWR-SH10N
		PREMIUM W/ SCHEDULING	MWR-WE13N
	THERMOSTAT ADAPTER (24VAC)		TADPT2
	WIRELESS SIGNAL CONTROL	WIRELESS SIGNAL RECEIVER	MRK-A10N
		WIRELESS CONTROLLER	AR-EH03E
	WI-FI ADAPTER		MIM-H03UN
	FILTER BOX (INCLUDES 1 in. MERV 8 FILTER)		VFB-3
	SUPPLEMENTAL ELECTRIC HEAT KIT	MODEL NUMBER	VHK-305A (5 kW)
			VHK-310A (10 kW)
	VHK-315A (15 kW)		
	EXTERNAL TEMPERATURE SENSOR		MRW-TA
	EXTERNAL CONTACT CONTROL		MIM-B14
	CENTRAL CONTROL INTERFACE MODULE FOR CONNECTION TO DVM PLUS CONTROLS (NON-NASA)		MIM-N01
	WALL BRACKET (FOR OUTDOOR UNIT)		CKN-250
WIND BAFFLE/GUARD	FRONT	WBF-6M	
	BACK	WBB-4M	
LINE SETS - INSULATED AND FLARED, INTERCONNECT CABLES INCLUDED		-	



Product registration required. Conditions apply.



The AHRI Certified® mark indicates Samsung's participation in the AHRI Certification program. For verification of individual certified products, go to www.ahridirectory.org.



*With Wind Baffles

Samsung HVAC maintains a policy of ongoing development, specifications are subject to change without notice.

Intertek

MULTI-POSITION AIR HANDLER MAX HEAT™

SPECIFICATIONS - 30,000 | 36,000



MODEL	INDOOR UNIT		AC030KNZDCH/AA	AC036KNZDCH/AA
	OUTDOOR UNIT		AC030JXSCCH/AA	AC036JXSCCH/AA
PERFORMANCE	CAPACITY	COOLING	30,000 Btu/h	36,000 Btu/h
		HEATING	32,000 Btu/h	40,000 Btu/h
	CAPACITY RANGE	COOLING	14,000 - 36,000 Btu/h	14,000 - 42,000 Btu/h
		HEATING	11,500 - 39,000 Btu/h	12,000 - 48,000 Btu/h
	SEER / EER		20.3 / 12.2	20.0 / 11.0
	COP		3.45	3.32
HSPF		10.6	10.4	
POWER	VOLTAGE	ø / V / Hz	1 / 208-230 / 60	1 / 208-230 / 60
	MAX. BREAKER		45 A	45 A
	MIN. CIRCUIT AMPACITY		32 A	32 A
DIMENSIONS	W X H X D	INDOOR	21 X 48 X 21 in.	21 X 48 X 21 in.
		OUTDOOR	37 X 55 7/8 X 13 in.	37 X 55 7/8 X 13 in.
	WEIGHT	INDOOR	123.5 lbs.	123.5 lbs.
		OUTDOOR	211.64 lbs.	211.64 lbs.
SOUND PRESSURE LEVEL	INDOOR	L / M / H	35 / 38 / 41 dB(A)	36 / 39 / 42 dB(A)
	OUTDOOR	COOLING / HEATING (HIGH)	49 / 50 dB(A)	51 / 53 dB(A)
OPERATING TEMPERATURE	OUTDOOR	COOLING	(-4*) 23 ≤ T ≤ 115°F	(-4*) 23 ≤ T ≤ 115°F
		HEATING	-13 ≤ T ≤ 76°F	-13 ≤ T ≤ 76°F
PIPE CONNECTIONS	INDOOR & OUTDOOR	HIGH SIDE (FLARE)	3/8 in.	3/8 in.
		LOW SIDE (FLARE)	5/8 in.	5/8 in.
	MAX. LINE SET LENGTH		246 ft.	246 ft.
	MAX. VERTICAL SEPARATION		98 ft.	98 ft.
CONDENSATE CONNECTION		3/4 in. FNPT	3/4 in. FNPT	
REFRIGERANT	TYPE		R410A	R410A
	FACTORY CHARGE		102.29 oz.	102.29 oz.
	CHARGED FOR		25 ft.	25 ft.
COMPRESSOR	TYPE		Inverter Driven, Twin BLDC Rotary	Inverter Driven, Twin BLDC Rotary
EVAPORATOR FAN	TYPE		Double-inlet, forward curve, centrifugal (with ECM motor)	Double-inlet, forward curve, centrifugal (with ECM motor)
	AIR VOLUME	CFM (L / M / H)	848 / 918 / 1,007	883 / 1,042 / 1,165
		TOTAL CFM RANGE	419 - 1,314	419 - 1,314
	STATIC PRESSURE	STANDARD	0.24 in. WC	0.24 in. WC
MIN. / MAX.		0.0 / 1.0 in. WC	0.0 / 1.0 in. WC	
CONDENSER FAN	MOTOR		BLDC With Axial Type Fan (2)	BLDC With Axial Type Fan (2)
	CFM (MAX.)		4,415	4,415
ACCESSORIES	WIRED CONTROLLER	SIMPLIFIED	MWR-SH00N	MWR-SH00N
		SIMPLIFIED TOUCH CONTROLLER	MWR-SH10N	MWR-SH10N
		PREMIUM W/ SCHEDULING	MWR-WE13N	MWR-WE13N
	THERMOSTAT ADAPTER (24VAC)		TADPT2	TADPT2
	WIRELESS SIGNAL CONTROL	WIRELESS SIGNAL RECEIVER	MRK-A10N	MRK-A10N
		WIRELESS CONTROLLER	AR-EH03E	AR-EH03E
	WI-FI ADAPTER		MIM-H03UN	MIM-H03UN
	FILTER BOX (INCLUDES 1 in. MERV 8 FILTER)		VFB-2	VFB-2
	SUPPLEMENTAL ELECTRIC HEAT KIT	MODEL NUMBER	VHK-205A (5 kW)	VHK-205A (5 kW)
			VHK-210A (10 kW)	VHK-210A (10 kW)
	EXTERNAL TEMPERATURE SENSOR		MRW-TA	MRW-TA
	EXTERNAL CONTACT CONTROL		MIM-B14	MIM-B14
	CENTRAL CONTROL INTERFACE MODULE FOR CONNECTION TO DVM PLUS CONTROLS (NON-NASA)		MIM-N01	MIM-N01
	WALL BRACKET (FOR OUTDOOR UNIT)		CKN-250	CKN-250
	WIND BAFFLE/GUARD	FRONT	WBF-6M	WBF-6M
BACK		WBB-4M	WBB-4M	
LINE SETS - INSULATED AND FLARED, INTERCONNECT CABLES INCLUDED		25' - ILS2510	25' - ILS2510	
		50' - ILS5010	50' - ILS5010	



Product registration required. Conditions apply.



The AHRI Certified® mark indicates Samsung's participation in the AHRI Certification program. For verification of individual certified products, go to www.ahridirectory.org.



*With Wind Baffles

Samsung HVAC maintains a policy of ongoing development, specifications are subject to change without notice.



HIGH WALL

AVAILABLE CAPACITIES (Btu/h) - 12,000 | 18,000 | 24,000 | 30,000 | 36,000



12K, 18K & 24K MODELS



30K & 36K MODELS

Model Features

Easy Filter Cleaning

After 1,000 hours of operation, the 'filter clean' indicator will notify you that the filter should be cleaned. (1000 hours is the default set time, but it can be adjusted to 2,000.)

Longer Pipe Lengths

As compared to standard residential systems

Standard Features**

7-Day Programming¹

Auto Restart

Compatible with DVM S Central Controls

Energy Efficient

Fast Cooling and Heating

FMC (Flat Micro-Channel

Condenser Coil)²

Lightweight

Optional Wi-Fi Control Capabilities

Pre Filter

Quiet Mode

Twin Rotary BLDC Compressor²

Various Pipe Installation Options²

AHRI Certified

ETL Listed

Convenience Features:

- Away Mode¹
- Wide Operating Range (Outside Temperature)

Optional Controllers³

MWR-SH00N

MWR-SH10N

MWR-WEI3N

AR-EH03E



WARRANTY

10 YEAR COMPRESSOR | 10 YEAR PARTS | 1 YEAR LIMITED LABOR

Product registration required.

Conditions apply.

*Requires MIM-H03UN Wi-Fi adapter (sold separately)

**See standard feature details on pages 1-2

¹ Requires accessory controls (sold separately)

² Excludes 12K model

³ The High Wall system does not include any controllers as standard.

Controllers must be purchased separately; See controller details on page 40

HIGH WALL

SPECIFICATIONS - 12,000 | 18,000

MODEL	INDOOR UNIT		AC012MNADCH/AA	AC018MNADCH/AA
	OUTDOOR UNIT		AC012KXADCH/AA	AC018JXADCH/AA
PERFORMANCE	CAPACITY	COOLING	12,000 Btu/h	18,000 Btu/h
		HEATING	14,000 Btu/h	20,000 Btu/h
	CAPACITY RANGE	COOLING	3,400 - 14,500 Btu/h	4,000 - 20,000 Btu/h
		HEATING	3,000 - 16,200 Btu/h	3,800 - 25,000 Btu/h
	SEER / EER		18.0 / 9.85	18.8 / 8.35
	COP		2.44	2.98
HSPF		9.5	10.0	
POWER	VOLTAGE	ø / V / Hz	1 / 208-230 / 60	1 / 208-230 / 60
	MAX. BREAKER		15 A	15 A
	MIN. CIRCUIT AMPACITY		10.7 A	10 A
DIMENSIONS	W X H X D	INDOOR	29 1/2 X 9 11/16 X 9 13/16 in.	34 1/4 X 10 1/4 X 10 1/4 in.
		OUTDOOR	31 1/8 X 21 9/16 X 11 1/4 in.	34 5/8 X 25 1/8 X 12 1/4 in.
	WEIGHT	INDOOR	16.8 lbs.	23.81 lbs.
		OUTDOOR	65.0 lbs.	99 lbs.
SOUND PRESSURE LEVEL	INDOOR	L / M / H	26 / 32 / 38 dB(A)	32 / 37 / 42 dB(A)
	OUTDOOR	COOLING / HEATING (HIGH)	46 / 47 dB(A)	48 / 48 dB(A)
OPERATING TEMPERATURE	OUTDOOR	COOLING	(0*) 23 ≤ T ≤ 115°F	(0*) 23 ≤ T ≤ 115°F
		HEATING	-4 ≤ T ≤ 76°F	-4 ≤ T ≤ 76°F
PIPE CONNECTIONS	INDOOR & OUTDOOR	HIGH SIDE (FLARE)	1/4 in.	1/4 in.
		LOW SIDE (FLARE)	3/8 in.	1/2 in.
	MAX. LINE SET LENGTH		65.6 ft.	98 ft.
	MAX. VERTICAL SEPARATION		49 ft.	66 ft.
CONDENSATE CONNECTION		11/16 in. OD	11/16 in. OD	
REFRIGERANT	TYPE		R410A	R410A
	FACTORY CHARGE		37.04 oz.	45.86 oz.
	CHARGED FOR		25 ft.	25 ft.
COMPRESSOR	TYPE		Inverter Driven, Twin BLDC Rotary	Inverter Driven, Twin BLDC Rotary
EVAPORATOR FAN	TYPE		BLDC With Crossflow Fan (1)	BLDC With Crossflow Fan (1)
	AIR VOLUME	CFM (L / M / H)	194 / 247 / 300	265 / 336 / 406
CONDENSER FAN	MOTOR		BLDC With Axial Type Fan (1)	BLDC With Axial Type Fan (1)
	CFM (MAX.)		1,271	1,550
ACCESSORIES	WIRED CONTROLLER	SIMPLIFIED	MWR-SH00N	MWR-SH00N
		SIMPLIFIED TOUCH CONTROLLER	MWR-SH10N	MWR-SH10N
		PREMIUM W/ SCHEDULING	MWR-WE13N	MWR-WE13N
	THERMOSTAT ADAPTER (24VAC)		TADPT2	TADPT2
	WIRELESS CONTROLLER		AR-EH03E	AR-EH03E
	WI-FI ADAPTER		MIM-H03UN	MIM-H03UN
	EXTERNAL TEMPERATURE SENSOR		MRW-TA	MRW-TA
	EXTERNAL CONTACT CONTROL		MIM-B14	MIM-B14
	CENTRAL CONTROL INTERFACE MODULE FOR CONNECTION TO DVM PLUS CONTROLS (NON-NASA)		MIM-N01	MIM-N01
	WALL BRACKET (FOR OUTDOOR UNIT)		CKN-250	CKN-250
	WIND BAFFLE/GUARD	FRONT	WBF-3M	WBF-4M
		BACK	WBB-5M	WBB-6M
	LINE SETS - INSULATED AND FLARED, INTERCONNECT CABLES INCLUDED		25' - ILS2506	25' - ILS2507
50' - ILS5006			50' - ILS5007	



Product registration required. Conditions apply.



The AHRI Certified® mark indicates Samsung's participation in the AHRI Certification program. For verification of individual certified products, go to www.ahridirectory.org.



*With Wind Baffles

Samsung HVAC maintains a policy of ongoing development, specifications are subject to change without notice.

Intertek

HIGH WALL

SPECIFICATIONS - 24,000 | 30,000

MODEL	INDOOR UNIT		AC024MNADCH/AA	AC030MNTDCH/AA
	OUTDOOR UNIT		AC024JXADCH/AA	AC030JXADCH/AA
PERFORMANCE	CAPACITY	COOLING	24,000 Btu/h	30,000 Btu/h
		HEATING	27,000 Btu/h	32,000 Btu/h
	CAPACITY RANGE	COOLING	7,000 - 27,000 Btu/h	9,300 - 35,000 Btu/h
		HEATING	5,200 - 31,000 Btu/h	9,000 - 38,000 Btu/h
	SEER / EER		18.3 / 10.2	19.5 / 9.5
	COP		3.08	2.78
HSPF		10.8	9.2	
POWER	VOLTAGE	ø / V / Hz	1 / 208-230 / 60	1 / 208-230 / 60
	MAX. BREAKER		20 A	30 A
	MIN. CIRCUIT AMPACITY		12.5 A	20.3 A
DIMENSIONS	W X H X D	INDOOR	41 15/16 X 11 9/16 X 11 7/8 in.	50 3/8 X 9 15/16 X 13 9/16 in.
		OUTDOOR	37 X 39 11/16 X 12 3/4 in.	37 X 39 11/16 X 12 3/4 in.
	WEIGHT	INDOOR	32.19 lbs.	40.57 lbs.
		OUTDOOR	142 lbs.	154 lbs.
SOUND PRESSURE LEVEL	INDOOR	L / M / H	35 / 39 / 43 dB(A)	45 / 47 / 49 dB(A)
	OUTDOOR	COOLING / HEATING (HIGH)	50 / 50 dB(A)	50 / 52 dB(A)
OPERATING TEMPERATURE	OUTDOOR	COOLING	(0*) 23 ≤ T ≤ 115°F	(0*) 23 ≤ T ≤ 115°F
		HEATING	-4 ≤ T ≤ 76°F	-4 ≤ T ≤ 76°F
PIPE CONNECTIONS	INDOOR & OUTDOOR	HIGH SIDE (FLARE)	1/4 in.	3/8 in.
		LOW SIDE (FLARE)	5/8 in.	5/8 in.
	MAX. LINE SET LENGTH		164 ft.	164 ft.
	MAX. VERTICAL SEPARATION		98 ft.	98 ft.
CONDENSATE CONNECTION		11/16 in. OD	11/16 in. OD	
REFRIGERANT	TYPE		R410A	R410A
	FACTORY CHARGE		74.08 oz.	91.71 oz.
	CHARGED FOR		25 ft.	25 ft.
COMPRESSOR	TYPE		Inverter Driven, Twin BLDC Rotary	Inverter Driven, Twin BLDC Rotary
EVAPORATOR FAN	TYPE		BLDC With Crossflow Fan (1)	BLDC With Crossflow Fan (1)
	AIR VOLUME	CFM (L / M / H)	410 / 477 / 551	671 / 724 / 777
CONDENSER FAN	MOTOR		BLDC With Axial Type Fan (1)	BLDC With Axial Type Fan (1)
	CFM (MAX.)		2,190	2,221
ACCESSORIES	WIRED CONTROLLER	SIMPLIFIED	MWR-SH00N	MWR-SH00N
		SIMPLIFIED TOUCH CONTROLLER	MWR-SH10N	MWR-SH10N
		PREMIUM W/ SCHEDULING	MWR-WE13N	MWR-WE13N
	THERMOSTAT ADAPTER (24VAC)		TADPT2	TADPT2
	WIRELESS CONTROLLER		AR-EH03E	AR-EH03E
	WI-FI ADAPTER		MIM-H03UN	MIM-H03UN
	EXTERNAL TEMPERATURE SENSOR		MRW-TA	MRW-TA
	EXTERNAL CONTACT CONTROL		MIM-B14	MIM-B14
	CENTRAL CONTROL INTERFACE MODULE FOR CONNECTION TO DVM PLUS CONTROLS (NON-NASA)		MIM-NO1	MIM-NO1
	WALL BRACKET (FOR OUTDOOR UNIT)		CKN-250	CKN-250
	WIND BAFFLE/GUARD	FRONT	WBF-2M	WBF-2M
		BACK	WBB-3M	WBB-3M
	LINE SETS - INSULATED AND FLARED, INTERCONNECT CABLES INCLUDED		25' - ILS2509	25' - ILS2510
			50' - ILS5009	50' - ILS5010



Product registration required. Conditions apply.



The AHRI Certified® mark indicates Samsung's participation in the AHRI Certification program. For verification of individual certified products, go to www.ahridirectory.org.



*With Wind Baffles

Samsung HVAC maintains a policy of ongoing development, specifications are subject to change without notice.

Intertek

HIGH WALL

SPECIFICATIONS - 36,000

MODEL	INDOOR UNIT		AC036MNTDCH/AA
	OUTDOOR UNIT		AC036JXADCH/AA
PERFORMANCE	CAPACITY	COOLING	36,000 Btu/h
		HEATING	40,000 Btu/h
	CAPACITY RANGE	COOLING	14,000 - 39,000 Btu/h
		HEATING	11,500 - 48,000 Btu/h
	SEER / EER		18.3 / 9.3
	COP		2.84
HSPF		9.5	
POWER	VOLTAGE	ø / V / Hz	1 / 208-230 / 60
	MAX. BREAKER		35 A
	MIN. CIRCUIT AMPACITY		23.2 A
DIMENSIONS	W X H X D	INDOOR	50 3/8 X 9 15/16 X 13 9/16 in.
		OUTDOOR	37 X 48 X 13 in.
	WEIGHT	INDOOR	40.57 lbs.
		OUTDOOR	194 lbs.
SOUND PRESSURE LEVEL	INDOOR	L / M / H	46 / 48 / 51 dB(A)
	OUTDOOR	COOLING / HEATING (HIGH)	49 / 51 dB(A)
OPERATING TEMPERATURE	OUTDOOR	COOLING	(0*) 23 ≤ T ≤ 115°F
		HEATING	-4 ≤ T ≤ 76°F
PIPE CONNECTIONS	INDOOR & OUTDOOR	HIGH SIDE (FLARE)	3/8 in.
		LOW SIDE (FLARE)	5/8 in.
	MAX. LINE SET LENGTH		246 ft.
	MAX. VERTICAL SEPARATION		98 ft.
CONDENSATE CONNECTION		11/16 in. OD	
REFRIGERANT	TYPE		R410A
	FACTORY CHARGE		98.77 oz.
	CHARGED FOR		25 ft.
COMPRESSOR	TYPE		Inverter Driven, Twin BLDC Rotary
EVAPORATOR FAN	TYPE		BLDC With Crossflow Fan (1)
	AIR VOLUME	CFM (L / M / H)	699 / 752 / 830
CONDENSER FAN	MOTOR		BLDC With Axial Type Fan (2)
	CFM (MAX.)		3,040
ACCESSORIES	WIRED CONTROLLER	SIMPLIFIED	MWR-SH00N
		SIMPLIFIED TOUCH CONTROLLER	MWR-SH10N
		PREMIUM W/ SCHEDULING	MWR-WE13N
	THERMOSTAT ADAPTER (24VAC)		TADPT2
	WIRELESS CONTROLLER		AR-EH03E
	WI-FI ADAPTER		MIM-H03UN
	EXTERNAL TEMPERATURE SENSOR		MRW-TA
	EXTERNAL CONTACT CONTROL		MIM-B14
	CENTRAL CONTROL INTERFACE MODULE FOR CONNECTION TO DVM PLUS CONTROLS (NON-NASA)		MIM-N01
	WALL BRACKET (FOR OUTDOOR UNIT)		CKN-250
	WIND BAFFLE/GUARD	FRONT	WBF-1M2
		BACK	WBB-2M
	LINE SETS - INSULATED AND FLARED, INTERCONNECT CABLES INCLUDED		25' - ILS2510
		50' - ILS5010	



Product registration required. Conditions apply.



The AHRI Certified® mark indicates Samsung's participation in the AHRI Certification program. For verification of individual certified products, go to www.ahridirectory.org.



*With Wind Baffles

Samsung HVAC maintains a policy of ongoing development, specifications are subject to change without notice.

Intertek

-40° LOW AMBIENT COOLING

AVAILABLE CAPACITIES (Btu/h) - 18,000 | 24,000 | 30,000 | 36,000



18K & 24K MODELS



30K & 36K MODELS

Model Features

Low Ambient Cooling Capability

Cooling-only system with low ambient cooling capability down to -40° for machine and computer rooms and other commercial applications. Wind baffles are required for low ambient cooling to -40°.

Emergency Temperature Output

-40° indoor units can activate a backup system or notify a Building Management System (BMS) in the event of high room temperature conditions or if the main system has stopped due to an error (requires MIM-B14 external contact module).

Standard Features**

7-Day Programming¹

Auto Restart

Compatible with DVM S Central Controls

Optional Wi-Fi Control Capabilities

Pre Filter

Quiet Mode

Twin Rotary BLDC Compressor

Various Pipe Installation Options²

AHRI Certified

ETL Listed

Convenience Features

Away Mode¹

Optional Controllers³

MWR-SH00N

MWR-SH10N

MWR-WE13N

AR-EH03E

Notice: Federal law allows this unit to be installed only in: AK, AL, AR, CO, CT, DC, DE, FL, GA, HI, ID, IL, IA, IN, KS, KY, LA, MA, ME, MD, MI, MN, MO, MS, MT, NC, ND, NE, NH, NJ, NY, OH, OK, OR, PA, RI, SC, SD, TN, TX, UT, VA, VT, WA, WV, WI, WY and U.S. territories. Federal law prohibits installation of this unit in other states.

*Requires MIM-H03UN Wi-Fi adapter (sold separately)

**See standard feature details on pages 1-2

¹ Requires accessory controls (sold separately)

² Excludes 18K & 24K models

³ The -40° Low Ambient Cooling system does not include any controllers as standard. Controllers must be purchased separately; See controller details on page 40

-40° LOW AMBIENT COOLING

SPECIFICATIONS - 18,000 | 24,000

MODEL	INDOOR UNIT		AC018MNADCH/AA	AC024MNADCH/AA
	OUTDOOR UNIT		AC018MXSCCC/AA	AC024MXSCCC/AA
PERFORMANCE	CAPACITY	COOLING	18,000 Btu/h	24,000 Btu/h
	CAPACITY RANGE	COOLING	4,000 - 20,000 Btu/h	7,000 - 27,000 Btu/h
	SEER / EER		18.8 / 9.05	18.3 / 10.55
POWER	VOLTAGE	ø / V / Hz	1 / 208-230 / 60	1 / 208-230 / 60
	WORKING VOLTAGE RANGE		176 - 254 VAC (max. 3% deviation from each)	176 - 254 VAC (max. 3% deviation from each)
	OPERATING CURRENT	COOLING	1.5 / 8.5 / 10.5	1.8 / 10.0 / 15.0
	MAX. BREAKER		15 A	20 A
	MIN. CIRCUIT AMPACITY		13 A	16 A
DIMENSIONS	W X H X D	INDOOR	35 1/4 X 10 1/4 X 10 1/4 in.	41 15/16 X 11 15/16 X 11 9/16 in.
		OUTDOOR	34 9/16 X 25 1/8 X 12 3/16 in.	34 9/16 X 31 7/16 X 12 3/16 in.
	WEIGHT	INDOOR	23.81 lbs.	32.19 lbs.
		OUTDOOR	94.36 lbs.	114.64 lbs.
HEAT EXCHANGER	TYPE	INDOOR	Aluminum Fin / Copper Tube	Aluminum Fin / Copper Tube
		OUTDOOR	Aluminum, Flat Fin, Micro Channel	Aluminum, Flat Fin, Micro Channel
SOUND PRESSURE LEVEL	INDOOR	L / M / H	32 / 37 / 42 dB(A)	35 / 39 / 43 dB(A)
	OUTDOOR	COOLING / HEATING (HIGH)	48 dB(A)	50 dB(A)
OPERATING TEMPERATURE	INDOOR		61 ≤ T ≤ 90°F	61 ≤ T ≤ 90°F
	OUTDOOR		(-40*) 23 ≤ T ≤ 115°F	(-40*) 23 ≤ T ≤ 115°F
PIPE CONNECTIONS	INDOOR & OUTDOOR	HIGH SIDE (FLARE)	1/4 in.	1/4 in.
		LOW SIDE (FLARE)	1/2 in.	5/8 in.
	MAX. LINE SET LENGTH		98.4 ft.	164 ft.
	MAX. VERTICAL SEPARATION		65.6 ft.	98.4 ft.
CONDENSATE CONNECTION		11/16 in. OD	11/16 in. OD	
REFRIGERANT	TYPE		R410A	R410A
	CONTROL METHOD		Electronic Expansion Valve	Electronic Expansion Valve
	FACTORY CHARGE		45.92 oz.	70.56 oz.
	CHARGED FOR		25 ft.	25 ft.
	ADDITIONAL REFRIGERANT		0.11 oz./ft. over 25 ft.	0.11 oz./ft. over 25 ft.
COMPRESSOR	TYPE		Inverter Driven, Twin BLDC Rotary	Inverter Driven, Twin BLDC Rotary
EVAPORATOR FAN	TYPE		BLDC With Crossflow Fan (1)	BLDC With Crossflow Fan (1)
	AIR VOLUME	CFM (L / M / H)	265 / 336 / 406	410 / 477 / 551
CONDENSER FAN	MOTOR		BLDC	BLDC
	CFM (MAX.)		1,412	1,801
ACCESSORIES	WIRED CONTROLLER	SIMPLIFIED	MWR-SHOON	MWR-SHOON
		SIMPLIFIED TOUCH CONTROLLER	MWR-SH10N	MWR-SH10N
		PREMIUM W/ SCHEDULING	MWR-WE13N	MWR-WE13N
	WIRELESS CONTROLLER		AR-EH03E	AR-EH03E
	THERMOSTAT ADAPTER (24VAC)		TADPT2	TADPT2
	WI-FI ADAPTER		MIM-H03UN	MIM-H03UN
	EXTERNAL TEMPERATURE SENSOR		MRW-TA	MRW-TA
	EXTERNAL CONTACT CONTROL		MIM-B14	MIM-B14
	CENTRAL CONTROL INTERFACE MODULE FOR CONNECTION TO DVM PLUS CONTROLS (NON-NASA)		MIM-N01	MIM-N01
	WALL BRACKET (FOR OUTDOOR UNIT)		CKN-250	CKN-250
	WIND BAFFLE/GUARD	FRONT	WBF-5M	WBF-2M
		BACK	WBB-6M	WBB-7M
	LINE SETS - INSULATED AND FLARED, INTERCONNECT CABLES INCLUDED		25' - ILS2507	25' - ILS2509
50' - ILS5007			50' - ILS5009	



Product registration required.
Conditions apply.



The AHRI Certified® mark indicates Samsung's participation in the AHRI Certification program. For verification of individual certified products, go to www.ahridirectory.org.

Please Note: Federal law allows this unit to be installed only in: AK, AL, AR, CO, CT, DC, DE, FL, GA, HI, ID, IL, IA, IN, KS, KY, LA, MA, ME, MD, MI, MN, MO, MS, MT, NC, ND, NE, NH, NJ, NY, OH, OK, OR, PA, RI, SC, SD, TN, TX, UT, VA, VT, WA, WV, WI, WY and U.S. territories. Federal prohibits installation of this unit in other states.

*With Wind Baffles

Samsung HVAC maintains a policy of ongoing development, specifications are subject to change without notice.



Intertek

-40° LOW AMBIENT COOLING

SPECIFICATIONS - 30,000 | 36,000

MODEL	INDOOR UNIT		AC030MNTDCH/AA	AC036MNTDCH/AA
	OUTDOOR UNIT		AC030MXSCCC/AA	AC036MXSCCC/AA
PERFORMANCE	CAPACITY	COOLING	30,000 Btu/h	36,000 Btu/h
	CAPACITY RANGE	COOLING	9,000 - 37,000 Btu/h	10,000 - 38,000 Btu/h
	SEER / EER		19.7 / 10.20	18.0 / 8.1
POWER	VOLTAGE	ø / V / Hz	1 / 208-230 / 60	1 / 208-230 / 60
	WORKING VOLTAGE RANGE		176 - 254 VAC (max. 3% deviation from each)	176 - 254 VAC (max. 3% deviation from each)
	OPERATING CURRENT	COOLING	2.7 / 13.1 / 21.0	3.0 / 19.5 / 21.0
	MAX. BREAKER		30 A	30 A
	MIN. CIRCUIT AMPACITY		24 A	24 A
DIMENSIONS	W X H X D	INDOOR	50 3/8 X 13 5/8 X 10 in.	50 3/8 X 13 5/8 X 10 in.
		OUTDOOR	37 X 39 5/16 X 13 in.	37 X 47 9/16 X 13 in.
	WEIGHT	INDOOR	40.57 lbs.	40.57 lbs.
		OUTDOOR	159.61 lbs.	159.61 lbs.
HEAT EXCHANGER	TYPE	INDOOR	Aluminum Fin / Copper Tube	Aluminum Fin / Copper Tube
		OUTDOOR	Aluminum, Flat Fin, Micro Channel	Aluminum, Flat Fin, Micro Channel
SOUND PRESSURE LEVEL	INDOOR	L / M / H	45 / 47 / 49 dB(A)	46 / 48 / 51 dB(A)
	OUTDOOR	COOLING / HEATING (HIGH)	52 dB(A)	54 dB(A)
OPERATING TEMPERATURE	INDOOR		61 ≤ T ≤ 90°F	61 ≤ T ≤ 90°F
	OUTDOOR		(-40*) 23 ≤ T ≤ 115°F	(-40*) 23 ≤ T ≤ 115°F
PIPE CONNECTIONS	INDOOR & OUTDOOR	HIGH SIDE (FLARE)	3/8 in.	3/8 in.
		LOW SIDE (FLARE)	5/8 in.	5/8 in.
	MAX. LINE SET LENGTH		164 ft.	164 ft.
	MAX. VERTICAL SEPARATION		98.4 ft.	98.4 ft.
	CONDENSATE CONNECTION		1 1/16 in. OD	1 1/16 in. OD
REFRIGERANT	TYPE		R410A	R410A
	CONTROL METHOD		Electronic Expansion Valve	Electronic Expansion Valve
	FACTORY CHARGE		84.64 oz.	84.64 oz.
	CHARGED FOR		25 ft.	25 ft.
	ADDITIONAL REFRIGERANT		0.24 oz./ft. over 25 ft.	0.24 oz./ft. over 25 ft.
COMPRESSOR	TYPE		Inverter Driven, Twin BLDC Rotary	Inverter Driven, Twin BLDC Rotary
EVAPORATOR FAN	TYPE		BLDC With Crossflow Fan (1)	BLDC With Crossflow Fan (1)
	AIR VOLUME	CFM (L / M / H)	671 / 724 / 777	699 / 752 / 830
CONDENSER FAN	MOTOR		BLDC	BLDC
	CFM (MAX.)		2,754	2,754
ACCESSORIES	WIRED CONTROLLER	SIMPLIFIED	MWR-SH00N	MWR-SH00N
		SIMPLIFIED TOUCH CONTROLLER	MWR-SH10N	MWR-SH10N
		PREMIUM W/ SCHEDULING	MWR-WE13N	MWR-WE13N
	WIRELESS CONTROLLER		AR-EH03E	AR-EH03E
	THERMOSTAT ADAPTER (24VAC)		TADPT2	TADPT2
	WI-FI ADAPTER		MIM-H03UN	MIM-H03UN
	EXTERNAL TEMPERATURE SENSOR		MRW-TA	MRW-TA
	EXTERNAL CONTACT CONTROL		MIM-B14	MIM-B14
	CENTRAL CONTROL INTERFACE MODULE FOR CONNECTION TO DVM PLUS CONTROLS (NON-NASA)		MIM-N01	MIM-N01
	WALL BRACKET (FOR OUTDOOR UNIT)		CKN-250	CKN-250
	WIND BAFFLE/GUARD	FRONT	WBF-2M	WBF-2M
		BACK	WBB-3M	WBB-3M
	LINE SETS - INSULATED AND FLARED, INTERCONNECT CABLES INCLUDED		25' - ILS2510	25' - ILS2510
50' - ILS5010			50' - ILS5010	



Product registration required. Conditions apply.



The AHRI Certified® mark indicates Samsung's participation in the AHRI Certification program. For verification of individual certified products, go to www.ahridirectory.org.



Please Note: Federal law allows this unit to be installed only in: AK, AL, AR, CO, CT, DC, DE, FL, GA, HI, ID, IL, IA, IN, KY, LA, MA, ME, MD, MI, MN, MO, MS, MT, NC, ND, NE, NH, NJ, NY, OH, OK, OR, PA, RI, SC, SD, TN, TX, UT, VA, VT, WA, WI, WY and U.S. territories. Federal prohibits installation of this unit in other states.

*Wind baffles are required for low ambient cooling to -40°.

Samsung HVAC maintains a policy of ongoing development, specifications are subject to change without notice.

ACCESSORIES

360 CASSETTE | WIND-FREE™* 4-WAY CASSETTE | DUCT S | SLIM DUCT
MULTI-POSITION AIR HANDLER | HIGH WALL | -40° LOW AMBIENT COOLING

Line Sets

Insulated and flared, interconnect power and communication cables included

Part Number	Size	Included Wire	Length	Systems Used On
ILS2506	1/4" X 3/8"	14-3 Plus 16-2	25'	Slim Duct 9K & 12K, & High Wall 12K
ILS5006	1/4" X 3/8"	14-3 Plus 16-2	50'	Slim Duct 9K & 12K, & High Wall 12K
ILS2507	1/4" X 1/2"	14-3 Plus 16-2	25'	MPAH, Slim Duct, 360 Cassette, Wind-Free™* 4-Way Cassette, High Wall, -40°, & Duct S 18K
ILS5007	1/4" X 1/2"	14-3 Plus 16-2	50'	MPAH, Slim Duct, 360 Cassette, Wind-Free™* 4-Way Cassette, High Wall, -40°, & Duct S 18K
ILS2509	1/4" X 5/8"	14-3 Plus 16-2	25'	MPAH, Slim Duct, 360 Cassette, Wind-Free™* 4-Way Cassette, High Wall, -40°, & Duct S 24K
ILS5009	1/4" X 5/8"	14-3 Plus 16-2	50'	MPAH, Slim Duct, 360 Cassette, Wind-Free™* 4-Way Cassette, High Wall, -40°, & Duct S 24K
ILS2510	3/8" X 5/8"	14-3 Plus 16-2	25'	MPAH, 360 Cassette, High Wall, Duct S, -40° 30K & 36K & Wind-Free™* 4-Way Cassette 30K, 36K, 42K & 48K
ILS5010	3/8" X 5/8"	14-3 Plus 16-2	50'	MPAH, 360 Cassette, High Wall, Duct S, -40° 30K & 36K & Wind-Free™* 4-Way Cassette 30K, 36K, 42K & 48K

Interconnect Wire

Part Number	Description	Length	Systems Used On
I33-100	2 wire 16 AWG shielded	100'	All Duct, MPAH, High Wall, 360 Cassette, & Wind-Free™* 4-Way Cassette outdoor units
I33-250		250'	
I33-500		500'	

Condenser Wall Bracket

Part Number	Description	Systems Used On
KCN-250	Outdoor unit mounting bracket	All Duct, MPAH, High Wall, 360 Cassette, & Wind-Free™* 4-Way Cassette outdoor units

Wind Baffles

Part Number	Description
WBF-2M	Front wind baffle for 360 Cassette, Wind-Free™* 4-Way Cassette, Duct S, and MPAH 24K & 30K; High Wall 24K; -40° 24K, 30K & 36K Models
WBF-3M	Front wind baffle for Slim Duct 9K & 12K; High Wall 12K Models
WBF-4M	Front wind baffle for 360 Cassette, Wind-Free™* 4-Way Cassette, Slim Duct, Duct S, MPAH, and High Wall 18K Models
WBF-5M	Front wind baffle for -40° 18K Model
WBF-6M	Front wind baffle for Wind-Free™* 4-Way Cassette Max Heat™, Duct S Max Heat™, and MPAH Max Heat™ 30K & 36K; MPAH 54K Models
WBF-1M2	Front wind baffle for 360 Cassette, Wind-Free™* 4-Way Cassette, Duct S, and MPAH 36K, 42K, & 48K; High Wall 30K & 36K Models
WBB-2M	Rear wind baffle for 360 Cassette, Wind-Free™* 4-Way Cassette, Duct S, and MPAH 36K, 42K, & 48K; High Wall 36K Models
WBB-3M	Rear wind baffle for 360 Cassette, Wind-Free™* 4-Way Cassette, Duct S, MPAH, and High Wall 24K & 30K; -40° 30K & 36K Models
WBB-4M	Rear wind baffle for Wind-Free™* 4-Way Cassette Max Heat™, Duct S Max Heat™, and MPAH Max Heat™ 30K & 36K; MPAH 54K Models
WBB-5M	Rear wind baffle for Slim Duct 9K & 12K; High Wall 12K Models
WBB-6M	Rear wind baffle for 360 Cassette, Wind-Free™* 4-Way Cassette Max Heat™, Slim Duct, Duct S, MPAH, High Wall, and -40° 18K Models
WBB-7M	Rear wind baffle for -40° 24K Model

*The Wind-Free™ unit delivers an air current that is under 0.15 m/s while in Wind-Free™ mode. Air velocity that is below 0.15 m/s is considered "still air" as defined by ASHRAE 55-2013 (American Society of Heating, Refrigerating, and Air-Conditioning Engineers).

Due to Samsung HVAC's policy of ongoing product development, some part numbers may change without prior notice. Latest up-to-date submittals available at dvmdownload.com

ACCESSORIES (CONT.)

**360 CASSETTE | WIND-FREE™* 4-WAY CASSETTE | DUCT S | SLIM DUCT
MULTI-POSITION AIR HANDLER | HIGH WALL | -40° LOW AMBIENT COOLING**

Controls & Accessories

Part Number	Description	Systems Used On
MWR-SH10N	Simplified Touch Wired Controller	Compatible with all MPAH, Duct, High Wall, -40°, 360 Cassette, & Wind-Free™* 4-Way Cassette Models
MWR-SH00N	Simplified Wired Controller	
MWR-WE13N	Premium w/Scheduling Wired Controller	
AR-EH03E	Wireless Remote Controller	Compatible with all MPAH, Duct, High Wall & Wind-Free™* 4-Way Cassette Models
MRK-A10N	Wireless Signal Receiver	Compatible with all MPAH & Duct Models
MRW-TA	External Temperature Sensor	Compatible with all MPAH, Duct, High Wall, -40°, 360 Cassette, & Wind-Free™* 4-Way Cassette Models
MIM-B14	External Contact Control	
MIM-N01	Central Control Interface Module for Connection to DVM Plus Controls (non-NASA)	
MIM-H03UN	Multi Wi-Fi Control	
AR-KH00U	Wireless remote control for 360 Cassette	Compatible with 360 Cassette
TADPT2	24VAC Thermostat Adapter	Compatible with all MPAH, Duct, High Wall, -40°, 360 Cassette, & Wind-Free™* 4-Way Cassette Models

Filter Box

Part Number	Description	Systems Used On
FB-DS1	Filter Box	Duct S 18K
FB-DS2	Filter Box	Duct S 24K & 30K
FB-DS3	Filter Box	Duct S 36K, 42K, & 48K
FB-SLIM1	Filter Box	Slim Duct 9K & 12K
FB-SLIM2	Filter Box	Slim Duct 18K
VFB-1	Filter Base with MERV8 Filter	MPAH 18K & 24K
VFB-2	Filter Base with MERV8 Filter	MPAH 30K & 36K
VFB-3	Filter Base with MERV8 Filter	MPAH 42K, 48K, & 54K

*The Wind-Free™ unit delivers an air current that is under 0.15 m/s while in Wind-Free™ mode. Air velocity that is below 0.15 m/s is considered "still air" as defined by ASHRAE 55-2013 (American Society of Heating, Refrigerating, and Air-Conditioning Engineers).

Due to Samsung HVAC's policy of ongoing product development, some part numbers may change without prior notice. Latest up-to-date submittals available at dvmdownload.com

ACCESSORIES (CONT.)

360 CASSETTE | WIND-FREE™* 4-WAY CASSETTE | DUCT S | SLIM DUCT
MULTI-POSITION AIR HANDLER | HIGH WALL | -40° LOW AMBIENT COOLING

Wind-Free™* 4-Way Cassette Fascia Panels

Part No.	PC4NUFMAN
L X W X H	37 3/8 X 37 3/8 X 2 1/2 in.
Weight	13.88 lbs.

360 Cassette Fascia Panels

Ceiling Type (Square)

White	PC4NUDMAN
Black	PC4NBDMAN
L X W X H	39 3/8 X 39 3/8 X 2 3/8 in.
Weight	7.94 lbs.

Open Type (Circle)

White	PC4NUNMAN
Black	PC4NBNMAN
Diameter X H	41 5/16 X 3 11/16 in.
Weight	5.95 lbs.

MPAH Electric Heat Kit Compatibility

KIT NUMBER	VHK-103A	VHK-105A	VHK-205A	VHK-210A	VHK-305A	VHK-310A	VHK-315A
kW	3 kW	5 kW	5 kW	10 kW	5 kW	10 kW	15 kW
AC018KNZDCH/AA	●	●					
AC024KNZDCH/AA	●	●					
AC030KNZDCH/AA			●	●			
AC036KNZDCH/AA			●	●			
AC042KNZDCH/AA					●	●	
AC048KNZDCH/AA					●	●	
AC054KNZDCH/AA					●	●	●

*The Wind-Free™ unit delivers an air current that is under 0.15 m/s while in Wind-Free™ mode. Air velocity that is below 0.15 m/s is considered "still air" as defined by ASHRAE 55-2013 (American Society of Heating, Refrigerating, and Air-Conditioning Engineers).

Due to Samsung HVAC's policy of ongoing product development, some part numbers may change without prior notice. Latest up-to-date submittals available at dvmdownload.com

CONTROL OPTIONS

360 CASSETTE | WIND-FREE™* 4-WAY CASSETTE | DUCT S | SLIM DUCT
MULTI-POSITION AIR HANDLER | HIGH WALL | -40° LOW AMBIENT COOLING



AR-KH00U†

AR-EH03E

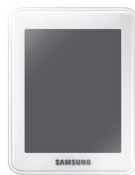
Wireless Remote Controller

Optional - Wireless Remote Controller Features

- ON/OFF operation, fan speed, airflow, and temperature setting
- Filter replacement alarm reset
- Single event, ON/OFF timer function
- Chime Mute
- Easy-to-see display
- Soft touch buttons



MWR-SH00N



MWR-SH10N

Simplified Wired Controller

Optional - MWR-SH00N Features**

- Error display
- Filter replacement alarm display and reset
- Indoor unit ON/OFF, operation mode, set temperature, and fan speed setting
- Different button permission levels
- Control up to 16 different indoor units
- Upper/lower temperature setting
- Service Mode
- Louver position setting (Cassette and wall units)
- Restrict wireless controller signal (optional)

Simplified Touch Wired Controller

Optional - MWR-SH10N Features**

- Restrict wireless controller signal (optional)
- Louver position setting (Cassette and wall units)
- Single event timer function
- System function and operation indication (defrost, error, restricted controller, SPI status)
- Service mode for operation monitoring, addressing, and setup
- Different button permission levels
- Built-in infrared receiver for wireless control
- Backlight
- Internal temperature sensor



MWR-WE13N

Premium Wired Controller

Optional - MWR-WE13N Features**

- Discharge air temperature setting (for supported models)
- Error display
- Filter replacement alarm display and reset
- Indoor unit ON/OFF, operation mode, set temperature, directional airflow, and fan speed setting
- Control up to 16 different indoor units
- Upper/lower temperature setting
- Energy saving operation mode
- Weekly operating schedule
- Different button permission levels
- Backlight
- Daylight Savings clock advance option
- Real-time clock function; current time/day display function
- Built-in room sensor
- Service mode support (indoor unit cycle data monitoring, option code monitoring and settings, and dip switch state monitoring)
- Independent louver control for Wind-Free™* 4-Way Cassette models
- Adjustable heating temperature compensation values
- Time synchronization with DMS 2.5 central control gateways
- Wind-Free™* function

*The Wind-Free™ unit delivers an air current that is under 0.15 m/s while in Wind-Free™ mode. Air velocity that is below 0.15 m/s is considered "still air" as defined by ASHRAE 55-2013 (American Society of Heating, Refrigerating, and Air-Conditioning Engineers).

†Compatible with 360 Cassette models only

**Some features may not be available depending on the model of connected indoor unit(s)

SAMSUNG

SAMSUNGHVAC.COM