

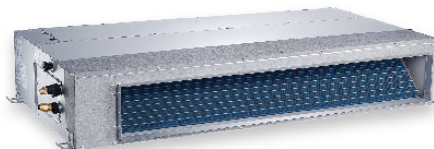
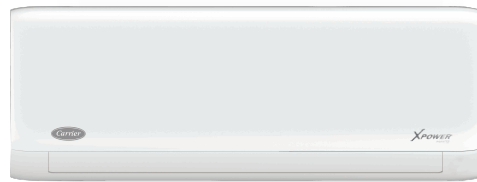


**XPOWERMULTI**  
INVERTER

UP TO 21 SEER

# Multi Split System

Continuous Comfort. Endless Options.



# Smart Comfort. Superior Performance.

Carrier's Xpower Multi Split System will deliver the ultimate cooling and heating comfort with the maximum flexibility.



## Energy Efficient

DC Inverter technology with twin rotary compressor and DC fan motor, allows systems to achieve excellent energy efficiencies up to 21 SEER.

## Space-saving Installation

Up to five indoor units can be connected to a single outdoor unit, reducing the number of outdoor units required. All indoor units can be individually controlled and do not need to be installed at the same time.



## Application Flexibility

Long piping design for a wide choice of installation sites.

## Personalized Comfort Control

Enjoy separate comfort settings on the indoor units with individual remote controls.

## Quiet Operation

Ideal for spaces where people spend large amounts of time, and need low sound levels.

## Environmentally Friendly

Washable filters on indoor units and the use of R410A refrigerant reduce harmful effects on the earth.



# TECHNICAL SPECIFICATIONS

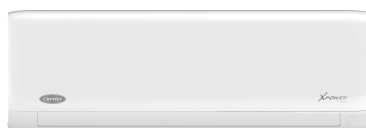
## Outdoor Units



### HEAT PUMP INVERTER CONDENSER

Outdoor Model		38QUS018DS2-2	38QUS027DS3-1	38QUS036DS4-1	38QUS042DS5-1
Power supply	V-ph-Hz	208-230V~, 50/60Hz, 1Ph	208-230V~, 50/60Hz, 1Ph	208-230V~, 50/60Hz, 1Ph	208-230V~, 50/60Hz, 1Ph
Rating Capacity (Cooling/Heating)(Range)	Btu/h	18000/19000 (4500~1900) / (6400~2000)	27000/28000 (7000~27000) / (8000~28000)	36000/38000 (8200~37500) / (9200~39500)	42000/42000 (10000~42000) / (9600~42000)
Rating Current (Cooling/Heating)(Range)	A	8.0/7.1 (2.8-8.5/2.3-7.5)	11.5/10.6 (6.1-13.0)	16.6/13.7 (9.3-17.2)	17/15.2 (6.2-18.1)
Rating Input (Cooling/Heating)	W	1750/1550	2570/2350	3800/3110	3900/3465
EER / COP	W/W	3.2/3.6	3.1/3.6	2.8/3.5	3.2/3.5
SEER		21	21	21	21
Max current	A	12	16	21.5	22
Max input	W	2300	3300	4600	4700
Outdoor air flow	m <sup>3</sup> /h	2000	2700	4000	4000
Outdoor sound pressure level	dB(A)	55.5	59.5	63	63
Metering device		Capillary+EXV			
Dimension(W*D*H)	mm	800x333x554	845x363x702	946x410x810	946x410x810
Packing(W*D*H)	mm	920x390x615	965x395x755	1090x500x865	1090x500x865
Net/Gross weight	kg	37.5/40.5	52.5/56	70/75	76/81
Refrigerant charge amount, R410A	kg	1.7	2.1	3.0	3.6
Design pressure	MPa	4.2/1.5			
Refrigerant piping (Liquid side/ Gas side)	mm(inch)	2 x $\Phi$ 6.35/ $\Phi$ 9.52(1/4"/3/8")	3 x $\Phi$ 6.35/ $\Phi$ 9.52(1/4"/3/8")	3 x $\Phi$ 6.35/ $\Phi$ 9.52(1/4"/3/8") 1 x $\Phi$ 6.35/ $\Phi$ 12.7(1/4"/1/2")	4 x $\Phi$ 6.35/ $\Phi$ 9.52(1/4"/3/8") 1 x $\Phi$ 6.35/ $\Phi$ 12.7(1/4"/1/2")
Additional Adapters in CDU	mm(inch)	1 x $\Phi$ 9.52- $\Phi$ 12.7(3/8"-1/2")	1 x $\Phi$ 9.52- $\Phi$ 12.7(3/8"-1/2")	1 x $\Phi$ 6.35- $\Phi$ 9.52(1/4"-3/8") 1 x $\Phi$ 9.52- $\Phi$ 12.7(3/8"-1/2") 1 x $\Phi$ 12.7- $\Phi$ 9.52(1/2"-3/8") 1 x $\Phi$ 12.7- $\Phi$ 15.9(1/2"-5/8")	1 x $\Phi$ 6.35- $\Phi$ 9.52(1/4"-3/8") 1 x $\Phi$ 12.7- $\Phi$ 9.52(1/2"-3/8") 1 x $\Phi$ 9.52- $\Phi$ 12.7(3/8"-1/2") 1 x $\Phi$ 12.7- $\Phi$ 15.9(1/2"-5/8")
Max. length for all rooms	m	40	45	60	60
Max. length for one indoor unit	m	25	25	30	30
Max. vertical separation between IDU and CDU	CDU above	10			
	CDU below	15			
Max. vertical separation between indoor units	m	10			
Ambient Temp. cooling	°C	-10-46			
Ambient Temp. cooling	°C	-15-24			
Compressor	Model	ASM135D23UFZ	ATF235D22UMT	ATF250D22UMT	ATF310D43UMT
	Type	Dual Rotary			
	Brand	GMCC			

# Indoor Units



## HI WALL HEAT PUMP

Model		42QHG009D8S	42QHG012D8S	42QHG018D8S	42QHG024D8S
Power supply	V-ph-Hz	220~240V / 1Ph / 50/60Hz	220~240V / 1Ph / 50/60Hz	220~240V / 1Ph / 50/60Hz	220~240V / 1Ph / 50/60Hz
Cooling Capacity	Btu/h	9000	12000	18000	24000
Heating Capacity	Btu/h	9000	12000	18000	24000
Indoor fan motor input	W	22	20	36	60
Indoor fan motor max current	A	0.5	0.5	0.5	0.7
Sound power level	dB(A)	56	56	58	63
Sound pressure level (Min. ~ Max.)	dB(A)	20~37	20~37	21~41	22~47
Air flow (Min. ~ Max.)	m <sup>3</sup> /h	180~460	195~530	300~800	480~1090
Weight (Net/Gross)	kg	8.0/10.5	8.7/11.5	11.2 / 14.6	13.6 / 17.3
Dimensions (WxDxH)	mm	726x210x291	835x208x295	969x241x320	1083x244x336
Packing (WxDxH)	mm	790x270x375	905x290x355	1045x315x405	1155x315x415
Refrigerant piping (Liquid side/Gas side)	mm(inch)	Φ6.35/Φ9.52 (1/4"/3/8")	Φ6.35/Φ9.52 (1/4"/3/8")	Φ6.35/Φ12.7 (1/4"/1/2")	Φ9.52/Φ15.9 (3/8"/5/8")



Optional\*

## CASSETTE

Model		42QTD009DS-2	42QTD012DS-2	42QTD018DS-2	42QTD024DS-1
Power supply	V-ph-Hz	208-230V~, 50/60Hz, 1Ph	208-230V~, 50/60Hz, 1Ph	208-230V~, 50/60Hz, 1Ph	208-230V~, 50/60Hz, 1Ph
Capacity	Btu/h	9000	12000	18000	24000
Input	W	40	40	40	120
Current	A	0.18	0.18	0.18	0.53
Indoor air flow	m <sup>3</sup> /h	580/500/450	617/504/416	680/560/500	1520/1350/1200
Indoor sound pressure level	dB(A)	38/34/29	43/39/35	44/42/41	48/46/43
Dimension (W x Dx H)(body)	mm	570x570x260	570x570x260	570x570x260	840x840x245
Packing (W x Dx H)(body)	mm	662x662x317	655x655x290	662x662x317	900x900x257
Dimension (W x Dx H)(panel)	mm	647x647x50	647x647x50	647x647x50	950x950x55
Packing (W x Dx H)(panel)	mm	715x715x123	715x715x123	715x715x123	1035x1035x90
Net/Gross weight(body)	kg	14.5/17.3	16.2/21.4	16.1/18.9	24/28
Net/Gross weight	kg	2.5/4.5	2.5/4.5	2.5/4.5	5/8
Design pressure	MPa	4.2/1.5			
Drainage water pipe dia.	mm	ODΦ25	ODΦ25	ODΦ25	ODΦ32
Refrigerant piping Liquid side/ Gas side	mm	Φ6.35/Φ9.52(1/4"/3/8")	Φ6.35/Φ12.7(1/4"/1/2")	Φ6.35/Φ12.7(1/4"/1/2")	Φ9.52/Φ15.9(3/8"/5/8")
Controller		Remote control			
Room temperature Range	Cooling	17-32			
	Heating	0-30			
40CAS-S4		PANELS FOR 9,12, AND 18MBTU CASSETTES			
40CAS-L2		PANELS FOR 24MBTU CASSETTE			

\* Optional Wired Controller. Part number 17317100A22492

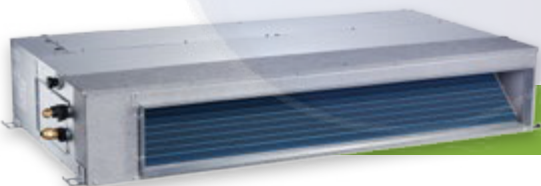
# Indoor Units



## CONSOLE

\* Optional wired controller

Model			42QZA009DS-2	42QZA012DS-2
Power supply	V-ph-Hz		208-230V~, 50/60Hz, 1Ph	208-230V~, 50/60Hz, 1Ph
Capacity	Btu/h		9000	12000
Input	W		40	40
Current	A		0.17	0.17
Indoor air flow	m3/h		512/480/370	512/480/370
Indoor sound pressure level	dB(A)		43/41.5/35	43/41.5/35
Indoor unit	Dimension (W x Dx H)	mm	700x600x210	
	Packing (W x Dx H)	mm	810x710x305	
	Net/Gross weight	kg	14.8/19	14.8/19
Design pressure	MPa		4.2/1.5	
Drainage water pipe dia.	mm		ODΦ16	
Refrigerant piping	Liquid side/ Gas side	mm	Φ6.35/Φ12.7(1/4"/1/2")	Φ6.35/Φ12.7(1/4"/1/2")
Controller			Remote control	
Room temperature	Cooling	°C	17-32	
	Heating	°C	0-30	



## SLIM DUCT FAN COIL

Model			42QSS012DS-2	42QSS018DS-2	42QSS024DS-2
Power supply	V-ph-Hz		208-230V~, 50/60Hz, 1Ph	208-230V~, 50/60Hz, 1Ph	208-230V~, 50/60Hz, 1Ph
Capacity	Btu/h		12000	18000	24000
Input	W		60	160	160
Current	A		0.3	0.8	0.8
Indoor air flow	m3/h		680/480/300	850/725/570	1200/1000/850
Indoor sound pressure level	dB(A)		40/34.5/27.5	42/40/36	44/42/37
Indoor unit	Dimension (W x Dx H)	mm	700x450x200	880x674x210	1100x774x249
	Packing (W x Dx H)	mm	860x540x275	1070x725x270	1305x805x305
	Net/Gross weight	kg	18/22	23.5/29	31/38
Design pressure	MPa		4.2/1.5		
Drainage water pipe dia.	mm		ODΦ25		
Refrigerant piping	Liquid side/ Gas side	mm	Φ6.35/Φ9.52(1/4"/3/8")	Φ6.35/Φ12.7(1/4"/1/2")	Φ9.52/Φ15.9(3/8"/5/8")
Controller			Wired control		
Room temperature	Cooling	°C	17-32		
	Heating	°C	0-30		



# Combinations & Capacities

OUTDOOR UNIT MODEL		COOLING CAPACITY (Btu/h)				
18K 1 drive 2		IDU 1	IDU 2			
9+9	2 --- IDU	9,000	9,000			
9+12		8,500	10,500			
12+12		9,500	9,500			
27K 1 drive 3		IDU 1	IDU 2	IDU 3		
9+9	2 --- IDU	9,500	9,500			
9+12		9,500	12,000			
9+18		8,400	16,600			
12+12		12,000	12,000			
12+18		10,000	15,000			
9+9+9	3 --- IDU	9,000	9,000	9,000		
9+9+12		8,500	8,500	11,000		
9+9+18		8,000	8,000	12,000		
9+12+12		8,000	10,000	10,000		
12+12+12		9,500	9,500	9,500		
36K 1 drive 4		IDU 1	IDU 2	IDU 3	IDU 4	
9+9	2 --- IDU	9,500	9,500			
9+12		9,500	12,000			
9+18		9,500	17,500			
12+12		12,000	12,000			
12+18		12,000	18,000			
18+18		16,500	16,500			
9+24		8,500	22,500			
12+24		10,500	21,000			
9+9+9		3 --- IDU	9,333	9,333	9,333	
9+9+12			9,000	9,000	12,000	
9+9+18	8,000		8,000	16,000		
9+9+24	8,000		8,000	21,000		
9+12+12	8,500		11,500	11,500		
9+12+18	8,000		11,000	15,000		
9+12+24	8,000		10,000	20,000		
9+18+18	8,000		14,000	14,000		
12+12+12	11,333		11,333	11,333		
12+12+18	11,000		11,000	14,000		
12+12+24	9,333	9,333	20,000			
12+18+18	9,333	13,333	13,333			
9+9+9+9	4 --- IDU	9,000	9,000	9,000	9,000	
9+9+9+12		8,500	8,500	8,500	11,500	
9+9+9+18		8,000	8,000	8,000	14,000	
9+9+12+12		8,000	8,000	10,500	10,500	
9+9+12+18		7,500	7,500	9,000	14,000	
9+12+12+12		7,000	10,000	10,000	10,000	
9+12+12+18		7,000	10,000	10,000	12,500	
12+12+12+12		9,500	9,500	9,500	9,500	
12+12+12+18		9,500	9,500	9,500	12,000	
12+18+12+18		9,500	9,500	9,500	12,000	

OUTDOOR UNIT MODEL		COOLING CAPACITY (Btu/h)				
42K 1 drive 5		IDU 1	IDU 2	IDU 3	IDU 4	IDU 5
9+9	2 --- IDU	9,500	9,500			
9+12		9,500	12,000			
9+18		9,500	18,500			
9+24		9,000	23,000			
12+12		12,000	12,000			
12+18		12,000	18,000			
12+24		12,000	23,000			
18+18		18,500	18,500			
18+24		17,500	22,500			
9+9+9	3 --- IDU	9,500	9,500	9,500		
9+9+12		9,500	9,500	12,000		
9+9+18		9,500	9,500	18,000		
9+9+24		9,000	9,000	22,500		
9+12+12		9,500	12,500	12,500		
9+12+18		9,000	12,000	18,000		
9+12+24		9,000	12,000	21,500		
9+18+18		8,000	16,000	16,000		
12+12+12		12,000	12,000	12,000		
12+12+18		12,000	12,000	17,000		
12+12+24	11,000	11,000	21,000			
12+18+18	11,000	16,000	16,000			
9+9+9+9	4 --- IDU	9,250	9,250	9,250	9,250	
9+9+9+12		9,000	9,000	9,000	12,000	
9+9+9+18		8,500	8,500	8,500	16,000	
9+9+9+24		8,000	8,000	8,000	21,000	
9+9+12+12		9,000	9,000	12,000	12,000	
9+9+12+18		8,000	8,000	11,000	16,000	
9+9+12+24		7,500	7,500	10,000	18,000	
9+12+12+12		8,000	11,000	11,000	11,000	
9+12+12+18		7,500	10,000	10,000	14,000	
12+12+12+12		10,000	10,000	10,000	10,000	
12+12+12+18	9,500	9,500	9,500	14,000		
9+9+9+9+9	5 --- IDU	8,500	8,500	8,500	8,500	8,500
9+9+9+9+12		8,000	8,000	8,000	8,000	11,000
9+9+9+9+18		7,500	7,500	7,500	7,500	13,000
9+9+9+12+12		7,500	7,500	7,500	10,000	10,000
9+9+9+12+18		7,000	7,000	7,000	10,000	12,000
9+9+12+12+12		7,000	7,000	9,500	9,500	9,500
9+12+12+12+12		7,000	9,000	9,000	9,000	9,000
9+12+12+12+18		6,500	8,000	8,000	8,000	12,000
12+12+12+12+12	8,500	8,500	8,500	8,500	8,500	

\*IDU - Indoor Unit





A Century of Innovation.

Built on Willis Carrier's invention of modern air conditioning in 1902, Carrier is the world leader in heating, air-conditioning and refrigeration solutions. We constantly build upon our history of proven innovation with new products and services that improve global comfort and efficiency. Carrier Ductless Systems deliver efficiency, performance and control thanks to advanced technology. When it comes to creating comfort, one size or system may not fit all, but one name does: Carrier.

[WWW.CARRIERLATAM.COM](http://WWW.CARRIERLATAM.COM)