



REMOTE CONTROLLER **OWNER'S MANUAL**



16117000002602
CA13R-RG10(U)
2024.03.26


CONTENT




1. QUICK START	2
2. DISPLAY AND BUTTONS	3
2.1 Display	3
2.2 Buttons	4
3. HOW TO USE BASIC FUNCTIONS	6
3.1 Basic Operations	6
3.2 Timer Function	7
4. HOW TO USE ADVANCED FUNCTIONS	9



INSTRUCTIONS OF USING WIRELESS REMOTE CONTROL

- The remote control uses two alkaline batteries (1.5 Volts).
- Do not use old batteries or batteries of different types, as this may cause the controller malfunction.
- If you do not use the remote control for more than two months, please remove the batteries. Otherwise battery leakage may damage the remote control.
- The average battery life during normal use is approximately half a year. Replace the batteries when there is no receiving beep coming from the indoor unit or transmission indicator  on the remote control fails to light.
- The maximum operating distance for the remote control is approximately 8 meters.
- The transmitter of remote control must be directed toward the receiver of indoor unit when pressing the buttons of the desired functions. An acoustical acknowledgement sound (beep) will indicate that signal has been received.
- Avoid obstacles obstructions such as curtains, doors or other materials between the remote control and the receiver of indoor unit to avoid blocking the signals from the remote control to the indoor unit.
- Avoid direct sunlight on the receiver of indoor unit, which may interfere with good signal reception and the air conditioner may not work properly. Draw the curtains to avoid direct sunlight.
- Keep the remote control away from water. Do not let the remote control fall down.
- Never use objects with sharp point to press the button on the remote control.
- Prevent any liquid from falling into the remote control.
- If other electric applications react to the remote control, move these applications.

Correct Disposal of Battery

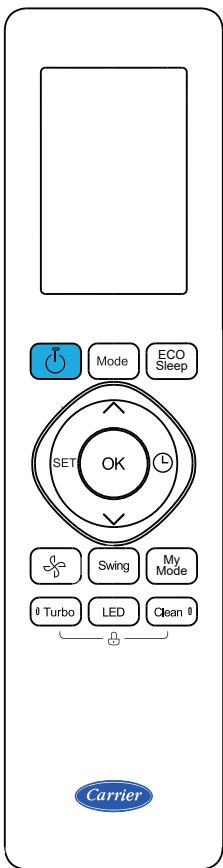


- Do not dispose of batteries as unsorted municipal waste. Refer to local laws for proper disposal of batteries.

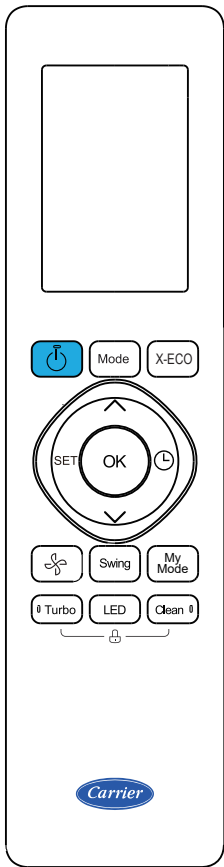
- Batteries may have a chemical symbol at the bottom of the disposal icon. This chemical symbol means that the battery contains a heavy metal that exceeds a certain concentration. An example is Pb: Lead (>0.004%).

- Appliances and used batteries must be treated in a specialized facility for reuse, recycling and recovery. By ensuring correct disposal, you will help avoid possible negative consequences for the environment and human health.

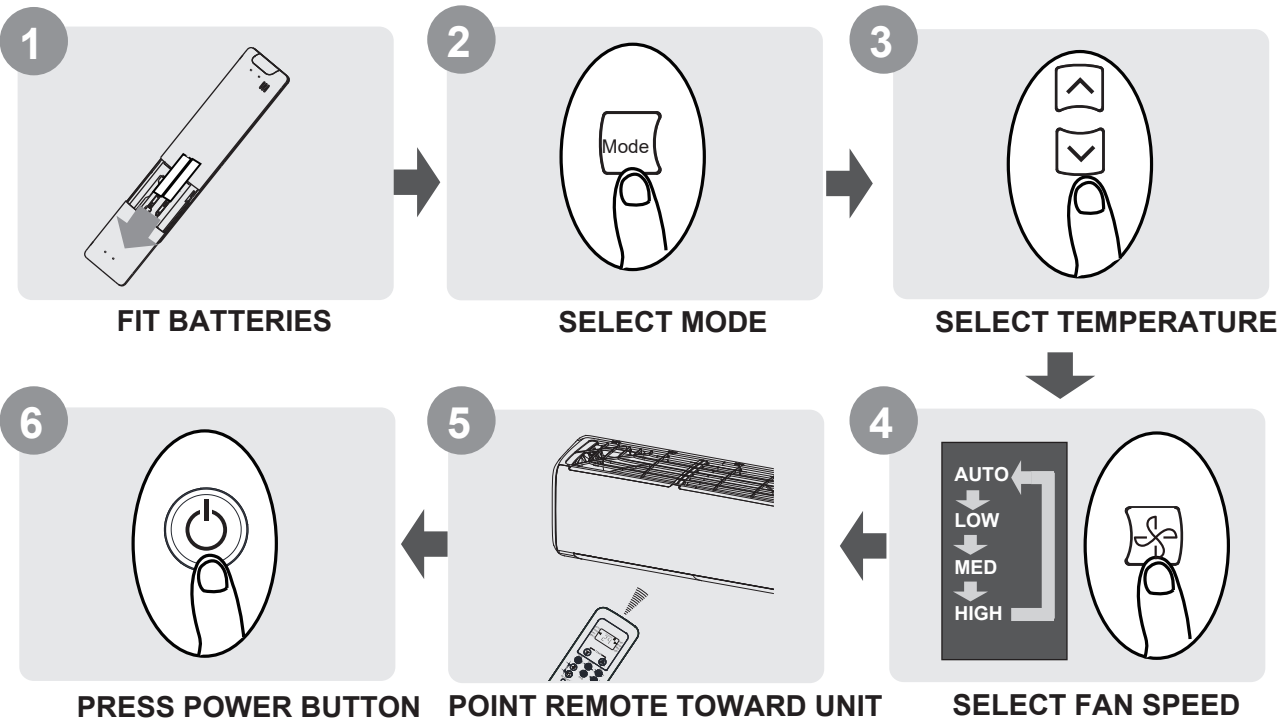
1. QUICK START



MODEL:
RG10B2(U)/BGEF
RG10B10(U)/BGEF
RG10B2(U)/BGCEF



MODEL:
RG10A5(U)/BGEF
RG10A11(U)/BGEF

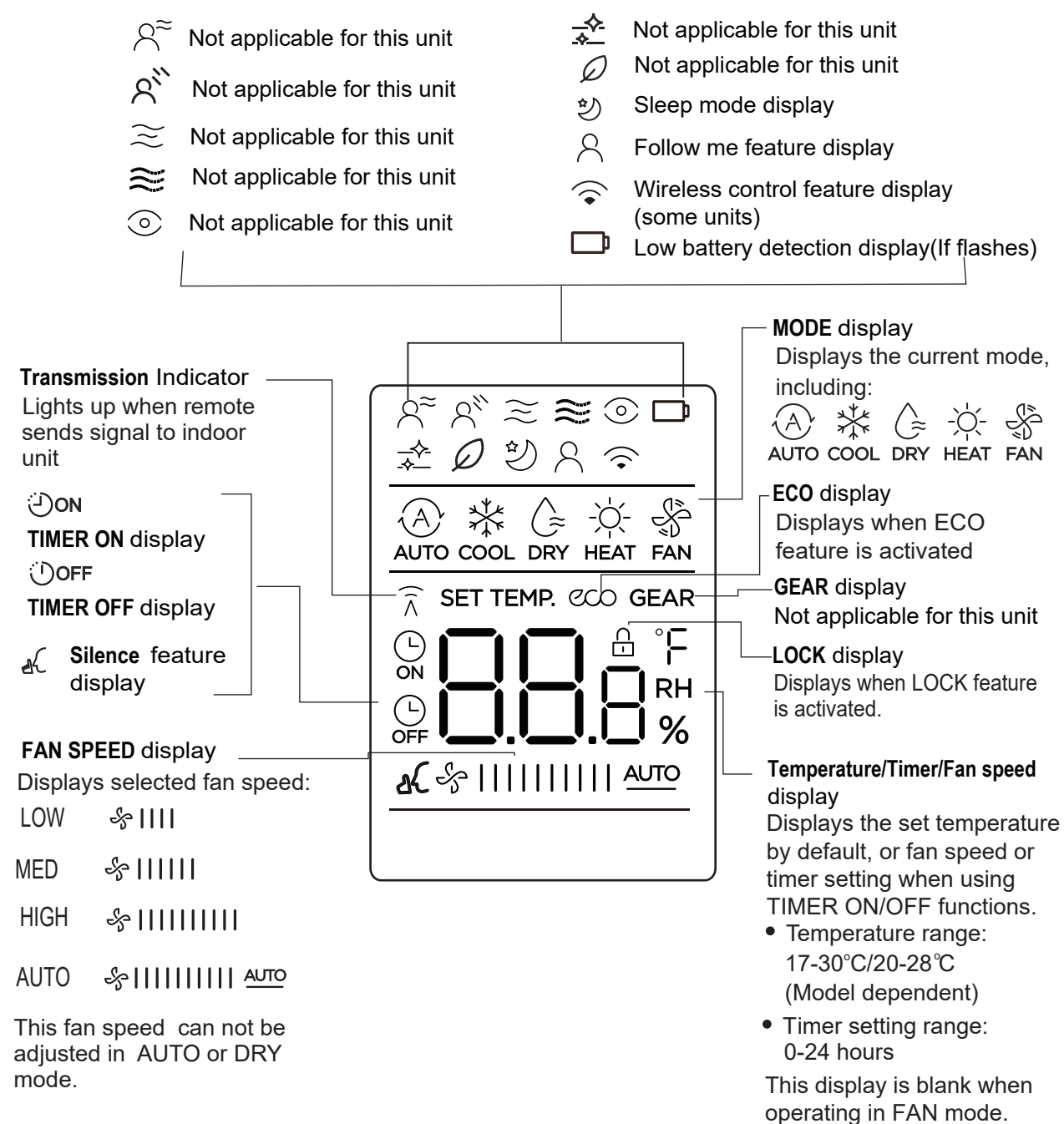


2. DISPLAY AND BUTTONS



2.1 DISPLAY

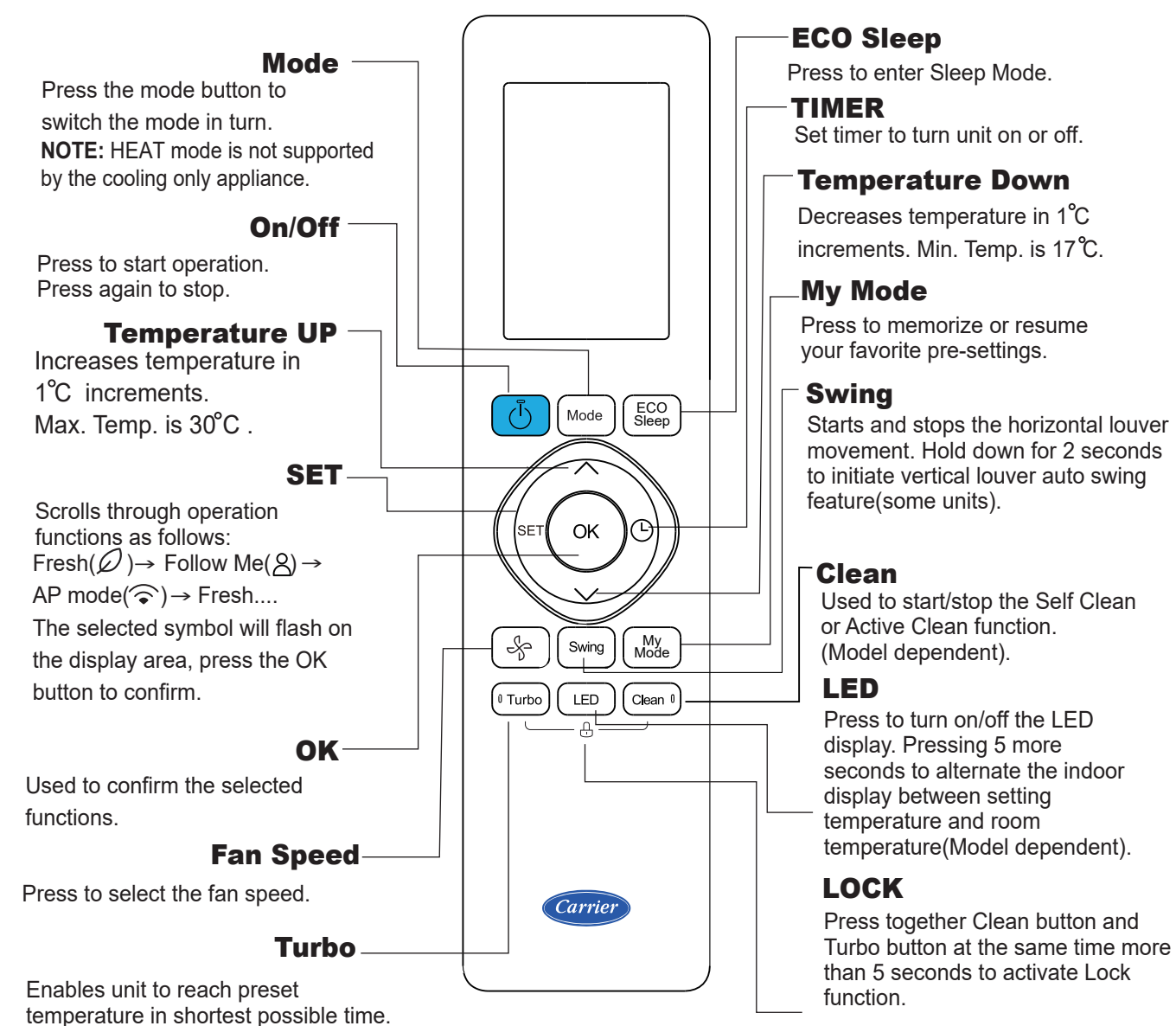
Information are displayed when the remote controller is powered up.



Note:

All indicators shown in the figure are for the purpose of clear presentation. But during the actual operation, only the relative function signs are shown on the display window.

2.2 BUTTONS



MODEL:RG10B2(U)/BGEF

RG10B10(U)/BGEF(20-28°C)

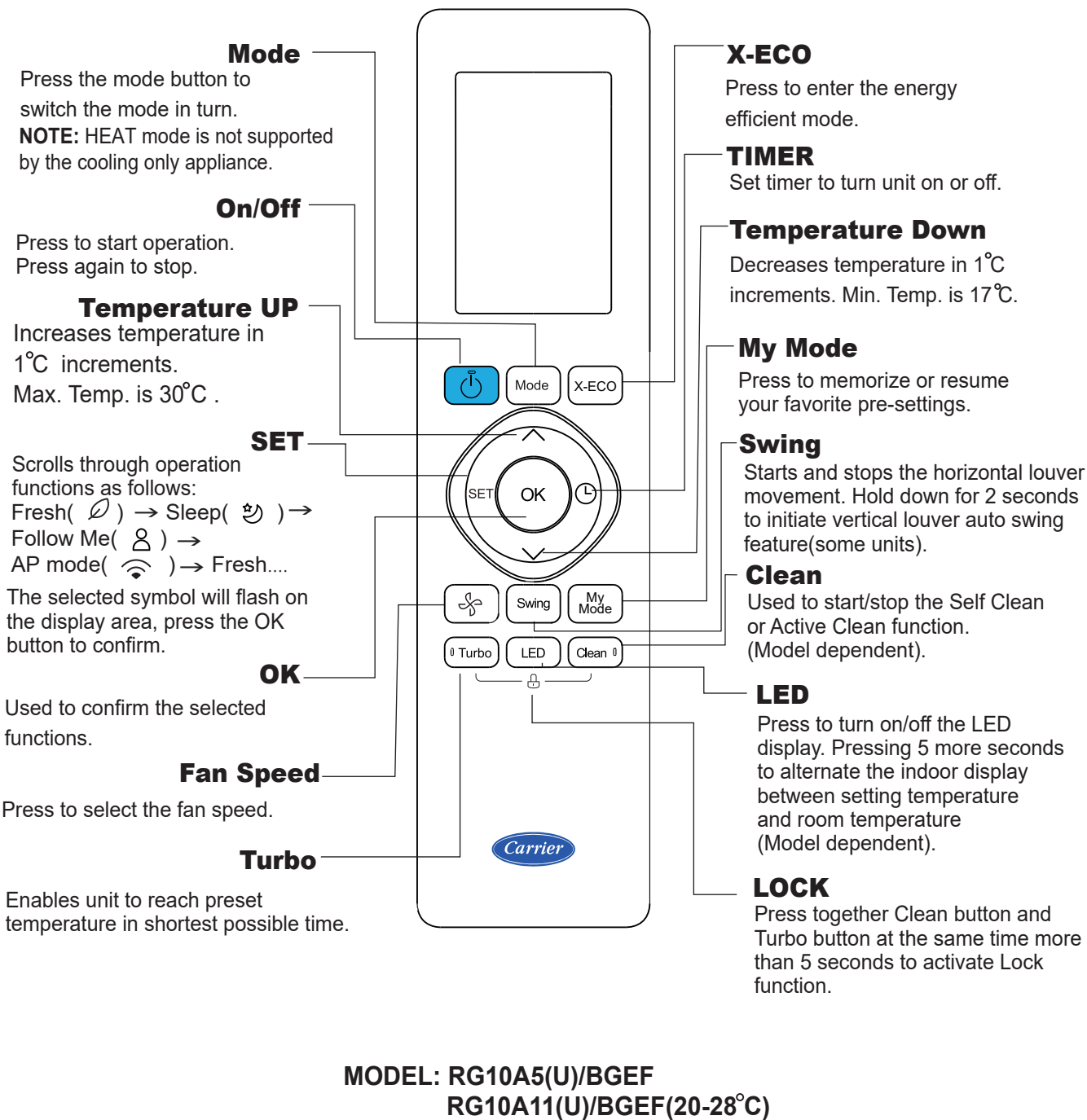
RG10B2(U)/BGCEF (Cooling only models, AUTO mode and HEAT mode are not available)

2. DISPLAY AND BUTTONS

3. HOW TO USE BASIC FUNCTIONS

Carrier

2.2 BUTTONS

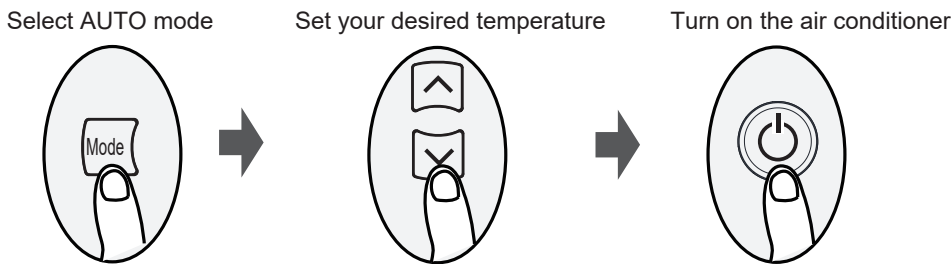


NOTE:
1. Above illustration shows all the features. For actual model, only the relevant parts are shown.
2. Buttons design might be slightly different from the actual one.

3.1 BASIC OPERATIONS

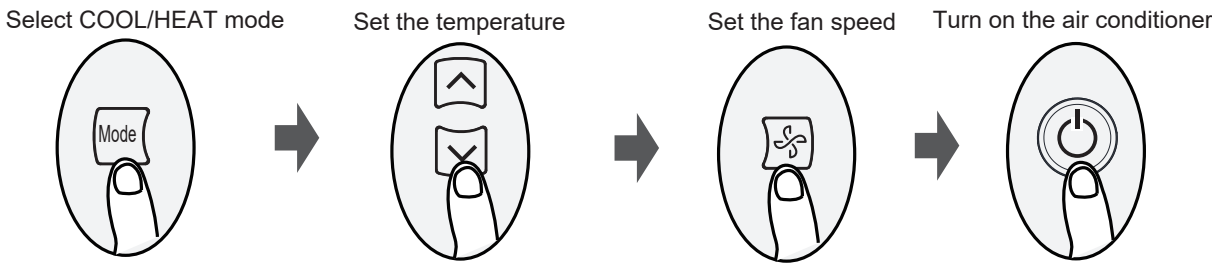
! ATTENTION Before operation, please ensure the unit is plugged in and power is available.

AUTO Mode

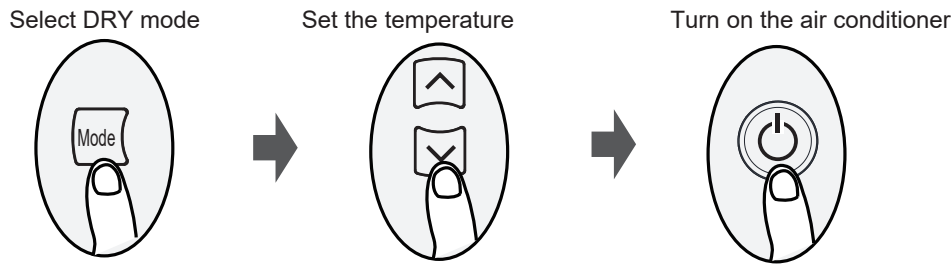


NOTE:
1. In AUTO mode for heat pump system, the air conditioner can automatically choose the mode of Cool, Heat or Fan by sensing the difference between the actual room temperature and setting temperature.
2. In AUTO mode for cooling only system, the air conditioner can automatically choose the mode of Cool or Fan by sensing the difference between the actual room temperature and setting temperature.
3. In AUTO mode, fan speed can not be set.

COOL or HEAT Mode

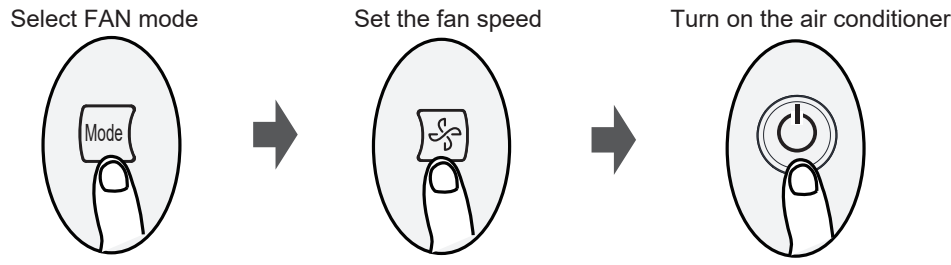


DRY Mode



NOTE:
In DRY mode, fan speed can not be set since it has already been automatically controlled.

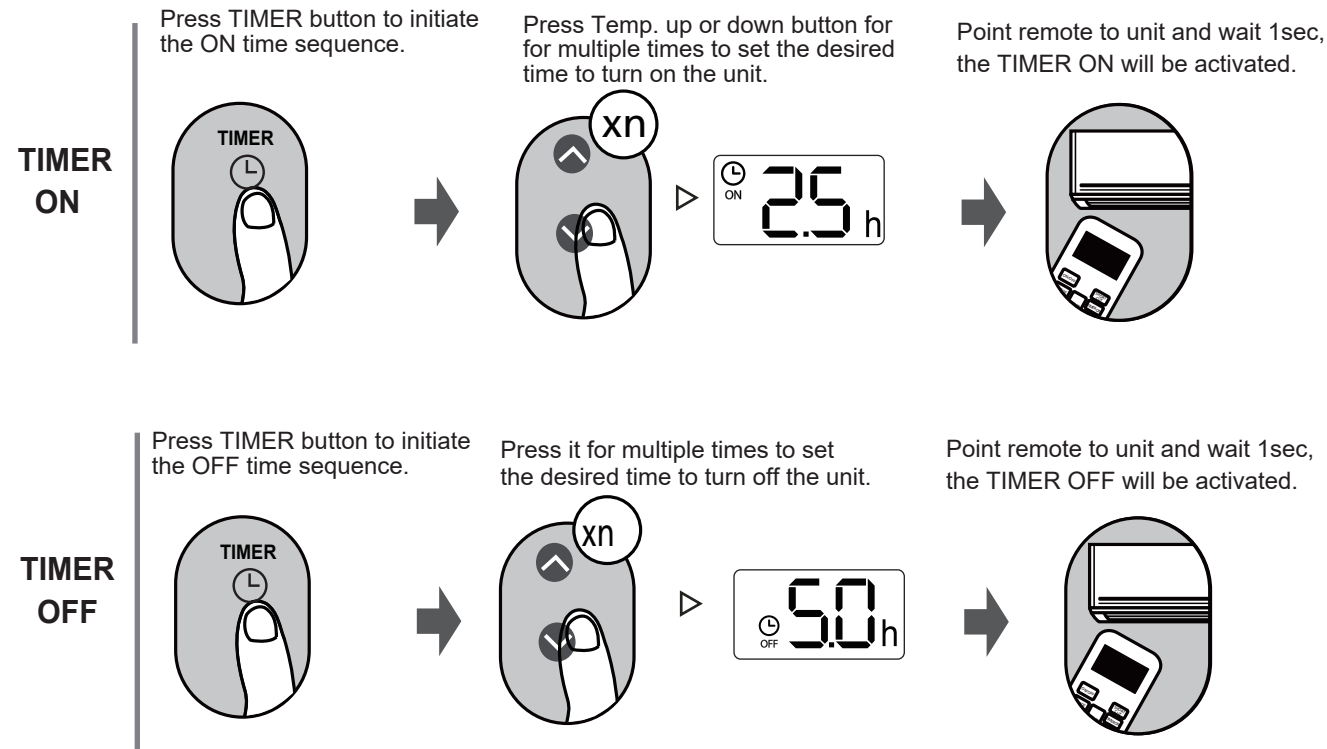
FAN Mode



3. HOW TO USE BASIC FUNCTIONS

3.2 TIMER FUNCTION

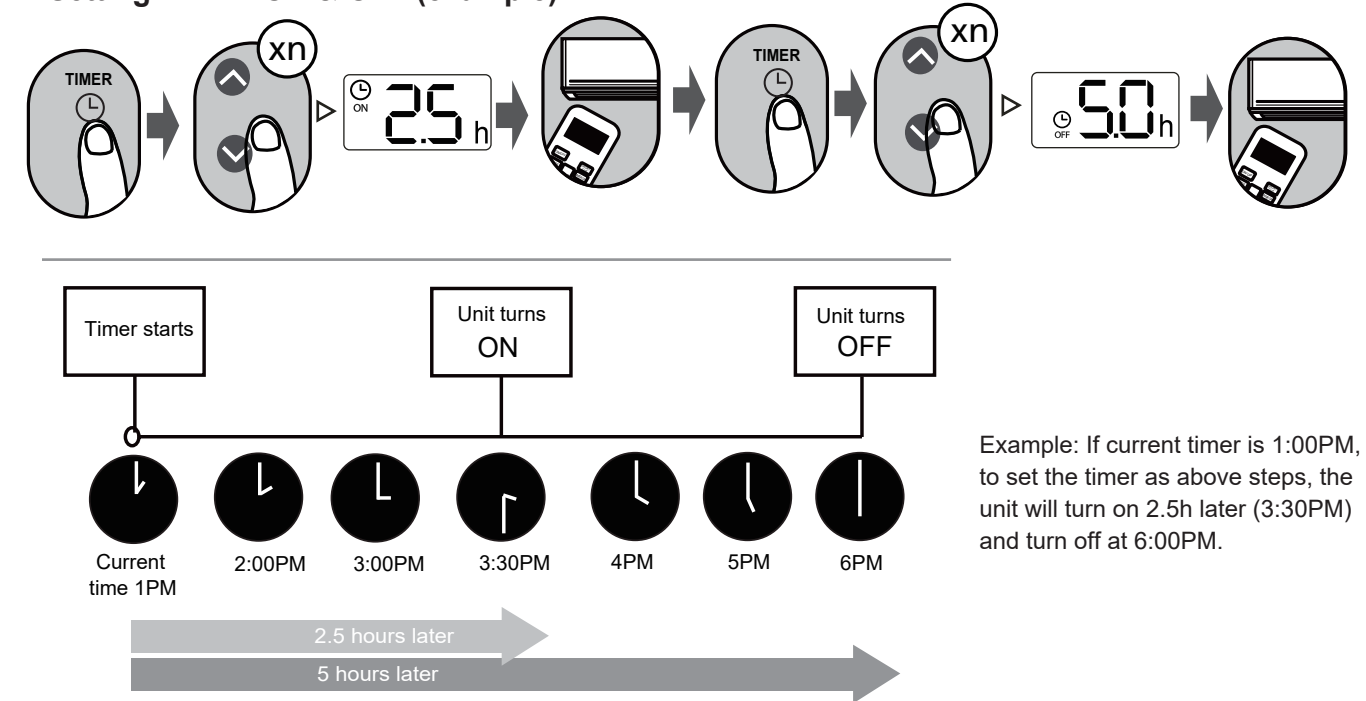
TIMER ON/OFF - Set the amount of time after which the unit will automatically turn on/off.



NOTE:

1. When setting the TIMER ON or TIMER OFF, the time will increase by 30 minutes increments with each press, up to 10 hours. After 10 hours and up to 24, it will increase in 1 hour increments. (For example, press 5 times to get 2.5h, and press 21 times to get 11h,) The timer will revert to 0.0 after 24.
2. Cancel either function by setting its timer to 0.0h.

Setting TIMER ON & OFF (example).

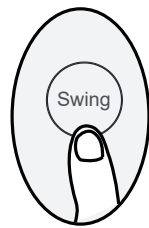


4. HOW TO USE ADVANCED FUNCTIONS

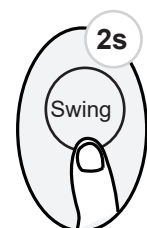
Carrier

Swing

Press Swing button when the unit is turned on.



→ The horizontal louver will swing up and down automatically when pressing Swing button. Press again to make it stop.



→ Keep pressing this button more than 2 seconds, the vertical louver swing function is activated. (Model dependent)

If continue to press the SWING button, five different airflow directions can be set. The louver can be move at a certain range each time you press the button. Press the button until the direction you prefer is reached.

ECO Sleep

Press ECO Sleep button under Auto/Cool/Heat mode



→ The SLEEP function is used to decrease energy use while you sleep (and don't need the same temperature settings to stay comfortable). Please refer to the OWNER'S MANUAL for more details.

This Sleep operation saves energy and improves night time comfort by synchronising with the body's metabolism. The sleep function is not available in Fan or Dry mode.

X-ECO

Press this button under COOL Mode to enter the energy efficient mode.



→ The unit will enter the energy efficient mode.

Note: This function is only available under COOL mode. for heat pump air conditioner only.

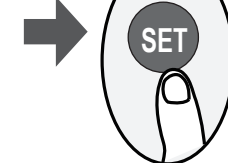
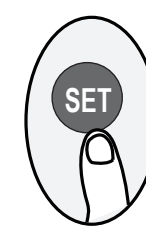
Under cooling mode, press this button, the remote controller will adjust the temperature automatically to 24°C, fan speed of Auto to save energy (only when the set temperature is less than 24°C). If the set temperature is above 24°C, press the X-ECO button, the fan speed will change to Auto, the set temperature will remain unchanged.

Note:

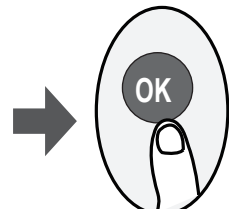
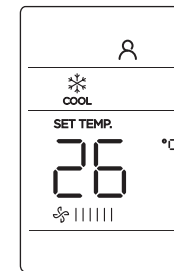
Pressing the X-ECO button, or modifying the mode or adjusting the set temperature to less than 24°C will stop ECO operation.

Under ECO operation, the set temperature should be 24°C or above, it may result in insufficient cooling. If you feel uncomfortable, just press the X-ECO button again to stop it.

SET



or



- Press the SET button to enter the function setting, then press SET button or TEMP \downarrow or TEMP \uparrow button to select the desired function. The selected symbol will flash on the display area, press the OK button to confirm.
- To cancel the selected function, just perform the same procedures as above.
- Press the SET button to scroll through operation functions as follows:
Fresh* (leaf) \rightarrow Sleep* (sleep) \rightarrow Follow Me (person) \rightarrow AP mode* (wifi) \rightarrow Fresh

[*]: Model dependent

NOTE: If your remote controller has Sleep button, you can not use the SET button to select the sleep feature.

FRESH function (leaf) (some units) :

When the FRESH function is initiated, the Ionizer/Plasma Dust Collector (depending on models) is energized and will help to remove pollen and impurities from the air.

Sleep function (sleep) (some units) :

The SLEEP function is used to decrease energy use while you sleep (and don't need the same temperature settings to stay comfortable). This function can only be activated via remote control. For the details, see "Sleep operation" in "USER'S MANUAL".

NOTE: The SLEEP function is not available in FAN and DRY mode.

Follow me function (person) :

The FOLLOW ME function enables the remote control to measure the temperature at its current location and send this signal to the air conditioner every 3 minutes interval. When using AUTO, COOL or HEAT modes, measuring ambient temperature from the remote control (instead of from the indoor unit itself) will enable the air conditioner to optimize the temperature around you and ensure maximum comfort.

NOTE: Press and hold Turbo button for seven seconds to start/stop memory feature of Follow Me function.

- If the memory feature is activated, "On" displays for 3 seconds on the screen.
- If the memory feature is stopped, "OF" displays for 3 seconds on the screen.
- While the memory feature is activated, press the ON/OFF button, shift the mode or power failure will not cancel the Follow me function.

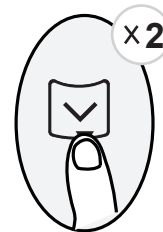
AP function (wifi) (some units) :

Choose AP mode to do wireless network configuration. For some units, it doesn't work by pressing the SET button. To enter the AP mode, continuously press the LED button seven times in 10 seconds.

4. HOW TO USE ADVANCED FUNCTIONS

F.P.

Press this button 2 times during one second under HEAT Mode and setting temperature of 17°C(for models of RG10B2(U)/BGEF and RG10A5(U)/BGEF) or 20°C(for models of RG10B10(U)/BGEF and RG10A11(U)/BGEF).



The unit will operate at high fan speed (while compressor on) with temperature automatically set to 8°C/46°F.

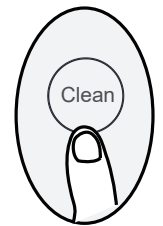
Note: This function is for heat pump air conditioner only.

Press this button 2 times under HEAT Mode and setting temperature of 17°C or 20°C to activate the freeze protection function. It will help to keep the room above 0°C (freezing point) in severe cold winter.

Press On/Off, Sleep, Mode, Fan and Temp. button while operating will cancel this function.

Clean

Press this button to start/stop Self clean or Active clean function(Model dependent).



Self clean function(some units) :

Airborne bacteria can grow in the moisture that condenses around heat exchanger in the unit. With regular use, most of this moisture is evaporated from the unit. Under Self clean operation, the unit will clean itself automatically. After cleaning, the unit will turn off automatically.

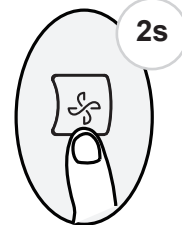
Note: You can only activate this function in COOL or DRY or AUTO COOL(some units) mode.

Active clean function(some units) :

The Active Clean Technology washes away dust, mold, and grease that may cause odors when it adheres to the heat exchanger by automatically freezing and then rapidly thawing the frost. When this function is turned on, the indoor unit display window appears "CL", after 20 to 130 minutes, the unit will turn off automatically and cancel Clean function.

Silence

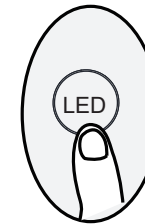
Keep pressing Fan button for more than 2 seconds to activate/disable Silence function.



Due to low frequency operation of compressor, it may result in insufficient cooling and heating capacity. Press ON/OFF, Mode, Sleep button, turn on F.P. or Self clean function while operating will cancel silence function.(Model dependent)

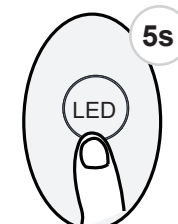
LED

Press LED button



Press this button to turn on and turn off the display on the indoor unit.

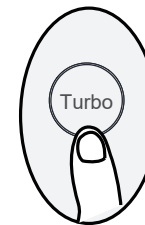
Press this button more than 5 seconds



Keep pressing this button more than 5 seconds, the indoor unit will display the actual room temperature. Press more than 5 seconds again will revert back to display the setting temperature(Model dependent).

Turbo

Press this button

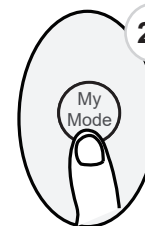


The unit will operate at the biggest capacity output to reach the setting Temp. quickly.

Press this button to activate Turbo feature. It enables the unit to reach the set temperature in the shortest time. Press it again to disable it.(Model dependent)

My Mode

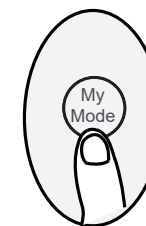
Press this button more than 2 seconds



The unit will memorize the current setting mode, Temp., fan).

My Mode function enable you to memorize or restore your favorite settings (mode, temperature and fan speed).

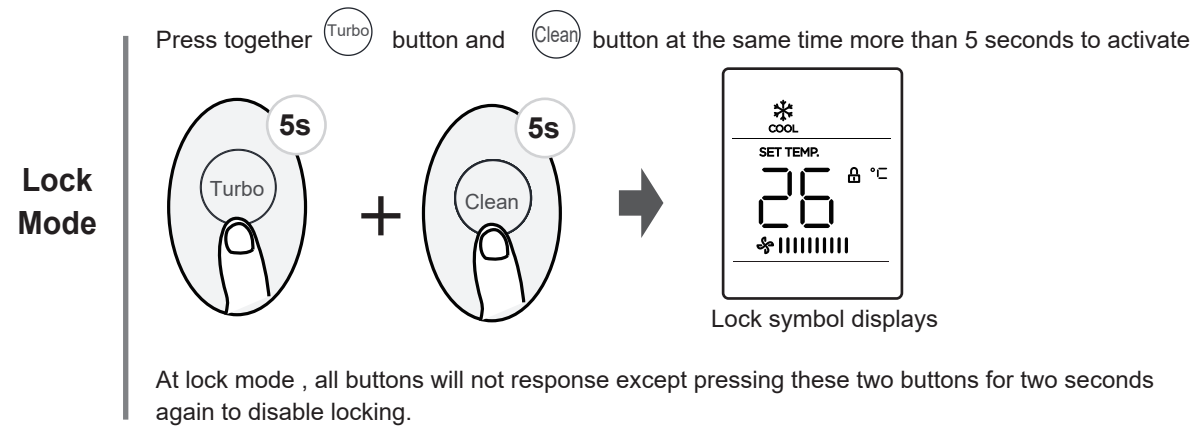
Press this button



The unit will restore to the setting you made last time.

4. HOW TO USE ADVANCED FUNCTIONS

Carrier



NOTES FOR USING REMOTE CONTROL

The device could comply with the local national regulations.

- In Canada, it should comply with CAN ICES-3(B)/NMB-3(B).
- In USA, this device complies with part 15 of the FCC Rules. Operation is subject to the following two conditions:
 - (1) This device may not cause harmful interference, and
 - (2) this device must accept any interference received, including interference that may cause undesired operation.

This equipment has been tested and found to comply with the limits for a Class B digital device, pursuant to part 15 of the FCC Rules. These limits are designed to provide reasonable protection against harmful interference in a residential installation. This equipment generates, uses and can radiate radio frequency energy and, if not installed and used in accordance with the instructions, may cause harmful interference to radio communications. However, there is no guarantee that interference will not occur in a particular installation. If this equipment does cause harmful interference to radio or television reception, which can be determined by turning the equipment off and on, the user is encouraged to try to correct the interference by one or more of the following measures:

- Reorient or relocate the receiving antenna.
- Increase the separation between the equipment and receiver.
- Connect the equipment into an outlet on a circuit different from that to which the receiver is connected.
- Consult the dealer or an experienced radio/TV technician for help.
- Changes or modifications not expressly approved by the party responsible for compliance could void user's authority to operate the equipment.

此页无需印刷

图纸要求:

材质: 双胶纸**80g**

尺寸: **A3**纸对折为**A4**,尺寸: 210*290

封面封底双色套印, 内页黑白。

封面套印开利蓝**pantone 072 (C100, M85, Y0, K0)**

